

Product datasheet for **AB0154-200**

TP53

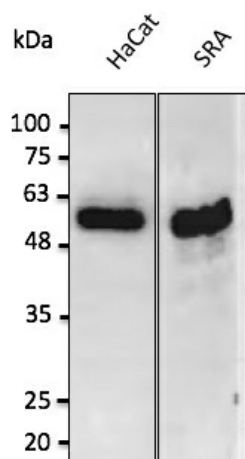
Product data:

| | |
|-----------------------|---|
| Product Type: | Primary Antibodies |
| Applications: | IF, WB |
| Recommended Dilution: | WB 1:500-1:5,000; IF 1:25-1:250 |
| Reactivity: | Canine, Human, Monkey, Mouse, Rat |
| Host: | Goat |
| Isotype: | IgG |
| Clonality: | Polyclonal |
| Immunogen: | Purified recombinant peptide derived from within residues 280 aa to the C-terminus of human P53 produced in E. coli. |
| Formulation: | Polyclonal antibody supplied as a 200 µl (4 mg/ml) aliquot in PBS, 20% glycerol and 0.05% sodium azide. |
| Concentration: | 4mg/ml |
| Purification: | epitope affinity purified |
| Gene Name: | tumor protein p53 |
| Database Link: | NP_001119586 Entrez Gene 22059 MouseEntrez Gene 24842 RatEntrez Gene 716170 MonkeyEntrez Gene 7157 Human |
| Background: | Tumor protein p53 |
| Synonyms: | FLJ92943; LFS1; p53; TRP53 |
| Note: | Detects endogenous levels of P53 by Western blot and in transfected cells with GFP-P53. |
| Protein Families: | Druggable Genome, Stem cell - Pluripotency, Transcription Factors |
| Protein Pathways: | Amyotrophic lateral sclerosis (ALS), Apoptosis, Basal cell carcinoma, Bladder cancer, Cell cycle, Chronic myeloid leukemia, Colorectal cancer, Endometrial cancer, Glioma, Huntington's disease, MAPK signaling pathway, Melanoma, Neurotrophin signaling pathway, Non-small cell lung cancer, p53 signaling pathway, Pancreatic cancer, Pathways in cancer, Prostate cancer, Small cell lung cancer, Thyroid cancer, Wnt signaling pathway |

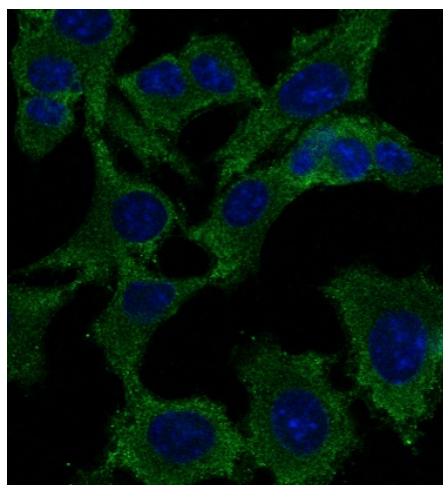


[View online »](#)

Product images:



Anti-P53 Ab at 1:2, 500 dilution; 50 ug of total protein per lane; rabbit polyclonal to goat IgG (HRP) at 1/10,000 dilution;



Immunofluorescence – anti-P53 Ab in Hepa1-6 cells at 1/50 dilution; cells were fixed with methanol;