

Product datasheet for **AB0123-500**

CHM

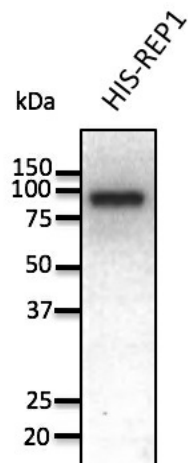
Product data:

Product Type:	Primary Antibodies
Applications:	WB
Recommended Dilution:	WB 1:500-1:2,000
Reactivity:	Canine, Human, Monkey, Mouse, Rat
Host:	Goat
Isotype:	IgG
Clonality:	Polyclonal
Immunogen:	Purified recombinant peptide derived from within residues 617 aa - stop at the C-terminus of human Rep1 produced in E. coli.
Formulation:	Polyclonal antibody supplied as a 500 µl (4 mg/ml) aliquot in PBS, 20% glycerol and 0.05% sodium azide.
Concentration:	4mg/ml
Purification:	epitope affinity purified
Gene Name:	CHM, Rab escort protein 1
Database Link:	NP_001138886 Entrez Gene 12662 MouseEntrez Gene 24942 RatEntrez Gene 1121 Human
Background:	Choroideremia (Rab escort protein 1)
Synonyms:	choroideremia; DXS540; FLJ38564; GGTA; HSD-32; MGC102710; REP-1; REP1; TCD
Note:	Detects endogenous Rep1 and in transfected cells by Western blot.
Protein Families:	Druggable Genome



[View online »](#)

Product images:



Anti-REP1 Ab at 1/1,000 dilution; 50 ng of recombinant protein per lane; rabbit polyclonal to goat IgG (HRP) at 1/10,000 dilution.