

## Product datasheet for **AB0106-100**

### EGFR

#### Product data:

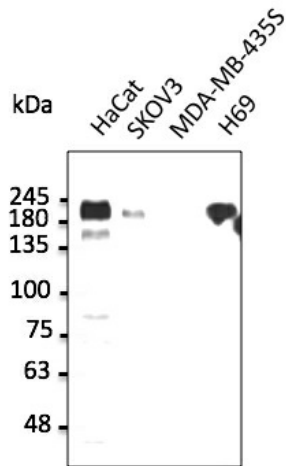
Product Type:	Primary Antibodies
Applications:	WB
Recommended Dilution:	WB 1:500-1:5,000
Reactivity:	Canine, Human, Monkey, Mouse, Rat
Host:	Goat
Isotype:	IgG
Clonality:	Polyclonal
Immunogen:	Purified recombinant peptide derived from within residues 1,162 aa to the C-terminus of human ERBB1 produced in E. coli.
Formulation:	Polyclonal antibody supplied as a 100 µl (3 mg/ml) aliquot in PBS, 20% glycerol and 0.05% sodium azide.
Concentration:	3mg/ml
Purification:	epitope affinity purified
Gene Name:	epidermal growth factor receptor
Database Link:	<a href="#">NP_005219 Entrez Gene 13649 Mouse</a> <a href="#">Entrez Gene 24329 Rat</a> <a href="#">Entrez Gene 613027 Monkey</a> <a href="#">Entrez Gene 1956 Human</a>
Background:	Epidermal growth factor receptor
Synonyms:	ERBB; ERBB1; HER1; mENA; PIG61
Note:	This antibody gives a positive signal in the following human (HaCat, SKOV3 and H69) whole cell lysates by Western blot.
Protein Families:	Adult stem cells, Cancer stem cells, Druggable Genome, ES Cell Differentiation/IPS, Protein Kinase, Secreted Protein, Stem cell relevant signaling - JAK/STAT signaling pathway, Transmembrane



[View online »](#)

**Protein Pathways:**

Adherens junction, Bladder cancer, Calcium signaling pathway, Colorectal cancer, Cytokine-cytokine receptor interaction, Dorso-ventral axis formation, Endocytosis, Endometrial cancer, Epithelial cell signaling in Helicobacter pylori infection, ErbB signaling pathway, Focal adhesion, Gap junction, Glioma, GnRH signaling pathway, MAPK signaling pathway, Melanoma, Non-small cell lung cancer, Pancreatic cancer, Pathways in cancer, Prostate cancer, Regulation of actin cytoskeleton

**Product images:**

Anti-ERBB1 Ab at 1:2, 500 dilution; 50 ug of total protein per lane; rabbit polyclonal to goat IgG (HRP) at 1/10,000 dilution;