

## Product datasheet for **AB0093-100**

### LMNA

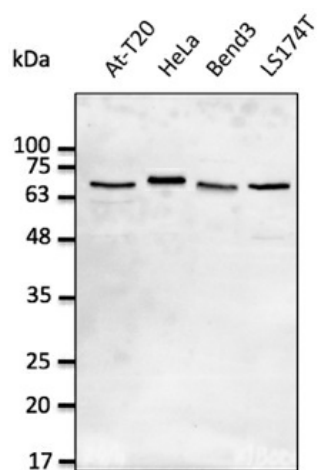
#### Product data:

Product Type:	Primary Antibodies
Applications:	WB
Recommended Dilution:	WB 1:500-1:5,000
Reactivity:	Canine, Human, Monkey, Mouse, Rat
Host:	Goat
Isotype:	IgG
Clonality:	Polyclonal
Immunogen:	Purified recombinant peptide within residues 620 aa to C-term of human LMNA produced in E. coli.
Formulation:	Polyclonal antibody supplied as a 100 µl (3 mg/ml) aliquot in PBS, 20% glycerol and 0.05% sodium azide.
Concentration:	3mg/ml
Purification:	epitope affinity purified
Gene Name:	lamin A/C
Database Link:	<a href="#">NP_005563</a> Entrez Gene 16905 Mouse <a href="#">Entrez Gene 60374</a> Rat <a href="#">Entrez Gene 4000</a> Human
Background:	Lamin A/C
Synonyms:	CDCD1; CDDC; CMD1A; CMT2B1; EMD2; FPL; FPLD; HGPS; IDC; LDP1; LFP; LGMD1B; LMN1; LMNC; OTTHUMP00000015843; PRO1
Note:	Detects a band of 65-70 kDa by Western blot in whole cell lysates.
Protein Families:	Druggable Genome
Protein Pathways:	Arrhythmogenic right ventricular cardiomyopathy (ARVC), Dilated cardiomyopathy, Hypertrophic cardiomyopathy (HCM)



[View online »](#)

## Product images:



Anti-LMNA Ab at 1/2, 500 dilution; lysates at 50 ug per lane; rabbit polyclonal to goat IgG (HRP) at 1/10,000 dilution;