

Product datasheet for **AB0088-200**

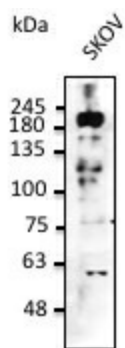
ERBB2

Product data:

Product Type:	Primary Antibodies
Applications:	WB
Recommended Dilution:	WB 1:500-1:5,000
Reactivity:	Canine, Human, Monkey, Mouse, Rat
Host:	Goat
Isotype:	IgG
Clonality:	Polyclonal
Immunogen:	Purified recombinant peptide derived from within residues 1,177 aa to the C-terminus of human ERBB2 produced in E. coli.
Formulation:	Polyclonal antibody supplied as a 200 µl (3 mg/ml) aliquot in PBS, 20% glycerol and 0.05% sodium azide.
Concentration:	3mg/ml
Purification:	epitope affinity purified
Gene Name:	erb-b2 receptor tyrosine kinase 2
Database Link:	NP_001005862 Entrez Gene 13866 Mouse Entrez Gene 24337 Rat Entrez Gene 697573 Monkey Entrez Gene 2064 Human
Background:	Erb-b2 receptor tyrosine kinase
Synonyms:	C-erbB-2; CD340; erbB-2; HER-2; HER-2/neu; HER2; herstatin; NEU; NGL; p185erbB2; TKR1
Note:	Detects endogenous levels of ERBB2 by Western blot.
Protein Families:	Druggable Genome, Protein Kinase, Transmembrane
Protein Pathways:	Adherens junction, Bladder cancer, Calcium signaling pathway, Endometrial cancer, ErbB signaling pathway, Focal adhesion, Non-small cell lung cancer, Pancreatic cancer, Pathways in cancer, Prostate cancer



[View online »](#)

Product images:

Anti-ERBB2 Ab at 1:2,500 dilution;
50 µg of total protein per lane;
rabbit polyclonal to goat IgG (HRP) at
1/10,000 dilution;

Anti-ERBB2 Ab at 1:2,500 dilution; 50 µg of total
protein per lane; rabbit polyclonal to goat IgG
(HRP) at 1/10,000 dilution;