

## Product datasheet for **AB0018-100**

### **RAB1B**

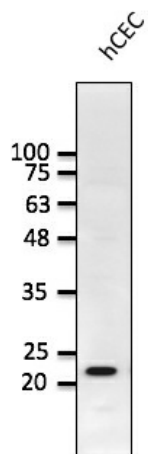
#### **Product data:**

<b>Product Type:</b>	Primary Antibodies
<b>Applications:</b>	WB
<b>Recommended Dilution:</b>	WB 1:250-1:5,000
<b>Reactivity:</b>	Canine, Human, Monkey, Mouse, Rat
<b>Host:</b>	Goat
<b>Isotype:</b>	IgG
<b>Clonality:</b>	Polyclonal
<b>Immunogen:</b>	Purified recombinant peptide derived from within residues 110 aa to the C-terminus of Rab1b produced in E. coli.
<b>Formulation:</b>	Polyclonal antibody supplied as a 100 µl (3 mg/ml) aliquot in PBS, 20% glycerol and 0.05% sodium azide.
<b>Concentration:</b>	3mg/ml
<b>Purification:</b>	epitope affinity purified
<b>Gene Name:</b>	RAB1B, member RAS oncogene family
<b>Database Link:</b>	<a href="#">NP_112243</a> <a href="#">Entrez Gene 81876</a> Human
<b>Background:</b>	RAB1, member RAS oncogene family
<b>Synonyms:</b>	RAB1B
<b>Note:</b>	Detects endogenous levels of Rab1b protein by Western blot in whole cell lysates and transfected cells with GFP-Rab1b cds.
<b>Protein Families:</b>	Transcription Factors



[View online »](#)

## Product images:



Anti-Rab1b Ab at 1/1,000 dilution; lysates at 50 ug per lane; rabbit polyclonal to goat IgG (HRP) at 1/10,000 dilution;