

## Product datasheet for 75-142

### ATP7A Mouse Monoclonal Antibody [Clone ID: L60/4]

#### Product data:

Product Type:	Primary Antibodies
Clone Name:	L60/4
Applications:	IHC, IP, WB
Recommend Dilution:	<b>Immunoblot (IB).</b> <b>Immunohistochemistry (IHC).</b> <b>Immunoprecipitation (IP).</b>
Reactivity:	Human, Mouse, Rat
Host:	Mouse
Isotype:	IgG2b
Clonality:	Monoclonal
Immunogen:	Synthetic peptide amino acids 42-61 (cytoplasmic N- terminus) of human Copper-transporting ATPase 1 (Copper pump 1) (Menkes disease-associated protein) (accession number Q04656). Rat: 85% identity (17/20 amino acids). Mouse=95% identity (19/20 amino acids).
Formulation:	State: Purified
Gene Name:	ATPase copper transporting alpha
Database Link:	<a href="#">Entrez Gene 538 Human</a>
Synonyms:	Copper pump 1, MC1, MNK
Note:	USERS will cite the UC Davis/NIH NeuroMab Facility in any publication(s) describing the research utilizing the MATERIALS. The suggested acknowledgment statement is as follows: "The monoclonal antibody _ was developed by and/or obtained from the UC Davis/NIH NeuroMab Facility, supported by NIH grant U24NS050606 and maintained by the Department of Neurobiology, Physiology and Behavior, College of Biological Sciences, University of California, Davis, CA 95616." Also, please include the complete clone number (e.g., N52A/42) and the Antibody Registry identification number (e.g., RRID:AB_2120479) to avoid ambiguity. <a href="#">View Research License Agreement</a>

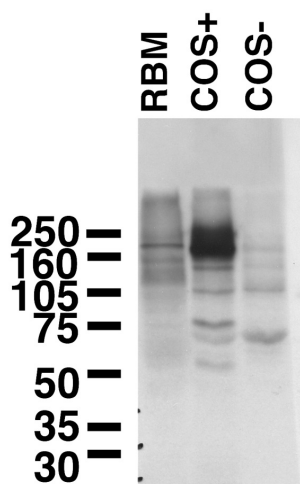


[View online »](#)

## Product images:



Adult rat hippocampus immunohistochemistry with L60/4 TC supe.



Immunoblot versus rat brain membranes (RBM), and lysates of COS-1 cells transfected with human Copper-transporting ATPase 1 (COS+) or empty vector (COS-) and probed with L60/4 TC supe.