

Product datasheet for 75-069

KIR2.3 (KCNJ4) Mouse Monoclonal Antibody [Clone ID: N25/35]

Product data:

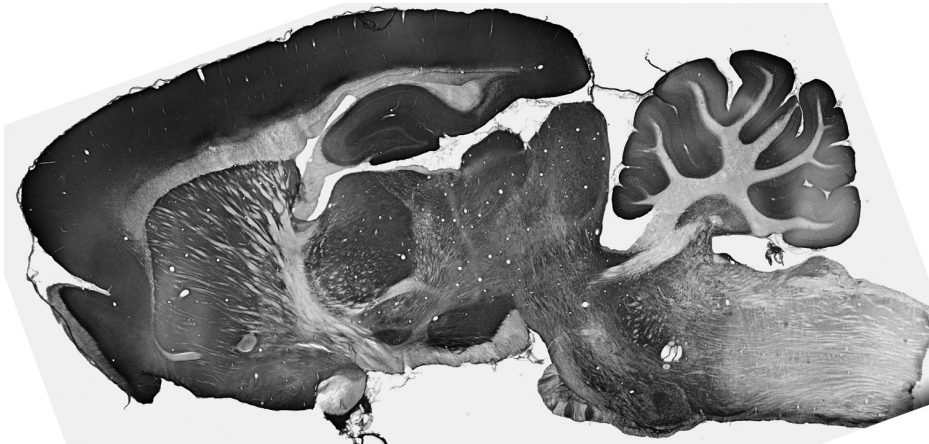
Product Type:	Primary Antibodies
Clone Name:	N25/35
Applications:	IF, IHC, WB
Recommend Dilution:	Immunoblot (IB). Immunocytochemistry (ICC). Immunohistochemistry (IHC)
Reactivity:	Human, Mouse, Rat
Host:	Mouse
Isotype:	IgG1
Clonality:	Monoclonal
Immunogen:	Fusion protein amino acids 390-445 (cytoplasmic C-terminus, EAAAAAAVAAGLGLGSEAGSKEEAGIIRMLEFGSHLDLERMQASLPLDNISYRRESAI) of human Kir2.3 (also known as Inward rectifier potassium channel subfamily J member 4, KCNJ4, Brain inwardly rectifying K(+) channel 2, Hippocampal inward rectifier, HIRK2, HRK1, HIR, IRK3 and BIR11, accession number P48050). Mouse: 94% identity (54/57 amino acids identical) Rat: 94% identity (54/57 amino acids identical) <50% identity with Kir2.1 and Kir2.2
Specificity:	Does not cross-react with Kir2.1 or Kir2.2
Formulation:	State: Purified
Gene Name:	potassium voltage-gated channel subfamily J member 4
Database Link:	Entrez Gene 3761 Human
Synonyms:	KCNJ4, Inward rectifier K(+) channel Kir2.3, Hippocampal inward rectifier, HIRK2, HRK1, HIR, Inward rectifier potassium channel 4



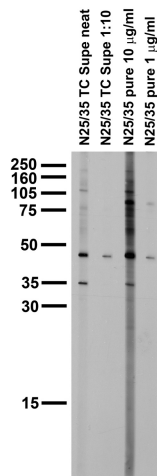
[View online »](#)

Note: USERS will cite the UC Davis/NIH NeuroMab Facility in any publication(s) describing the research utilizing the MATERIALS. The suggested acknowledgment statement is as follows: "The monoclonal antibody _ was developed by and/or obtained from the UC Davis/NIH NeuroMab Facility, supported by NIH grant U24NS050606 and maintained by the Department of Neurobiology, Physiology and Behavior, College of Biological Sciences, University of California, Davis, CA 95616." Also, please include the complete clone number (e.g., N52A/42) and the Antibody Registry identification number (e.g., RRID:AB_2120479) to avoid ambiguity. [View Research License Agreement](#)

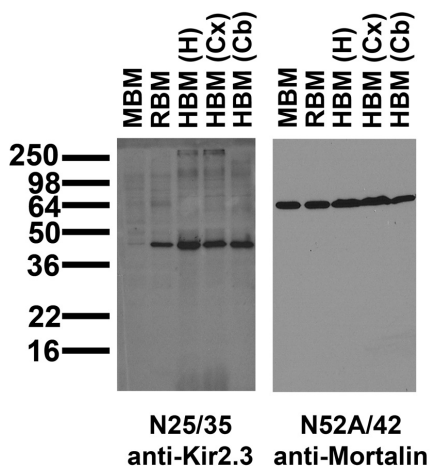
Product images:



Adult rat brain immunohistochemistry



Adult rat brain membrane immunoblot



Immunoblot against crude membrane fractions from whole mouse (MBM) or rat (RBM) brain and from human hippocampus [HBM(H)], cerebral cortex [HBM(Cx)] or cerebellum [HBM(Cb)] and probed with N25/35 (left) or N52A/42 (right) TC supe