

Product datasheet for 75-019

Kv beta 1 (KCNA1) Mouse Monoclonal Antibody [Clone ID: K47/42]

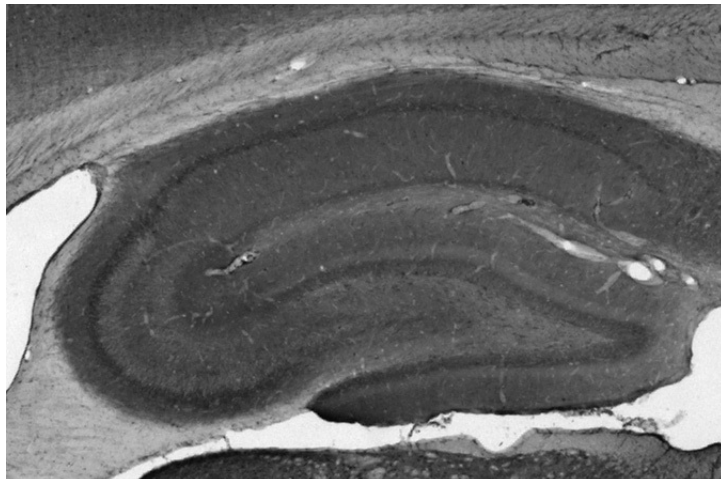
Product data:

Product Type:	Primary Antibodies
Clone Name:	K47/42
Applications:	IF, IHC, IP, WB
Recommend Dilution:	Immunoblot (IB). Immunohistochemistry (IHC). Immunocytochemistry (ICC). Immunoprecipitation (IP).
Reactivity:	Human, Mouse, Rat
Host:	Mouse
Isotype:	IgG1
Clonality:	Monoclonal
Immunogen:	Synthetic peptide amino acids 9-28 (ADIPSPKLGLPKSSESALKC, unique Nterminus) of human Kv β 1.2 (accession number NP_003462). Rat: 100% identity (20/20 amino acids identical)
Formulation:	State: Purified
Gene Name:	Homo sapiens potassium voltage-gated channel subfamily A member regulatory beta subunit 1 (KCNA1), transcript variant 2
Database Link:	Entrez Gene 16497 Mouse Entrez Gene 29737 Rat Entrez Gene 7881 Human
Synonyms:	Voltage-gated potassium channel subunit beta-1, KCNA1B, Kv-beta-1
Note:	USERS will cite the UC Davis/NIH NeuroMab Facility in any publication(s) describing the research utilizing the MATERIALS. The suggested acknowledgment statement is as follows: "The monoclonal antibody _ was developed by and/or obtained from the UC Davis/NIH NeuroMab Facility, supported by NIH grant U24NS050606 and maintained by the Department of Neurobiology, Physiology and Behavior, College of Biological Sciences, University of California, Davis, CA 95616." Also, please include the complete clone number (e.g., N52A/42) and the Antibody Registry identification number (e.g., RRID:AB_2120479) to avoid ambiguity. View Research License Agreement
Protein Families:	Druggable Genome, Ion Channels: Other

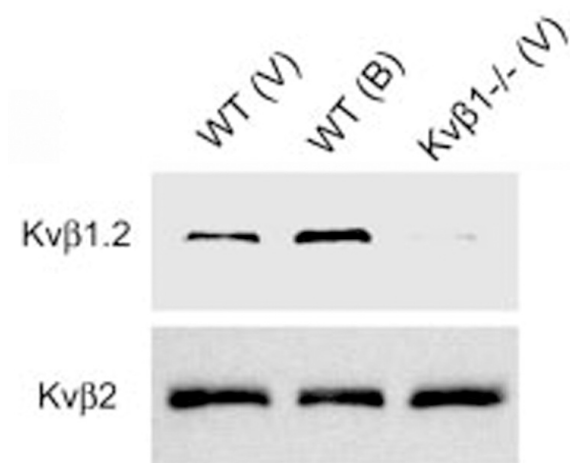


[View online »](#)

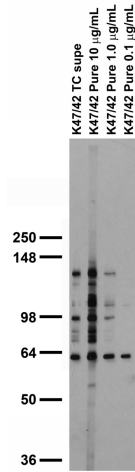
Product images:



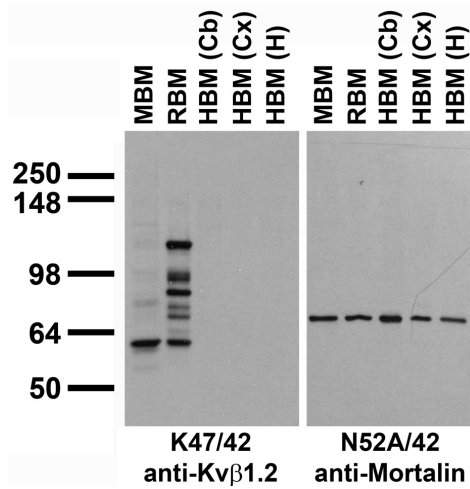
adult rat hippocampus immunohistochemistry



immunoblot of crude membrane fractions from adult heart ventricle (V) and brain (B) from wild-type (WT) and Kvβ1 knockout (Kvβ1) mice probed with K47/42 (Kv1.2, top) and K17/70 (Kvβ2, bottom). Data courtesy of Jeanne Nerbonne, Washington University SOM. Reproduced with permission from 2005 Aimond et al Circ Res.



adult rat brain membrane immunoblot



immunoblot against crude membrane fractions from whole mouse (MBM) or rat (RBM) brain and from human cerebellum [HBM(Cb)], cerebral cortex [HBM(Cx)] or hippocampus [HBM(H)] and probed with K37/89 (left) or N52A/42 (right) TC supe.