

Product datasheet for 73-394

Kcnj8 Mouse Monoclonal Antibody [Clone ID: N366/60]

Product data:

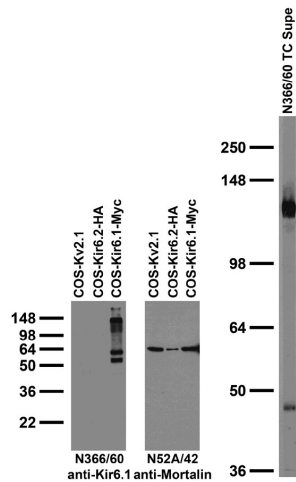
Product Type:	Primary Antibodies
Clone Name:	N366/60
Applications:	IF, IHC, WB
Recommend Dilution:	Immunoblot (IB). Immunocytochemistry (ICC). Immunohistochemistry (IHC).
Reactivity:	Mouse, Rat
Host:	Mouse
Isotype:	IgG2a
Clonality:	Monoclonal
Immunogen:	Fusion protein amino acids 306-424 (cytoplasmic C-terminus) of rat Kir6.1 (also known as ATP-sensitive inward rectifier potassium channel 8, Potassium channel inwardly rectifying subfamily J member 8, uKATP-1 and Kcnj8, accession number Q63664). Mouse: 99% identity (118/119 amino acids identical). Human: 96% identity (115/119 amino acids identical). <50% identity with Kir6.2.
Specificity:	Does not cross-react with Kir6.2
Formulation:	State: Supernatant
Gene Name:	potassium voltage-gated channel subfamily J member 8
Database Link:	Entrez Gene 25472 Rat
Synonyms:	Kir6.1, uKATP-1



[View online »](#)

Note: USERS will cite the UC Davis/NIH NeuroMab Facility in any publication(s) describing the research utilizing the MATERIALS. The suggested acknowledgment statement is as follows: "The monoclonal antibody _ was developed by and/or obtained from the UC Davis/NIH NeuroMab Facility, supported by NIH grant U24NS050606 and maintained by the Department of Neurobiology, Physiology and Behavior, College of Biological Sciences, University of California, Davis, CA 95616." Also, please include the complete clone number (e.g., N52A/42) and the Antibody Registry identification number (e.g., RRID:AB_2120479) to avoid ambiguity. [View Research License Agreement](#)

Product images:



Left: immunoblot against extracts of COS cells transiently transfected with Myc-tagged Kir6.1, HA-tagged Kir6.2 or untagged Kv2.1 plasmid probed with N366/60 (left) or N52A/42 (right) TC supe.
Right: adult rat brain membrane immunoblot