

## Product datasheet for 73-345

### ATF 4 (ATF4) Mouse Monoclonal Antibody [Clone ID: N360A/24]

#### Product data:

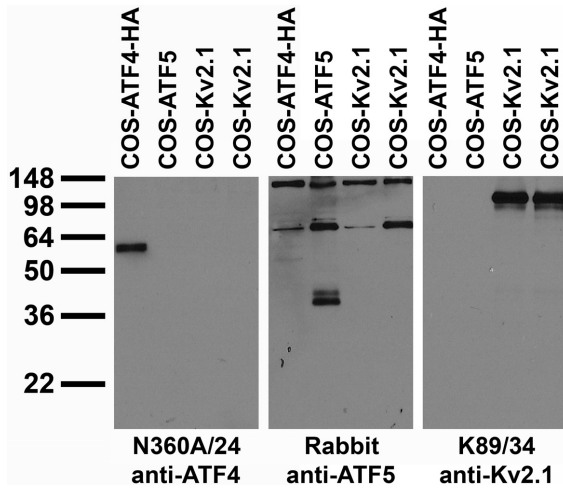
Product Type:	Primary Antibodies
Clone Name:	N360A/24
Applications:	IF, IHC, WB
Recommend Dilution:	Immunoblot (IB) Immunohistochemistry (IHC) Immunocytochemistry (ICC)
Reactivity:	Human, Rat
Host:	Mouse
Isotype:	IgG2a
Clonality:	Monoclonal
Immunogen:	Fusion protein amino acids 25-327 (nearly full-length, all but first 24 amino acids) of human ATF4 (also known as Activating transcription factor 4, Cyclic AMP-dependent transcription factor, Cyclic AMP-responsive element-binding protein 2, CREB-2, C/EBP-related ATF, C/ATF, Taxresponsive enhancer element-binding protein 67, DNA-binding protein TAXREB67 and TXREB, accession number P18848). Rat: 86% identity (284/327 amino acids identical) Mouse: 85% identity (280/328 amino acids identical) <50% identity with ATF5
Specificity:	Does not cross-react with ATF5
Formulation:	State: Supernatant
Gene Name:	activating transcription factor 4
Database Link:	<a href="#">Entrez Gene 468 Human</a>
Synonyms:	CREB2, CREB-2, TXREB, Activating transcription factor 4, ATF-4



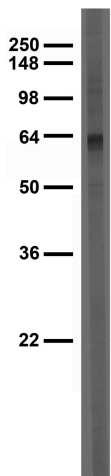
[View online »](#)

**Note:** USERS will cite the UC Davis/NIH NeuroMab Facility in any publication(s) describing the research utilizing the MATERIALS. The suggested acknowledgment statement is as follows: "The monoclonal antibody \_ was developed by and/or obtained from the UC Davis/NIH NeuroMab Facility, supported by NIH grant U24NS050606 and maintained by the Department of Neurobiology, Physiology and Behavior, College of Biological Sciences, University of California, Davis, CA 95616." Also, please include the complete clone number (e.g., N52A/42) and the Antibody Registry identification number (e.g., RRID:AB\_2120479) to avoid ambiguity. [View Research License Agreement](#)

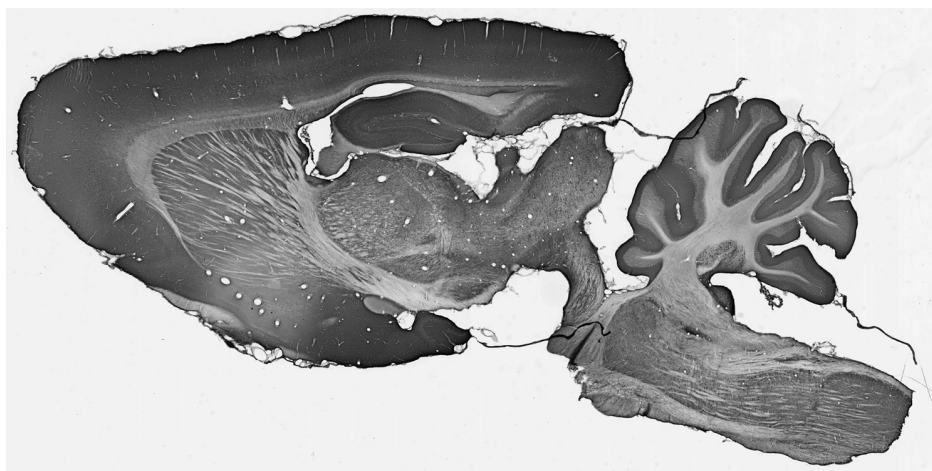
**Product images:**



Transfected cell immunoblot: extracts of COS cells transiently transfected with HA-tagged ATF4 or untagged ATF5 or Kv2.1 plasmid and probed with N360A/24 TC supe (left), Rabbit anti-ATF5 (middle) or K89/34 TC supe (right).



Adult rat brain low-speed pellet immunoblot



Adult rat brain immunohistochemistry