

## Product datasheet for 73-330

### BAF53A (ACTL6A) Mouse Monoclonal Antibody [Clone ID: N336B/83]

#### Product data:

**Product Type:** Primary Antibodies

**Clone Name:** N336B/83

**Applications:** IF, WB

**Recommend** Immunoblot (IB)

**Dilution:** Immunocytochemistry (ICC)

**Reactivity:** Human, Mouse, Rat

**Host:** Mouse

**Isotype:** IgG2b

**Clonality:** Monoclonal

**Immunogen:** Fusion protein amino acids 43-119 (MVVERDDGSTLMEIDGDKGKQGGPTYIIDTNRVLPRENMEAISPLKNGMVEDWDSFQAILDHTYKMHVKSEASLHP, actin subdomain 2) of human BAF53a (also known as 53 kDa BRG1-associated factor A, BRG1-associated factor 53A, Actin-like protein 6A, ArpNbeta, ACTL6A, INO80 complex subunit K and INO80K, accession number O96019).  
Mouse: 96% identity (74/77 amino acids identical)  
Rat: 94% identity (73/77 amino acids identical)  
>50% identity with BAF53a

**Specificity:** Does not cross-react with BAF53b

**Formulation:** State: Supernatant

**Gene Name:** actin like 6A

**Database** [Entrez Gene 86 Human](#)

**Link:**

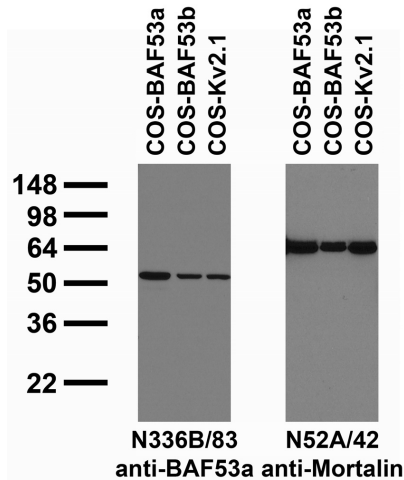
**Synonyms:** BAF53A, INO80K



[View online »](#)

**Note:** USERS will cite the UC Davis/NIH NeuroMab Facility in any publication(s) describing the research utilizing the MATERIALS. The suggested acknowledgment statement is as follows:  
 "The monoclonal antibody \_ was developed by and/or obtained from the UC Davis/NIH NeuroMab Facility, supported by NIH grant U24NS050606 and maintained by the Department of Neurobiology, Physiology and Behavior, College of Biological Sciences, University of California, Davis, CA 95616."  
 Also, please include the complete clone number (e.g., N52A/42) and the Antibody Registry identification number (e.g., RRID:AB\_2120479) to avoid ambiguity.  
[View Research License Agreement](#)

**Product images:**



Transfected cell immunoblot: extracts of COS cells transiently transfected with untagged BAF53a, BAF53b or Kv2.1 plasmids and probed with N336B/83 (left) or N52A/42 (right) TC supe. Note that BAF53a is ubiquitously expressed in many different cell types, including COS cells.