

## Product datasheet for 73-129

### Mesd Mouse Monoclonal Antibody [Clone ID: N88/12]

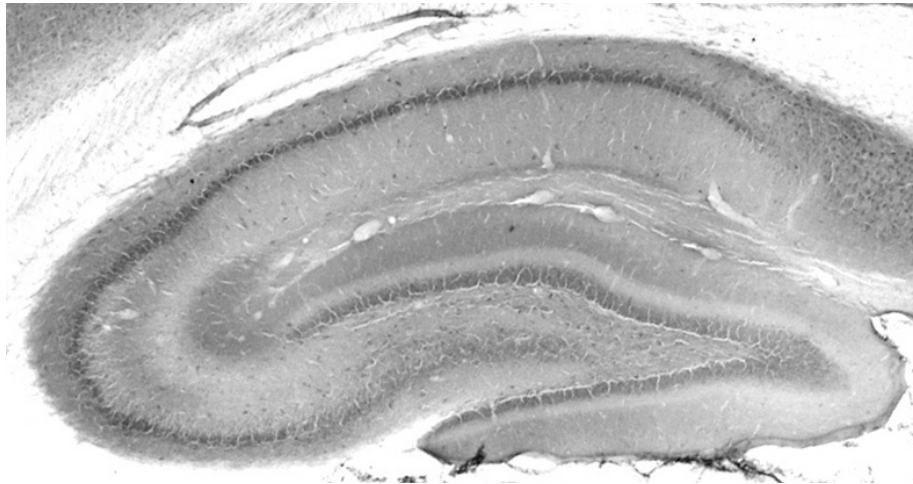
#### Product data:

Product Type:	Primary Antibodies
Clone Name:	N88/12
Applications:	IHC, IP, WB
Recommend Dilution:	Immunoblot (IB) Immunohistochemistry (IHC) Immunoprecipitation (IP)
Reactivity:	Human, Mouse, Rat
Host:	Mouse
Isotype:	IgG2b
Clonality:	Monoclonal
Immunogen:	Fusion protein amino acids 30-95 and 118-180 (lacking VSD domain) of mouse MESD (also known as mesoderm development candidate 2, MESD2, MESDC2 and renal carcinoma antigen NY-REN-61, accession number Q9ERE7). Rat: 88% identity (133/150 amino acids identical). Human: 84% identity (127/150 amino acids identical).
Formulation:	State: Supernatant
Gene Name:	mesoderm development candidate 2
Database Link:	<a href="#">Entrez Gene 67943 Mouse</a>
Synonyms:	Mesoderm development candidate 2, MESDC2, KIAA0081, UNQ1911/PRO4369
Note:	USERS will cite the UC Davis/NIH NeuroMab Facility in any publication(s) describing the research utilizing the MATERIALS. The suggested acknowledgment statement is as follows: "The monoclonal antibody _ was developed by and/or obtained from the UC Davis/NIH NeuroMab Facility, supported by NIH grant U24NS050606 and maintained by the Department of Neurobiology, Physiology and Behavior, College of Biological Sciences, University of California, Davis, CA 95616." Also, please include the complete clone number (e.g., N52A/42) and the Antibody Registry identification number (e.g., RRID:AB_2120479) to avoid ambiguity. <a href="#">View Research License Agreement</a>

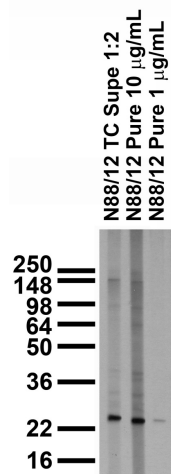


[View online »](#)

Product images:



Adult rat hippocampus immunohistochemistry



Adult rat brain membrane immunoblot