

## Product datasheet for 73-078

### DLX1 Mouse Monoclonal Antibody [Clone ID: L43/40]

#### Product data:

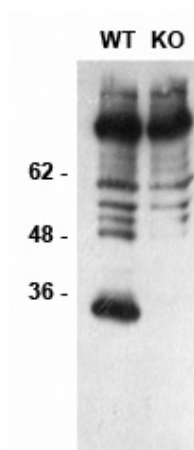
Product Type:	Primary Antibodies
Clone Name:	L43/40
Applications:	IHC, IP, WB
Recommend Dilution:	Immunoblot (IB) Immunohistochemistry (IHC) Immunoprecipitation (IP)
Reactivity:	Human, Mouse, Rat
Host:	Mouse
Isotype:	IgG2a
Clonality:	Monoclonal
Immunogen:	Synthetic peptide amino acids 53-74 (PDGAYSSASSFSRPLGYPVNS) of human DLX1 also known as distal-less homeobox protein 1, accession number P56177). Rat: 100% identity (22/22 amino acids identical). Mouse: 100% identity (22/22 amino acids identical).
Formulation:	State: Supernatant
Gene Name:	distal-less homeobox 1
Database Link:	<a href="#">Entrez Gene 1745 Human</a>
Synonyms:	DLX-1, Homeobox protein DLX-1
Note:	USERS will cite the UC Davis/NIH NeuroMab Facility in any publication(s) describing the research utilizing the MATERIALS. The suggested acknowledgment statement is as follows: "The monoclonal antibody _ was developed by and/or obtained from the UC Davis/NIH NeuroMab Facility, supported by NIH grant U24NS050606 and maintained by the Department of Neurobiology, Physiology and Behavior, College of Biological Sciences, University of California, Davis, CA 95616." Also, please include the complete clone number (e.g., N52A/42) and the Antibody Registry identification number (e.g., RRID:AB_2120479) to avoid ambiguity. <a href="#">View Research License Agreement</a>



[View online »](#)

**Product images:**

Adult rat hippocampus immunohistochemistry



Immunoblot versus whole cell extracts from embryonic day 15 telencephalon from DLX1/2 wild-type (WT) and knockout (KO) mice. Data courtesy of Dr. Mario Hernan and Dr. John Rubenstein, UCSF.