

Product datasheet for 73-075

Caspr2 (CNTNAP2) Mouse Monoclonal Antibody [Clone ID: K67/25]

Product data:

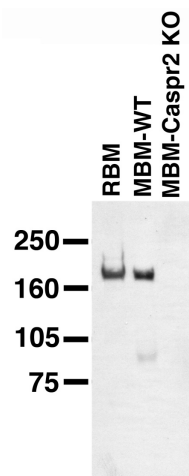
Product Type:	Primary Antibodies
Clone Name:	K67/25
Applications:	IHC, IP, WB
Recommend Dilution:	Immunoblot (IB). Immunohistochemistry (IHC). Immunoprecipitation (IP).
Reactivity:	Human, Mouse, Rat
Host:	Mouse
Isotype:	IgG2a
Clonality:	Monoclonal
Immunogen:	Fusion protein 96-1265 (extracellular domain) of human Caspr2 (accession number NP_054860). Mouse=94% identity (1105/1171 amino acids identical) Binding site mapped to within a.a. 1124-1265; 97% identical in mouse (138/142 a.a. identical).
Specificity:	No cross-reactivity against Caspr/paranodin.
Formulation:	State: Supernatant
Gene Name:	Homo sapiens contactin associated protein-like 2 (CNTNAP2)
Database Link:	Entrez Gene 66797 Mouse Entrez Gene 500105 Rat Entrez Gene 26047 Human
Synonyms:	Contactin-associated protein-like 2, CASPR2, KIAA0868
Note:	USERS will cite the UC Davis/NIH NeuroMab Facility in any publication(s) describing the research utilizing the MATERIALS. The suggested acknowledgment statement is as follows: "The monoclonal antibody _ was developed by and/or obtained from the UC Davis/NIH NeuroMab Facility, supported by NIH grant U24NS050606 and maintained by the Department of Neurobiology, Physiology and Behavior, College of Biological Sciences, University of California, Davis, CA 95616." Also, please include the complete clone number (e.g., N52A/42) and the Antibody Registry identification number (e.g., RRID:AB_2120479) to avoid ambiguity. View Research License Agreement
Protein Families:	Druggable Genome, Transmembrane



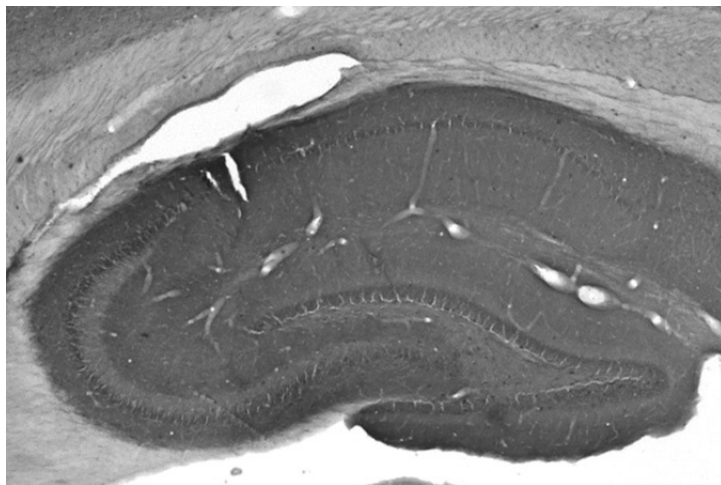
[View online »](#)

Protein Pathways: Cell adhesion molecules (CAMs)

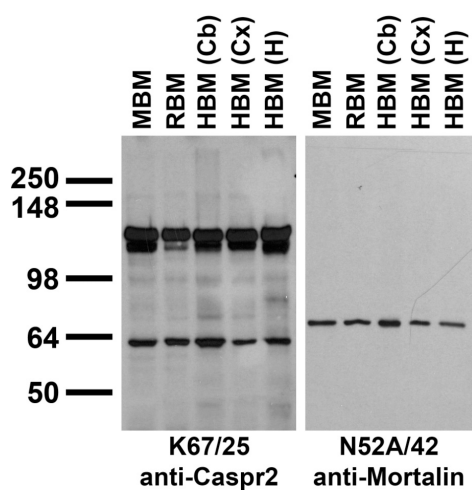
Product images:



Immunoblot on adult rat brain membrane (RBM), and adult mouse brain membranes (MBM) from wild-type (WT) and Caspr2 knockout mice. Caspr KO sample courtesy of Drs Ido Horresh and Ori Peles, The Weizmann Institute of Science.



Adult rat hippocampus immunohistochemistry.



Adult rat hippocampus immunohistochemistry. Right: Right: Immunoblots on brain membranes prepared from whole rat (RBM) and mouse (MBM) brain, and from human cerebral cortex [HBM(Cx)], cerebellum [HBM(Cb)], and hippocampus [HBM(H)].