

Product datasheet for 73-056

Kcnu1 Mouse Monoclonal Antibody [Clone ID: N2/16]

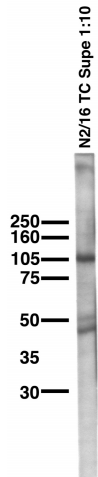
Product data:

| | |
|---------------------|--|
| Product Type: | Primary Antibodies |
| Clone Name: | N2/16 |
| Applications: | IF, WB |
| Recommend Dilution: | Immunoblot (IB) Immunocytochemistry (ICC) |
| Reactivity: | Mouse |
| Host: | Mouse |
| Isotype: | IgG2b |
| Clonality: | Monoclonal |
| Immunogen: | Fusion protein amino acids 1052-1121 of mouse Slo3 (also known as Potassium channel subfamily U member 1, Pore-forming subunit of the sperm-specific alkalization activated K(+) current, Calcium-activated potassium channel subunit alpha-3, Calcium-activated potassium channel, subfamily M subunit alpha-3, Slowpoke homolog 3, Kcnu1, KCa5, Kcnma3, Kcnmc1 and Ksper, accession number O54982). <50% identity with human and rat KCNU1/Slo3 |
| Formulation: | State: Supernatant |
| Gene Name: | potassium channel, subfamily U, member 1 |
| Database Link: | Entrez Gene 16532 Mouse |
| Synonyms: | Slowpoke homolog 3, KCNMA3, KCNMC1, KCa5 |
| Note: | USERS will cite the UC Davis/NIH NeuroMab Facility in any publication(s) describing the research utilizing the MATERIALS. The suggested acknowledgment statement is as follows: "The monoclonal antibody _ was developed by and/or obtained from the UC Davis/NIH NeuroMab Facility, supported by NIH grant U24NS050606 and maintained by the Department of Neurobiology, Physiology and Behavior, College of Biological Sciences, University of California, Davis, CA 95616." Also, please include the complete clone number (e.g., N52A/42) and the Antibody Registry identification number (e.g., RRID:AB_2120479) to avoid ambiguity. View Research License Agreement |

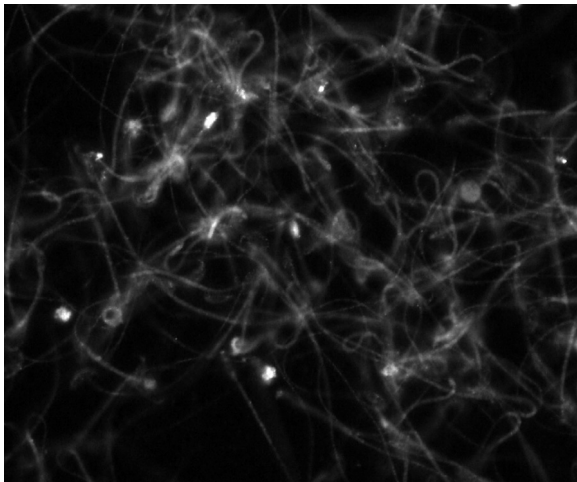


[View online »](#)

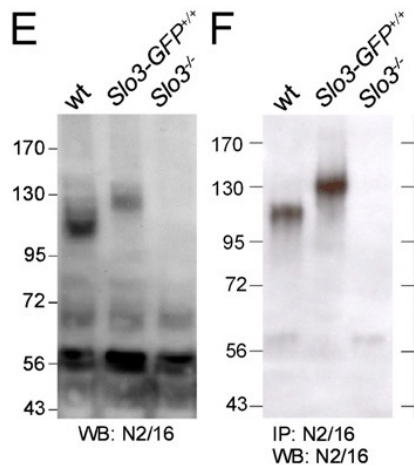
Product images:



Mouse sperm membrane immunoblot.



Mouse sperm immunofluorescence staining.



Immunoblot versus (E) membrane proteins from wildtype (wt), Slo3-eGFP and Slo3 knockout (Slo3^{-/-}) mouse testes and (F) immunoprecipitation products from total testes proteins pulled down with N2/16 probed with N2/16. Data courtesy of Christopher Lingle (Washington University) and reproduced with permission from the Proceedings of the National Academy of Sciences of the United States of America (2011 Zeng et al, PMID 21427226).

