

## Product datasheet for 73-022

### Kcnma1 Mouse Monoclonal Antibody [Clone ID: L6/60]

#### Product data:

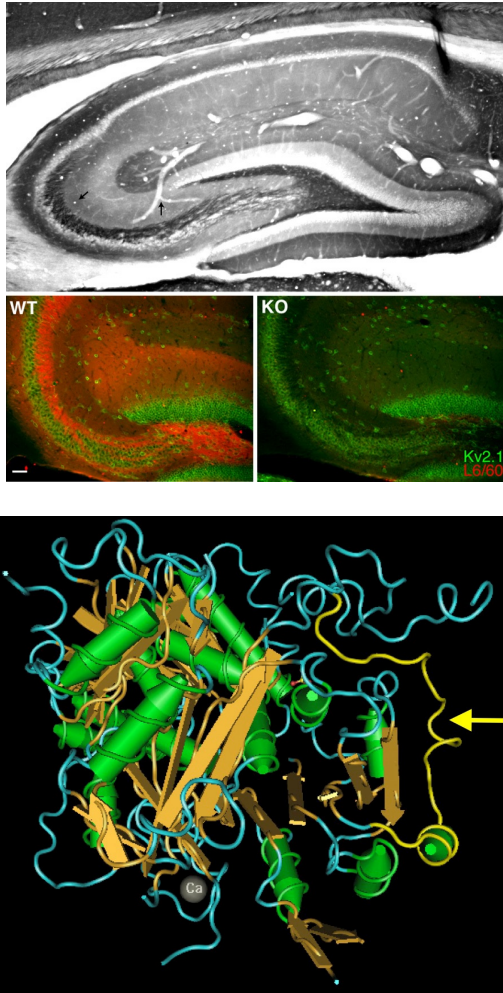
Product Type:	Primary Antibodies
Clone Name:	L6/60
Applications:	IF, IHC, IP, WB
Recommend Dilution:	Immunoblot (IB) Immunohistochemistry (IHC) Immunoprecipitation (IP)
Reactivity:	Human, Mouse, Rat, Zebrafish
Host:	Mouse
Isotype:	IgG2a
Clonality:	Monoclonal
Immunogen:	Fusion protein amino acids 690-1196 (cytoplasmic C-terminus) of mouse Slo1 (also known as Calcium-activated potassium channel subunit alpha-1, Calcium-activated potassium channel, subfamily M subunit alpha-1, KCa1.1, K(VCA)alpha, BK channel, BKCA alpha, Maxi K channel, Slo-alpha, Slowpoke homolog, Kcnma1 and Kcnma, accession number Q08460). Rat: 99% identity (448/450 amino acids identical). Human: 98% identity (446/454 amino acids identical). Epitope mapped to within amino acids 690-715 (PKLMRHDPLLIPGNDQIDNMDSNVKK, 100% conserved in mouse, rat, human, horse, dog, pig, cow, Rhesus monkey and rabbit, indicated by arrow in image at right) by Daniel Levy (University of Chicago).
Formulation:	State: Supernatant
Gene Name:	potassium large conductance calcium-activated channel, subfamily M, alpha member 1
Database Link:	<a href="#">Entrez Gene 16531 Mouse</a>
Synonyms:	Maxi K, BK, K VCA, BKCA channel, Slowpoke homolog, Slo-alpha, Slo1, hSlo



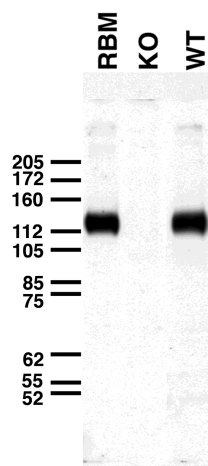
[View online »](#)

**Note:** USERS will cite the UC Davis/NIH NeuroMab Facility in any publication(s) describing the research utilizing the MATERIALS. The suggested acknowledgment statement is as follows: "The monoclonal antibody \_ was developed by and/or obtained from the UC Davis/NIH NeuroMab Facility, supported by NIH grant U24NS050606 and maintained by the Department of Neurobiology, Physiology and Behavior, College of Biological Sciences, University of California, Davis, CA 95616." Also, please include the complete clone number (e.g., N52A/42) and the Antibody Registry identification number (e.g., RRID:AB\_2120479) to avoid ambiguity. [View Research License Agreement](#)

### Product images:



Top: adult rat hippocampus immunohistochemistry. Bottom: immunofluorescence staining of hippocampal CA3 of adult WT and Kv2.1 KO mice with L6/60 (red) and Kv2.1 rabbit polyclonal (green).



Immunoblot versus crude membranes from adult rat brain (RBM) and WT and Slo1 KO mouse brains probed with L6/60 TC supe.