

Product datasheet for 73-000

CASK Mouse Monoclonal Antibody [Clone ID: K56A/50]

Product data:

Product Primary Antibodies

Type:

Clone Name: K56A/50

Applications: IHC, IP, WB

Recommend Immunoblot (IB)

Dilution: Immunohistochemistry (IHC)
Immunoprecipitation (IP)

Reactivity: Human, Mouse, Rat, Xenopus, Zebrafish

Host: Mouse

Isotype: IgG1

Clonality: Monoclonal

Immunogen: Fusion protein amino acids 318-415 (first L27 domain, NSFYGDPPPEELPDFSEDPSTSSGLLAAERAVSQVLDSLEEIHALTDCEKDLDFLHVSFQDQHLHTLLDLYDKINTKSSPQIRNPPSDA of human Peripheral plasma membrane protein CASK (also known as Calcium/calmodulin-dependent serine protein kinase 2, Protein lin-2 homolog and LIN2, accession number O14936)
Rat: 100% identity (98/98 amino acids identical)
Mouse: 100% identity (98/98 amino acids identical)

Formulation: State: Supernatant

Gene Name: calcium/calmodulin dependent serine protein kinase

Database [Entrez Gene 8573 Human](#)

Link:

Synonyms: Lin-2 homolog, LIN2



[View online »](#)

Note:

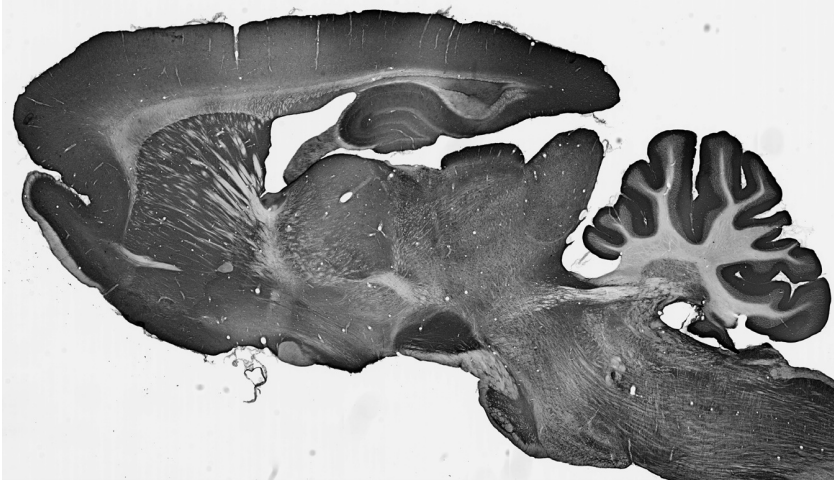
USERS will cite the UC Davis/NIH NeuroMab Facility in any publication(s) describing the research utilizing the MATE suggested acknowledgment statement is as follows:

"The monoclonal antibody _ was developed by and/or obtained from the UC Davis/NIH NeuroMab Facility, supported by grant U24NS050606 and maintained by the Department of Neurobiology, Physiology and Behavior, College of Biological Sciences, University of California, Davis, CA 95616."

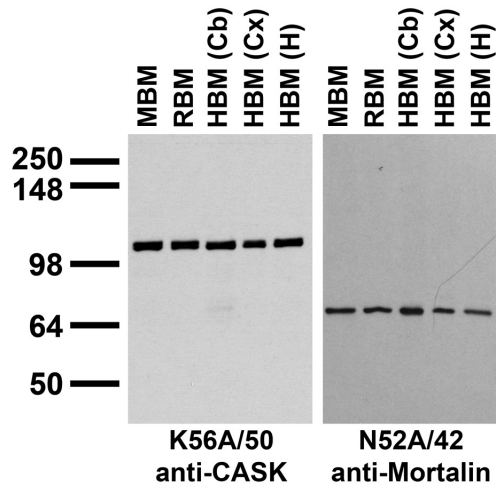
Also, please include the complete clone number (e.g., N52A/42) and the Antibody Registry identification number (e.g., RRID:AB_2120479) to avoid ambiguity.

[View Research License Agreement](#)

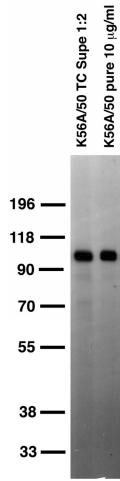
Product images:



Adult rat brain immunohistochemistry



Immunoblot against crude membrane fractions from whole mouse (MBM) or rat (RBM) brain and from human cerebellum [HBM(Cb)], cerebral cortex [HBM(Cx)] or hippocampus [HBM(H)] and probed with K56A/50 (left) or N52A/42 (right) TC supe.



adult rat brain membrane immunoblot