

## Product datasheet for 24330

### Serotonin transporter (SLC6A4) (579-599) Rabbit Polyclonal Antibody

#### Product data:

Product Type:	Primary Antibodies
Applications:	IF, IHC, WB
Recommend Dilution:	<b>IHC Quality Control:</b> The ImmunoStar Serotonin Transporter (5HTT) was quality control tested using standard immunohistochemical methods. The antiserum demonstrates significant labeling of rat raphe nuclei, hypothalamus, cortex and spinal cord using indirect immunofluorescent and biotin/avidin-HRP techniques. Western blot analysis using rat brain extracts of cortex, hypothalamus, midbrain, and hindbrain, specifically labels a single band. Immunolabeling is completely abolished by preadsorption with synthetic rat 5HT transporter (602-622). <b>Tissue:</b> Rat raphe nuclei, hypothalamus, cortex, and spinal cord. <b>Perfusion Fixation</b> <ul style="list-style-type: none"><li>• Fixation: 4% paraformaldehyde in 0.1M phosphate buffer, pH 7.4; 500 mL over 20 min.</li><li>• Post Fixation: 1.5 hour at 4°C in 4% paraformaldehyde in 0.1M phosphate buffer, pH 7.4.</li><li>• Note: If needed, low levels of glutaraldehyde (0.1-0.3%) may be used in conjunction with paraformaldehyde.</li></ul> <b>Sections:</b> 10 µm cryostat or 50 µm vibratome. <b>Tissue Incubation:</b> 18-24 hours at 2-8°C <b>Detection System:</b> Use Cy3 or Bn/Av-HRP reagents at dilutions recommended by the manufacturers. <b>Suggested Dilution:</b> 1/800 – 1/1,000 in PBS/0.3% Triton X-100 – indirect immunofluorescence. 1/10,000 – 1/15,000 in PBS/0.3% Triton X-100 – Bn/Av-HRP immunohistochemistry.
Reactivity:	Human, Monkey, Mouse, Rat
Host:	Rabbit
Clonality:	Polyclonal
Immunogen:	Synthetic peptide sequence corresponding to amino acids (602-622) of rat 5HT transporter coupled to keyhole limpet hemocyanin (KLH).
Specificity:	Reacts with: Human, Marine, Monkey, Mouse, Rat, Sparrow. Predicted to React With: Bird, Bovine, Frog, Guinea Pig, Monkey, Sheep.



[View online »](#)

**Formulation:** State: Serum  
State: Lyophilized whole serum  
Preservative:  $\leq 0.09\%$  sodium azide

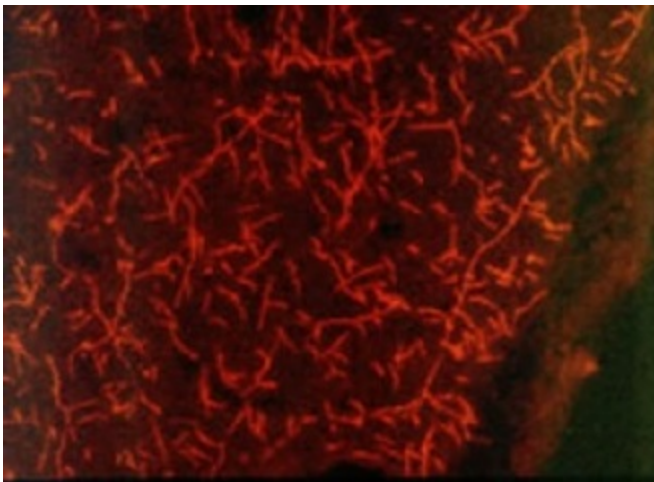
**Gene Name:** Homo sapiens solute carrier family 6 member 4 (SLC6A4)

**Database Link:** [Entrez Gene 15567 Mouse](#)[Entrez Gene 25553 Rat](#)[Entrez Gene 6532 Human](#)

**Synonyms:** 5HT transporter, 5HTT, HTT, Sodium-dependent serotonin transporter

**Protein Families:** Druggable Genome, Transmembrane

### Product images:



Staining with 5-HT (Serotonin) Transporter Antibody 24330