

Product datasheet for 24112

Calca Rabbit Polyclonal Antibody

Product data:

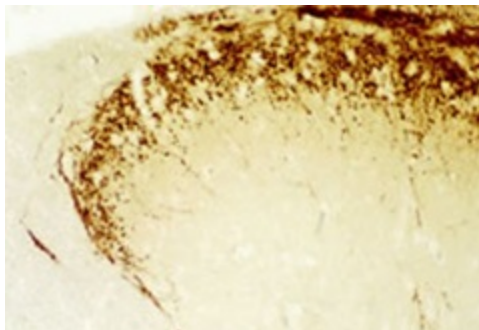
Product Type:	Primary Antibodies
Applications:	IF, IHC
Reactivity:	Human, Mammalian, Mouse, Porcine, Rat
Host:	Rabbit
Isotype:	IgG
Clonality:	Polyclonal
Immunogen:	Synthetic rat alpha-CGRP coupled to bovine thyroglobulin (BTg) with glutaraldehyde.
Specificity:	The antibody has a proven and strong Biotin-Streptavidin/HRP staining at a 1/2000-1/4000 dilution in rat amygdala, and spinal cord.

The specificity of the antiserum was evaluated by soluble pre-adsorption with the peptides in question at a final concentration of 10⁻⁵M. CGRP immunolabeling was completely abolished by pre-adsorption with rat α -CGRP and partially eliminated by pre-adsorption with rat γ -CGRP. Pre-adsorption with the following peptides resulted in no loss of immunostaining: rat amylin, rat adrenomedullin, calcitonin, neurotensin, somatostatin, substance P, leucine enkephalin, methionine enkephalin, VIP, CCK-8, vasopressin and neuropeptide Y.

Formulation:	State: Serum State: Lyophilized Whole Serum Preservative: ≤ 0.09% sodium azide
Gene Name:	calcitonin-related polypeptide alpha
Database Link:	Entrez Gene 24241 Rat
Synonyms:	Calcitonin gene-related peptide I, Alpha-type CGRP, CALC1, CGRP-I



[View online »](#)

Product images:

Staining with CGRP (Calcitonin Gene Related Peptide) Antibody 24112