

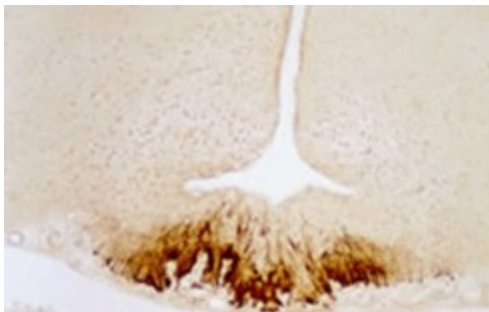
Product datasheet for 20084

Corticotropin Releasing Factor (CRH) Rabbit Polyclonal Antibody

Product data:

Product Type:	Primary Antibodies
Applications:	IF, IHC
Recommend Dilution:	The ImmunoStar antiserum was quality control tested using standard immunohistochemical methods. The antiserum demonstrates strongly positive labeling of rat median eminence using indirect immunofluorescent and biotin/avidin-HRP techniques. Recommended primary dilution is 1/1000 - 1/2000 in PBS/0.3% Triton X-100 - Biotin/Avidin-HRP Technique.
Reactivity:	Mammalian
Host:	Rabbit
Clonality:	Polyclonal
Formulation:	State: Serum State: Lyophilized Whole Serum
Gene Name:	Homo sapiens corticotropin releasing hormone (CRH)
Database Link:	Entrez Gene 1392 Human
Synonyms:	CRF, CRH, Corticotropin-Releasing Hormone, Corticotropin-Releasing Factor
Protein Families:	Druggable Genome, Secreted Protein
Protein Pathways:	Long-term depression

Product images:



Staining with CRF (Corticotropin Releasing Factor) Antibody 20084



[View online »](#)