

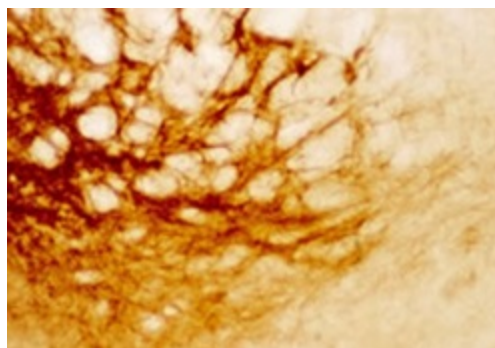
## Product datasheet for 20066

### Enkephalin (PENK) Rabbit Polyclonal Antibody

#### Product data:

Product Type:	Primary Antibodies
Applications:	IF, IHC
Reactivity:	Mammalian
Host:	Rabbit
Clonality:	Polyclonal
Immunogen:	Synthetic leucine enkephalin coupled to keyhole limpet hemocyanin (KLH) to bovine thyroglobulin and BSA with glutaraldehyde.
Formulation:	State: Serum State: Lyophilized whole serum Preservative: $\leq 0.09\%$ sodium azide
Gene Name:	Homo sapiens proenkephalin (PENK)
Database Link:	<a href="#">Entrez Gene 5179 Human</a>
Synonyms:	preproenkephalin; proenkephalin
Protein Families:	Secreted Protein

#### Product images:



Staining with Leucine Enkephalin Antibody 20066



[View online »](#)