

Product datasheet for 20065

Enkephalin (PENK) Rabbit Polyclonal Antibody

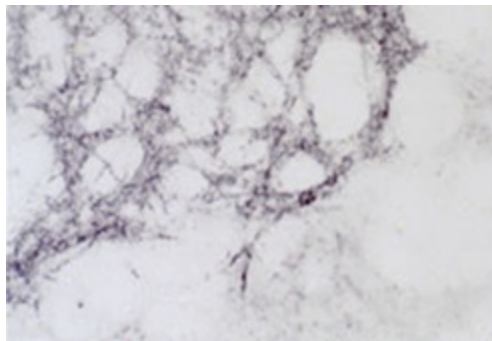
Product data:

Product Type:	Primary Antibodies
Applications:	IF, IHC
Reactivity:	Birds, Mammalian
Host:	Rabbit
Clonality:	Polyclonal
Immunogen:	Synthetic methionine enkephalin coupled to bovine thyroglobulin (BTg) with glutaraldehyde.
Specificity:	Reacts With: Astyanax Jordani (Fish), Bird, Blowfly, Bovine, Bullfrog, Cat, Chick, Chicken, Cockroach, Cod, Crab, Dog, Fish, Frog, Gerbil, Goldfish, Guinea Pig, Hamster, Human, Lamprey, Leech, Lymnaea Stagnalis (Snail), Manducta Sexta (Moth), Monkey, Mouse, Octopus, Parrot, Pig, Pigeon, Rabbit, Rana Esculenta (Frog), Rana Pipiens (Leopard Frog), Rana Temporaria (Frog), Rat, Ratfish, Salamander, Salmon, Sea Bass (Fish), Shrew, Squirrel Monkey, Starling, Tapeworm, Turtle, Zebra Finch
Formulation:	State: Serum State: Lyophilized Whole Serum Preservative: ≤ 0.09% sodium azide
Gene Name:	Homo sapiens proenkephalin (PENK)
Database Link:	Entrez Gene 5179 Human
Synonyms:	preproenkephalin; proenkephalin
Protein Families:	Secreted Protein



[View online »](#)

Product images:



Staining with Methionine Enkephalin Antibody
20065