

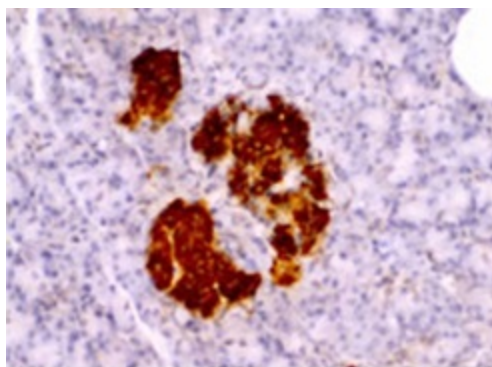
## Product datasheet for 20056

### Insulin (INS) Rabbit Polyclonal Antibody

#### Product data:

Product Type:	Primary Antibodies
Applications:	IF, IHC
Reactivity:	Bovine, Porcine, Rat
Host:	Rabbit
Clonality:	Polyclonal
Formulation:	State: Serum State: Lyophilized Whole Serum
Gene Name:	Homo sapiens insulin (INS), transcript variant 1
Database Link:	<a href="#">Entrez Gene 3630 Human</a>
Synonyms:	INS
Protein Families:	Druggable Genome, ES Cell Differentiation/IPS, Secreted Protein
Protein Pathways:	Insulin signaling pathway, Maturity onset diabetes of the young, mTOR signaling pathway, Oocyte meiosis, Progesterone-mediated oocyte maturation, Prostate cancer, Regulation of actin cytoskeleton, Regulation of autophagy, Type I diabetes mellitus, Type II diabetes mellitus

#### Product images:



Staining with Insulin Antibody 20056



[View online »](#)