

Monoclonal Anti-human DC-SIGN/CD209

Product reference: DDX0203

Description

DC-SIGN ("DC Specific, ICAM-3 Grabbing, Nonintegrin")/CD209 and liver/lymph node-specific ICAM-3-grabbing nonintegrin (L-SIGN) (CD299/DC-SIGNR for DC-SIGN-related molecule; DC-SIGN2) are closely related genes that map to chromosome 19p13.3. Both genes encode a member of the C-type lectin family of type II transmembrane proteins. The two receptors are 77% identical at the amino acid level, have similar ligands. They are expressed in different tissues. DC-SIGN is expressed on dendritic cells and macrophages. L-SIGN is found in the endothelial cells of liver, lymph nodes, and placenta and is absent on DCs and macrophages. Both receptors have been shown to interact with ICAM-3—DC-SIGN—is a high affinity receptor for HIV gp120 (Soilleux E.J. 2003, *Clinical Science* 104, 437-; Dakappagari N., et al. 2006, *The J Immunol*, 176, 426; Geijtenbeek T.B., et al. 2000, *Cell*, 100, 57; Bashirova A. et al., 2001, *J. Exp. Med.*, 193, 671)

Clone: 103G2.07
Species: mouse
Specificity: human DC-SIGN
Immunogen: HeLa cells stably transfected-with human DC-SIGN
Species cross- reactivity: weak expression on NIH3T3-transfected LSIGN
Isotype: IgG1, κ
Formulation/size: **Purified:** 100 µg in 200µl / 50 µg in 100 µl Tris-NaCl pH 8
Coupled: 100 µg in 200µl / 50 µg in 100 µl PBS 50% glycerol

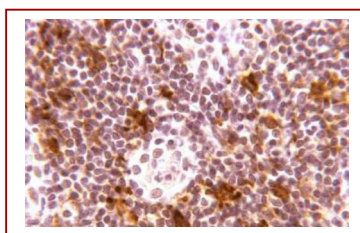
Available formats:

Reference N°		Format	Application tested
50 µg	100 µg		
DDX0203P-50	DDX0203P-100	purified	Surface flow cytometry, Formol- paraffin, Bouin paraffin, Histowax
DDX0203A488-50	DDX0203A488-100	Alexa-fluor®488	Surface Flow cytometry
DDX0203A546-50	DDX0203A546-100	Alexa- fluor®546	IF
DDX0203A647-50	DDX0203A647-100	Alexa- fluor®647	Surface Flow cytometry
DDX0203B-50	DDX0203B-100	Biotin (<i>on request</i>)	Surface Flow cytometry, IHC

Other clones available on request

Applications tested

flow cytometry and formol-embedded paraffin IHC



Formalin-fixed paraffin-embedded human tonsil .DC-SIGN is visualized by brown labeling with DAB

Usage recommendation:

*This monoclonal antibody may be used between 5-20 µg/ml
 *Optimal dilution should be determined by each laboratory for each application
 *Coupled antibody: to maintain RT before using

Aliquot storage conditions

-20°C. KEEP CONTENTS STERILE: no preservative.
Purified antibodies: avoid repeated freeze/thaw cycles.
Coupled antibodies: glycerol protects from freezing.

Not for use in Humans. For research purpose only