

# Rabbit IgG RapidTiter Strips

## Catalog No.

AR100098 (25 Strips)  
AR100098L (100 Strips)

## Principle of the Assay

Rabbit IgG RapidTiter Strips are ready-to-use Dip & Read test strips, designed for rapid detection and semi quantitative measurement of rabbit IgG, and rabbit IgG Fc fused proteins. Just immerse the strip in your sample and interpret the result in less than five minutes—no specialized equipment or instruments required. The strip can be applied directly to unpurified samples in cell lysis buffer or cell culture medium (with or without FBS). It is also compatible with samples in common buffers such as PBS, Tris, or HEPES etc.

The detection limit of the Rabbit IgG RapidTiter Strips is 0.1 µg/mL, and its quantitative range is between 0.1 µg/mL to above 10 mg/mL Unlike traditional sandwich lateral flow assays, it is not affected by the Hook Effect and does not generate false negative results in high concentration samples. By comparing the line pattern with the images provided in the protocol, sample concentrations can be semi-quantitatively determined by naked eye inspection simply. Rabbit IgG RapidTiter Strips are intended for research use only.

## Package Contents

Cat #	RapidTiter Strips	Reference Card
AR100098	25 Strips	1
AR100098L	4 x 25 Strips	1

## Storage and Stability

Store all strip components at room temperature. Strips should not be used beyond the expiration date. Leave RapidTiter Strips in its canister until just before use. Keep dry. Avoid prolong exposure to humidity.

## Precautions

1. The test strip contains a total of three lines: a control line (C), test line T1, and test line T2. The control line (C) is the uppermost line, located approximately 42 mm from the bottom of the strip. Test line T1 is the middle line, positioned about 38 mm from the strip bottom, and test line T2 is the bottom line, located approximately 34 mm from the strip bottom.
2. The line patterns shown in the protocol are read for 5 minutes. Reading the results at longer time points may increase assay sensitivity. The line pattern remains stable for at least 3 hours, although the line color may gradually fade over time.
3. The product can also be used to detect rabbit IgG Fc-fusion proteins. The concentrations of rabbit IgG Fc-fusion proteins should be calculated based on the molecular weight of the protein.
4. For more accurate measurements, standard samples with known concentrations of the same protein prepared in the same matrix can be used to first generate reference line patterns, which can then be compared with the line pattern of the test sample.

### OriGene Headquarters

9620 Medical Center Dr Rockville, MD 20850  
+1-301-340-3188  
custsupport@origene.com  
techsupport@origene.com  
sales@origene.com

### OriGene EU

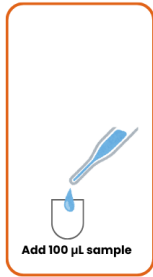
Schillerstraße 5  
32052 Herford, Germany  
+49-5221-346060-0  
info-de@origene.com

## Test Procedure

Read all instructions carefully before performing the test. Failure to follow the instructions may result in inaccurate test results.

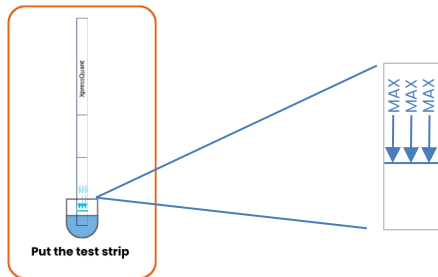
1. Add 100  $\mu$ L sample to a well (e.g. a well of a 96-well plate) or a vial.

**Note:** Dilute the sample with a buffer (e.g. PBS) if desired.

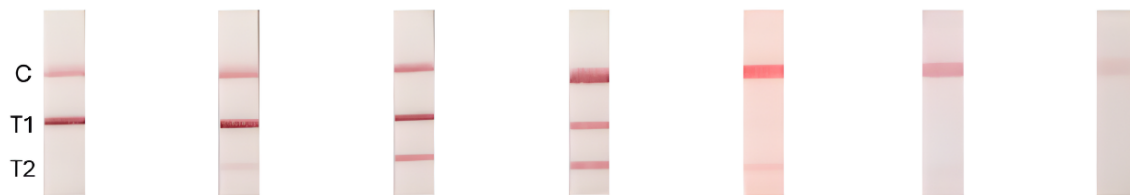


2. Put the test strip into the vial, with the arrow label side immersed in the sample.

**Note:** Do not immerse above the MAX line



3. Wait 5 minutes until the control line is clear.
4. Read the result by comparing the images below



Concentration	0	0.1 $\mu$ g/mL	1 $\mu$ g/mL	10 $\mu$ g/mL	100 $\mu$ g/mL	1 mg/mL	$\geq 10$ mg/mL
Line pattern	Two clear lines C and T1. T1>C	Two clear lines C, T1 and a weak line T2. T1>C>T2	Three clear lines C, T1 and T2. T1>C $\approx$ T2	Three clear lines C, T1 and T2. C>T2 $\approx$ T1	Two clear lines C, T2 and a weak line T1. C>T2>T1	One clear line C and one faint lines T2. C>>T2	Only one line C. C may be weak

### OriGene Headquarters

9620 Medical Center Dr Rockville, MD 20850  
+1-301-340-3188  
custsupport@origene.com  
techsupport@origene.com  
sales@origene.com

### OriGene EU

SchillerstraBe 5  
32052 Herford, Germany  
+49-5221-346060-0  
info-de@origene.com