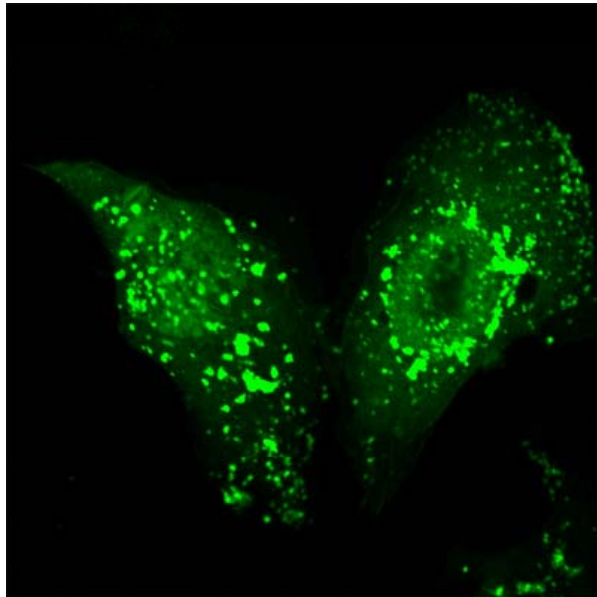
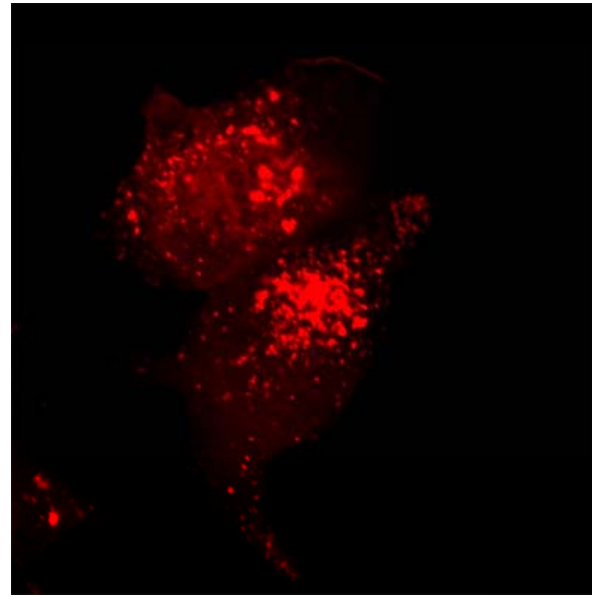


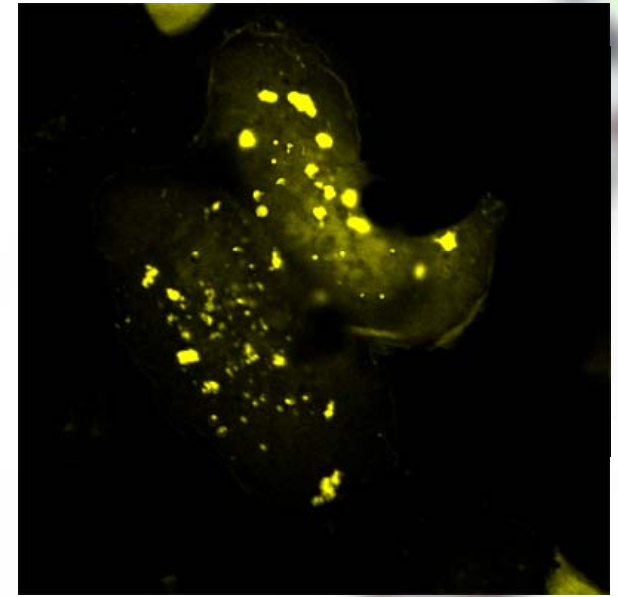
# Cellular Organelles Markers



**Endosome**  
(Rab4-N-GFP)  
Cat#: RC100025

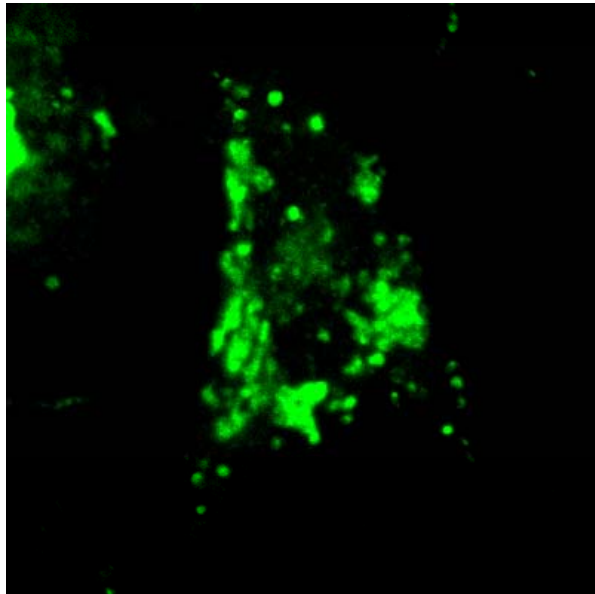


**Endosome**  
(Rab4-N-RFP)  
Cat#: RC100057

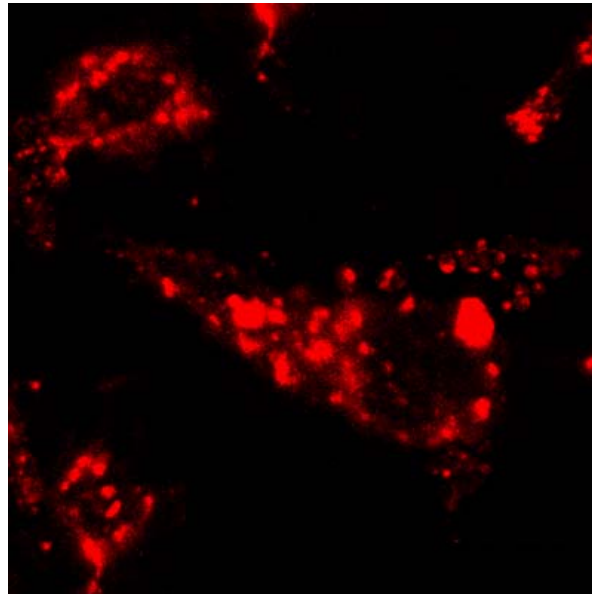


**Endosome**  
(Rab4-N-YFP)

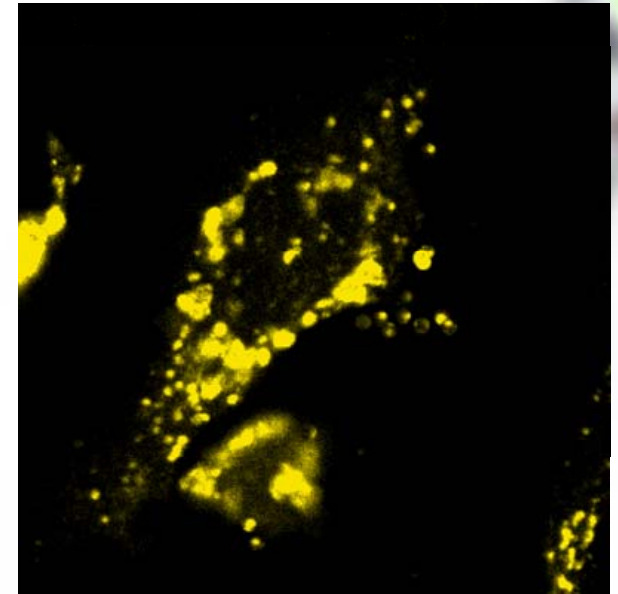
# Cellular Organelles Markers



**Lysosome**  
(LAMP-C-GFP)  
Cat#: RC100016



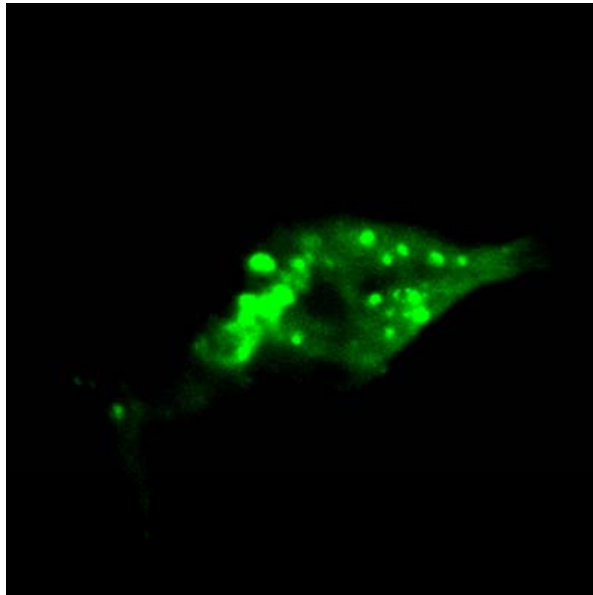
**Lysosome**  
(LAMP-C-RFP)  
Cat# RC100048



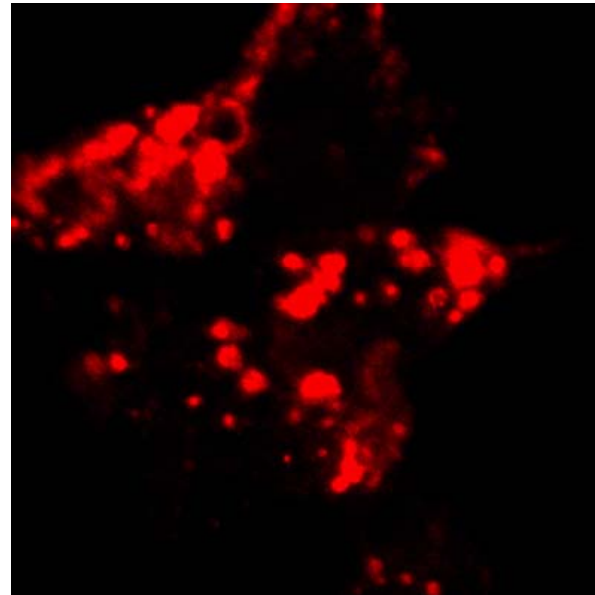
**Lysosome**  
(LAMP-C-YFP)

# Cellular Organelles Marker

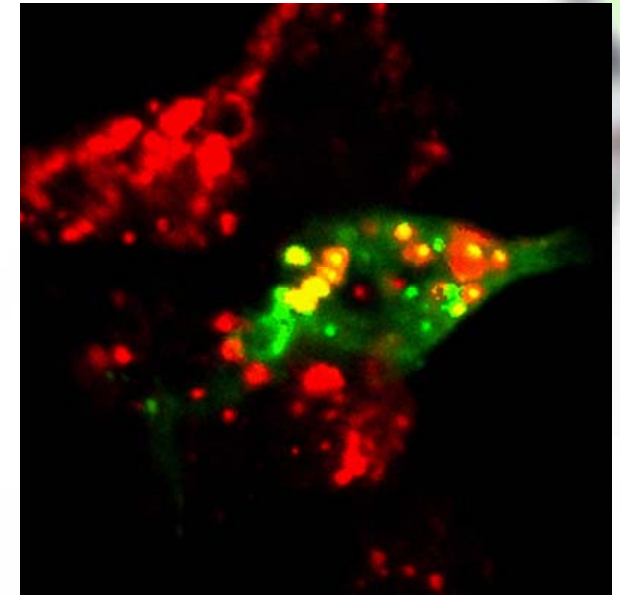
## Lysosome-autophagosome co-localization



**Autophagosome**  
(LC3-N-GFP)  
Cat#: RC100020

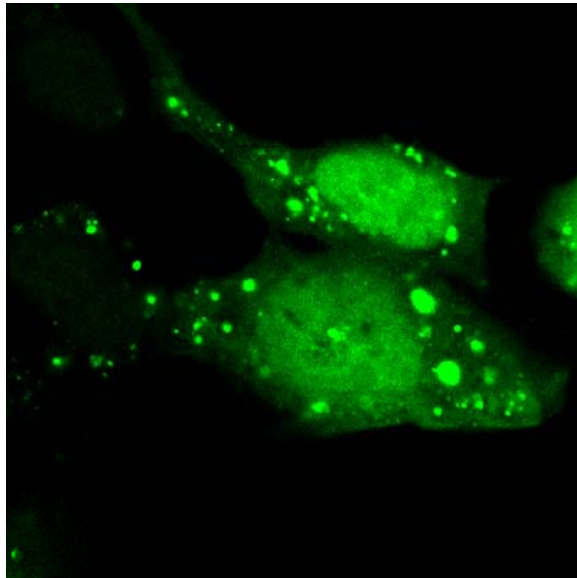


**Lysosome**  
(LAMP-C-RFP)  
Cat#: RC100048

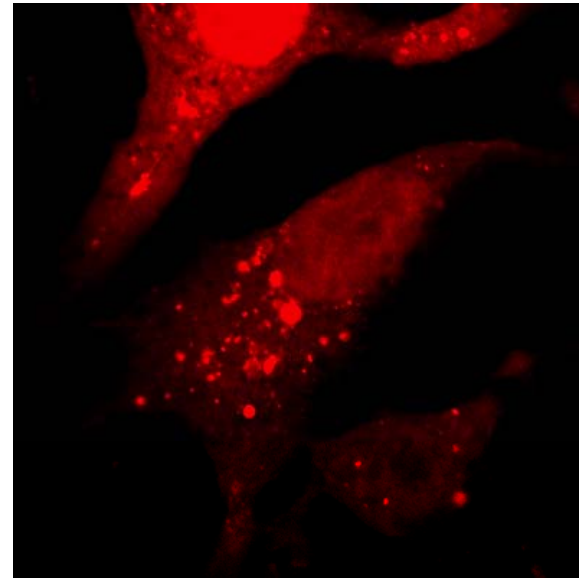


**Merged**  
(RFP + GFP,  
Yellow indicates  
Co-localization regions)

# Cellular Organelles Marker

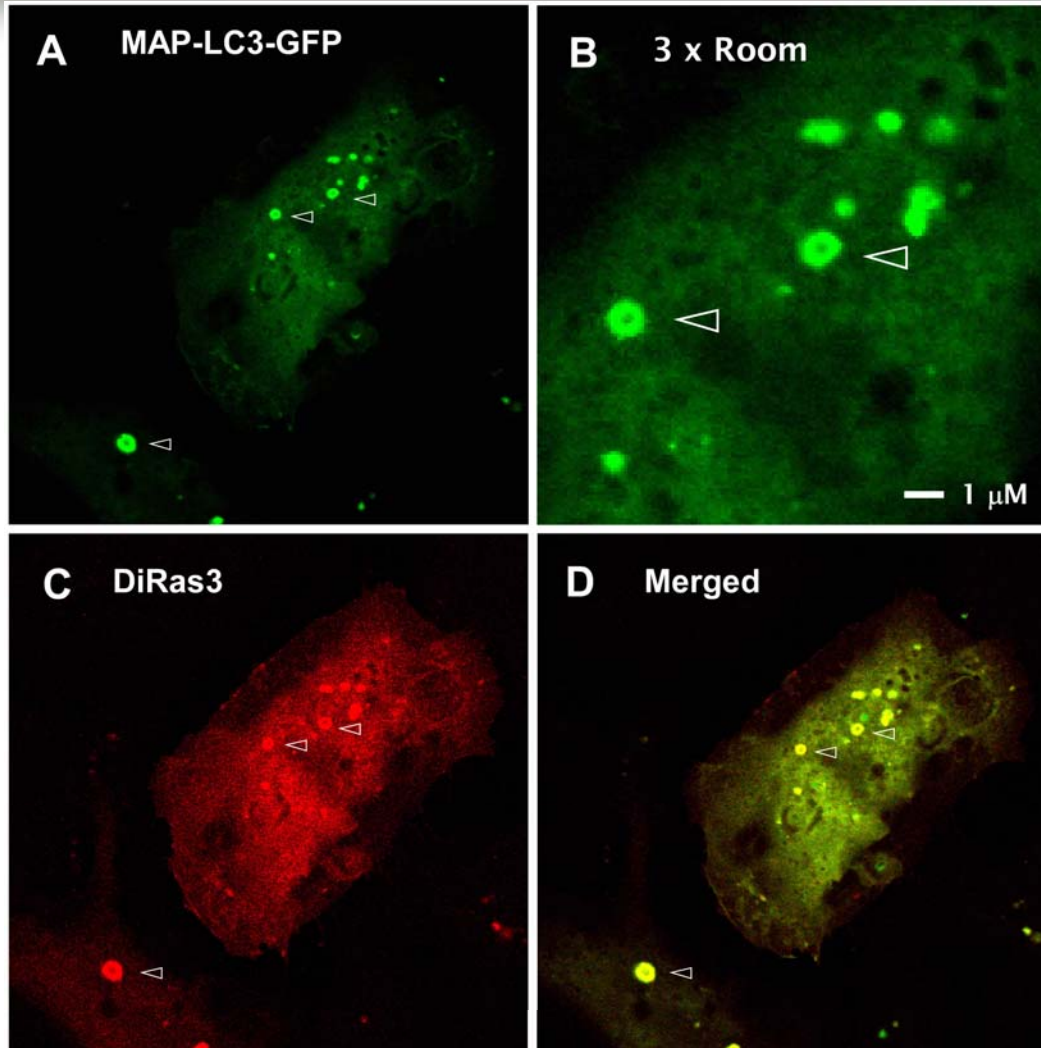


**Autophagasome**  
(LC3-N-GFP)  
Cat#: RC100020



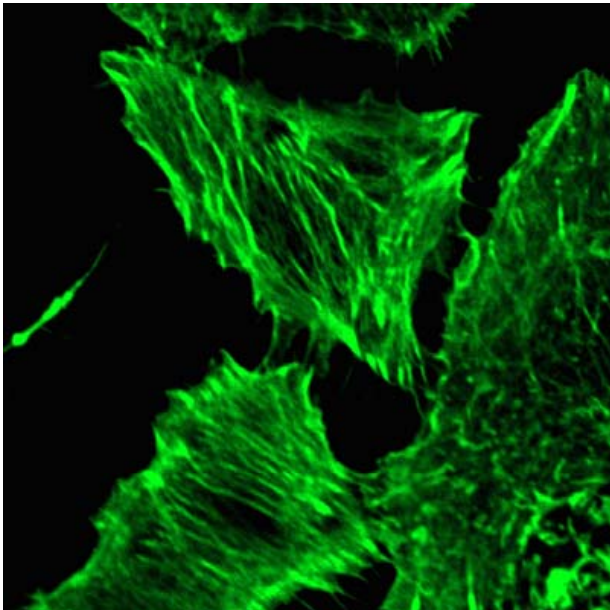
**Autophagasome**  
(LC3-N-RFP)  
Cat#: (RC100052)

# Cellular Organelles Markers

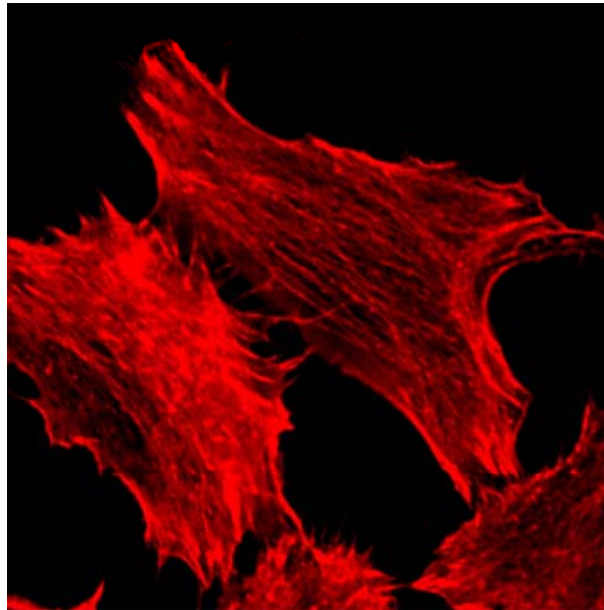


Autophagosome co-localized with an autophagy-inducer DiRas3(Cat# RC100043)

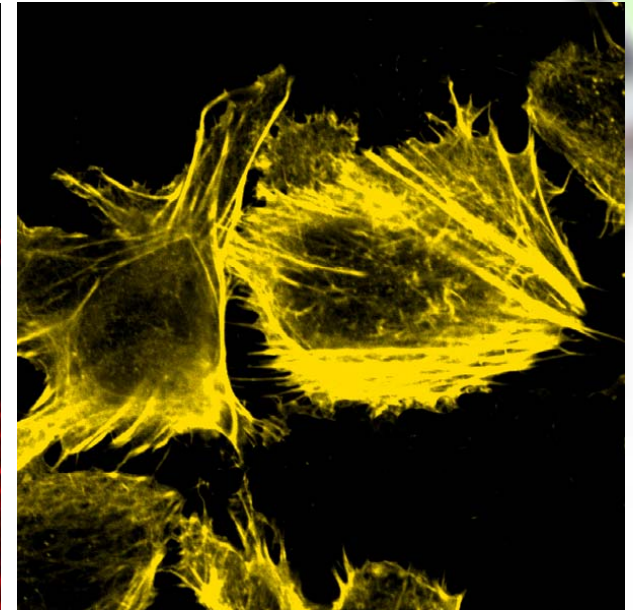
# Cytoskeleton Markers



**Actin Stress Fibers**  
(beta actin-N-GFP)  
Cat#: RC100002



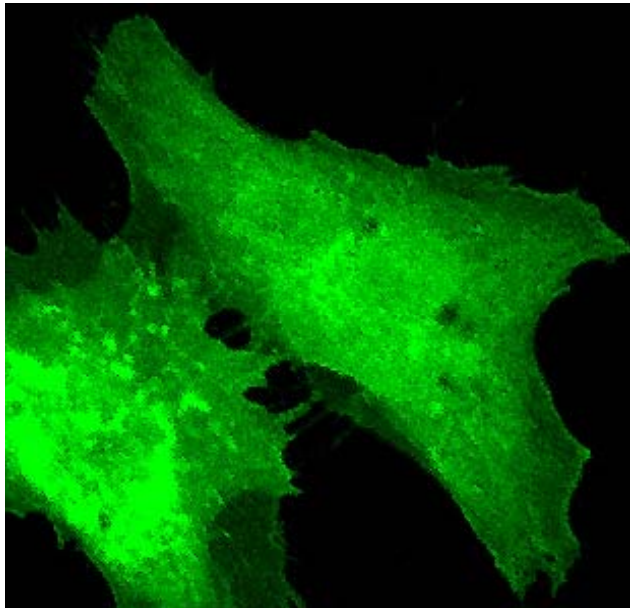
**Actin Stress Fibers**  
(beta actin-N-RFP)  
Cat#: RC100034



**Actin Stress Fibers**  
(beta actin-N-YFP)

(Stimulated with activated RhoA)

# Cytoskeleton Markers



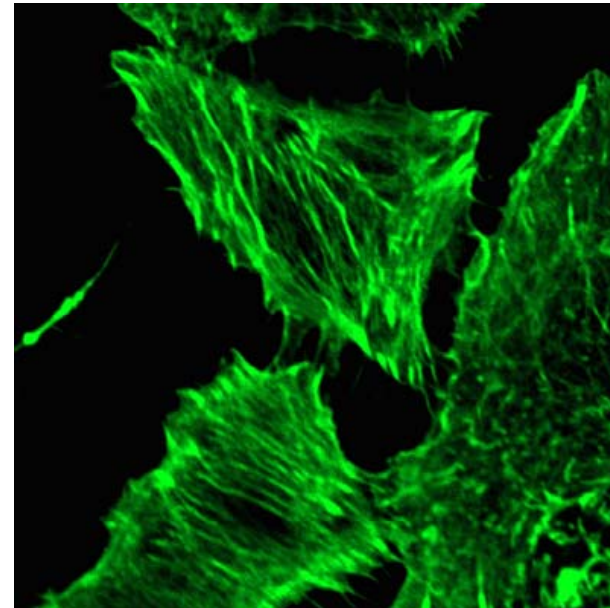
## No Stress Fibers

(beta actin-N-GFP)

Cat#: RC100002

Activated RhoA  
Stimulation

-



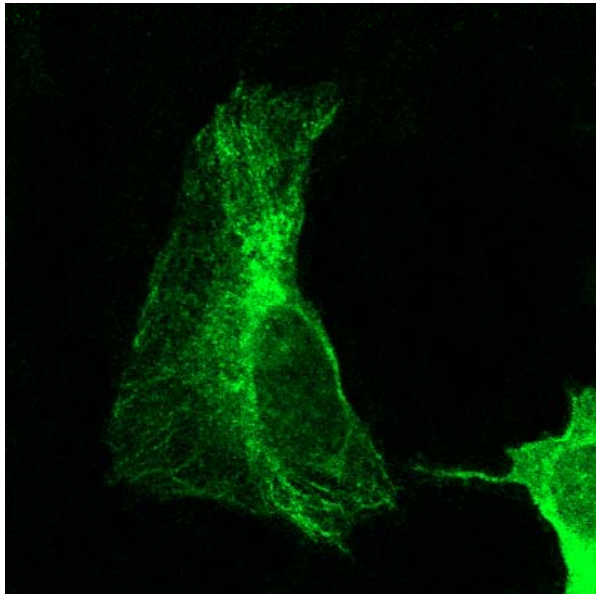
## Actin Stress Fibers

(beta actin-N-GFP)

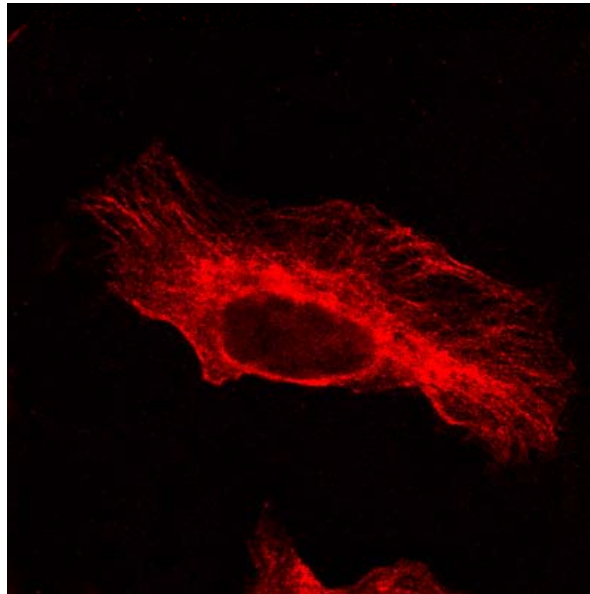
Cat#: RC100002

+

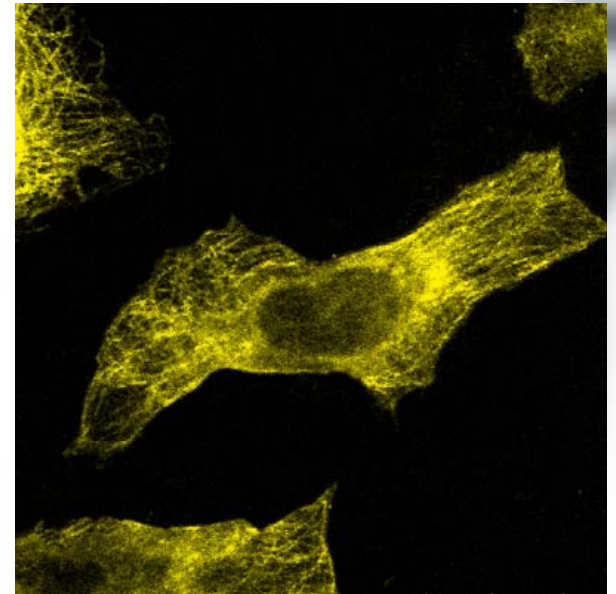
# Cytoskeleton Markers



**Cytoskeleton**  
(Tubulin-N-GFP)  
Cat#: RC100030



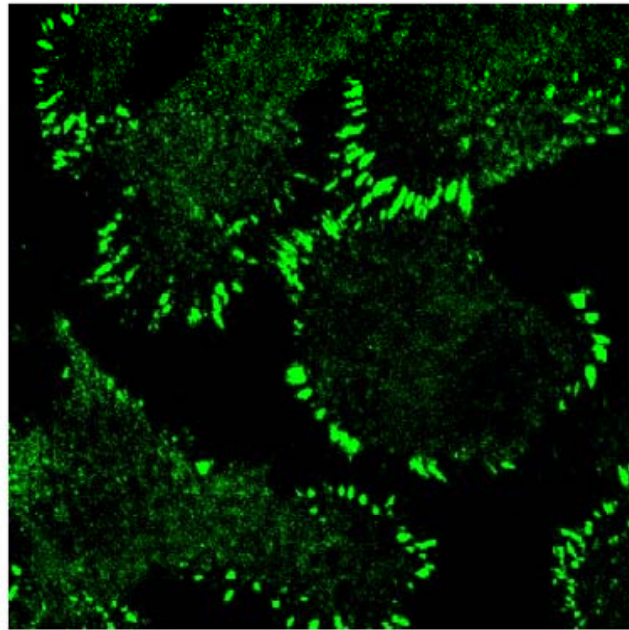
**Cytoskeleton**  
(Tubulin-N-RFP)  
Cat#: RC100062



**Cytoskeleton**  
(Tubulin-N-YFP)



# Cytoskeleton Markers



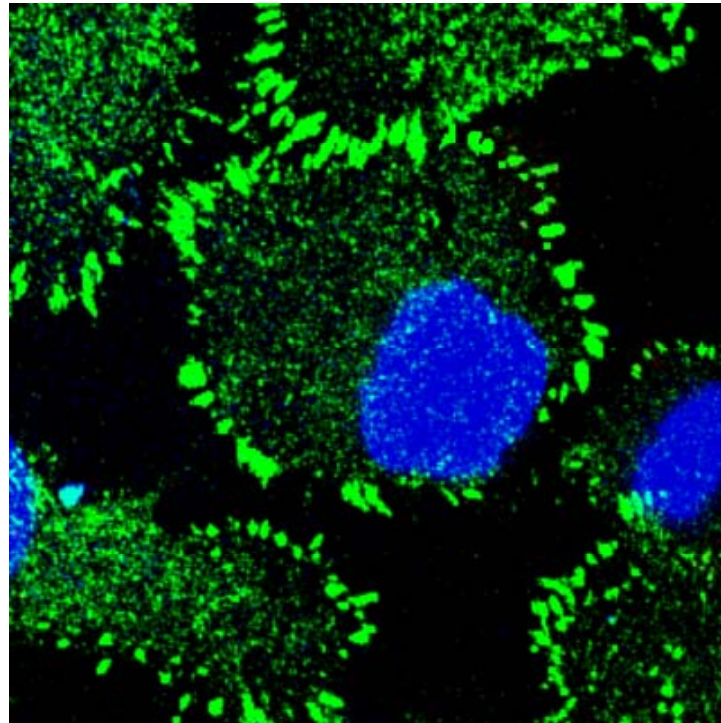
## Focal Adhesion

(FAK-C-GFP)

Cat#: RC100012

(Cultured in Fibronectin coated plates)

# Focal Adhesion Markers



## Focal Adhesion

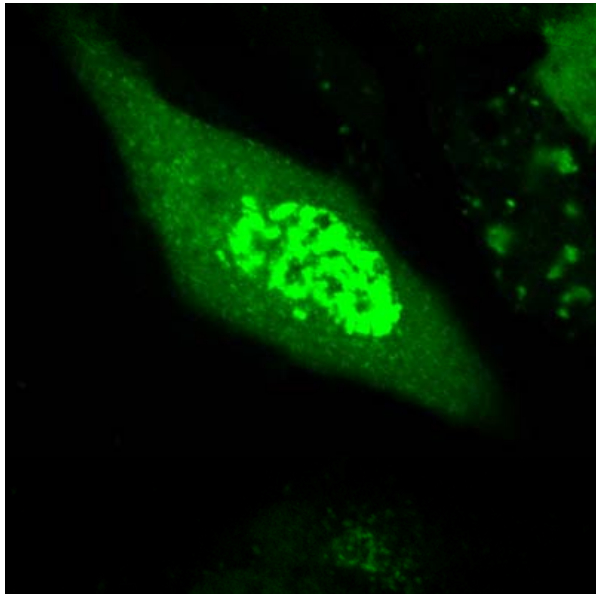
(FAK-C-GFP)

Cat#: RC100012

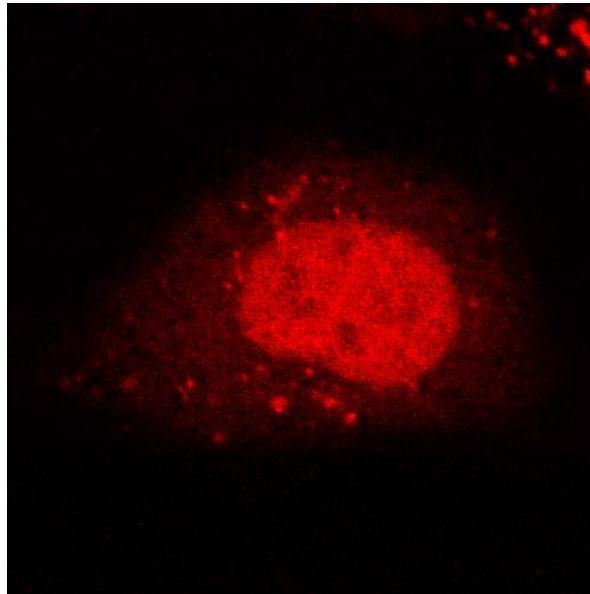
Nuclei stained with **DAPI**

Cultured in Fibronectin coated plates

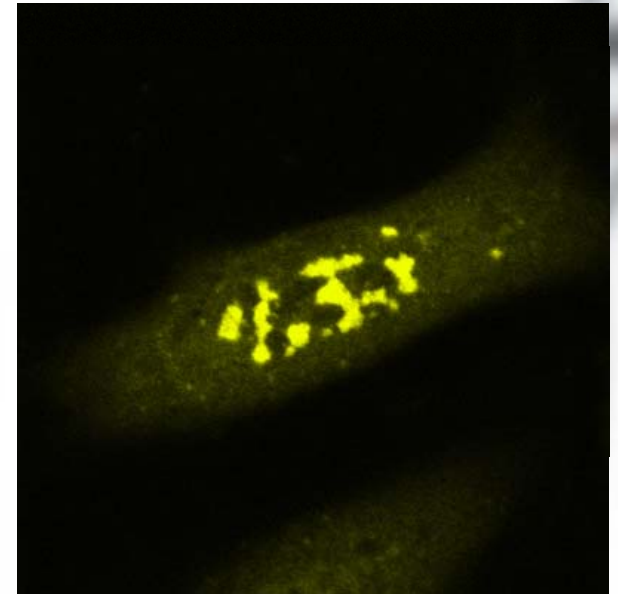
# Nuclear Proteins



**Nuclear**  
(Cyclin D1-C-GFP)  
Cat#: RC100009

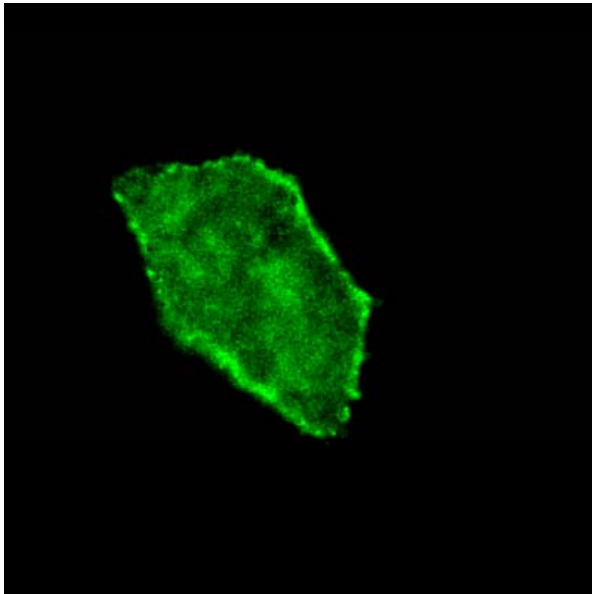


**Nuclear**  
(Cyclin D1-C-RFP)  
Cat#: RC1000041

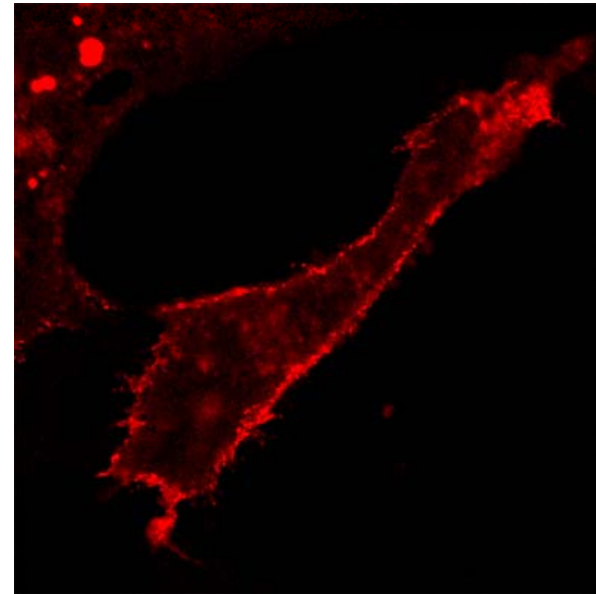


**Nuclear**  
(Cyclin D1-C-YFP)

# Cytoplasmic Membrane

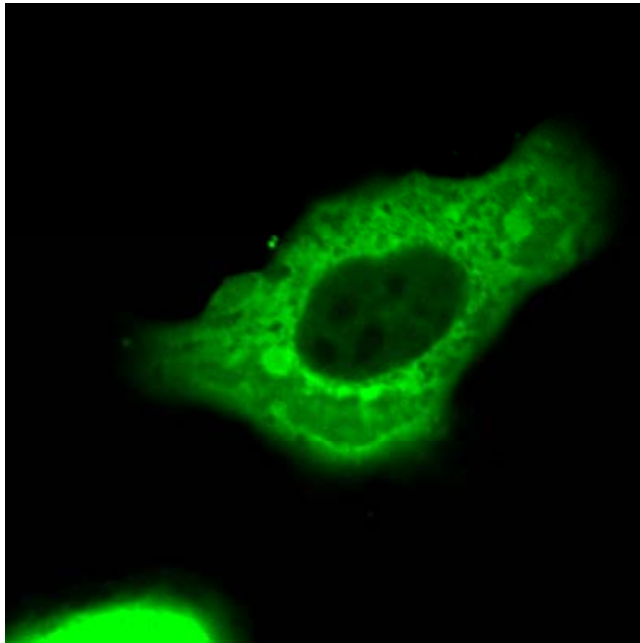


**Membrane**  
(IGF1R-C-GFP)

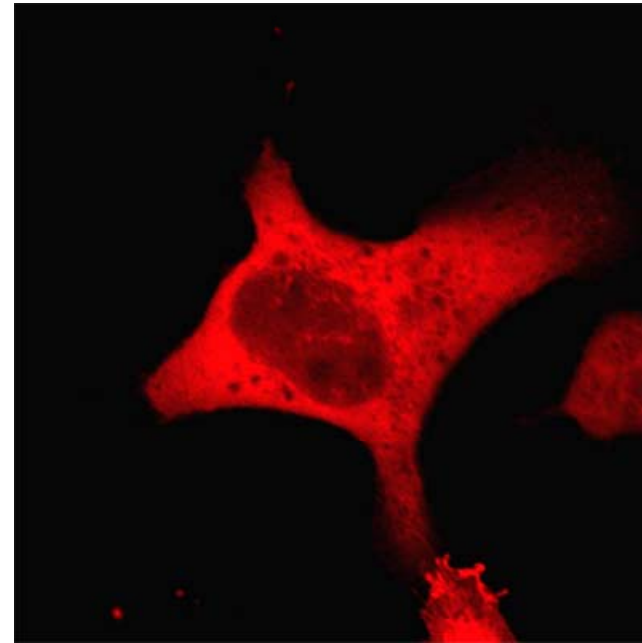


**Membrane**  
(IGF1R-C-RFP)

# Autophagy Related Proteins

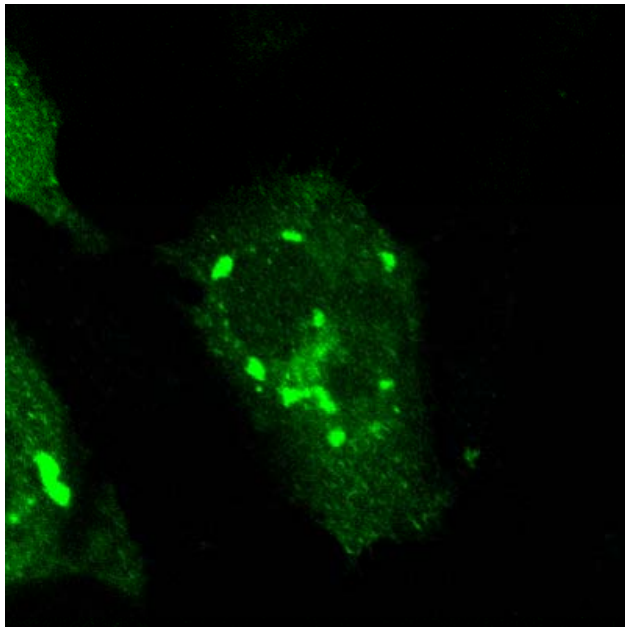


**ATG4**  
(C-GFP)

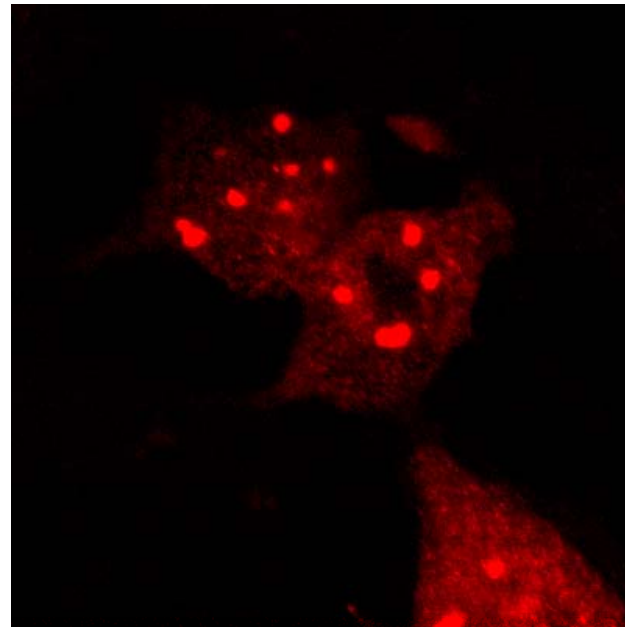


**ATG4**  
(C-RFP)

# Autophagy Related Proteins

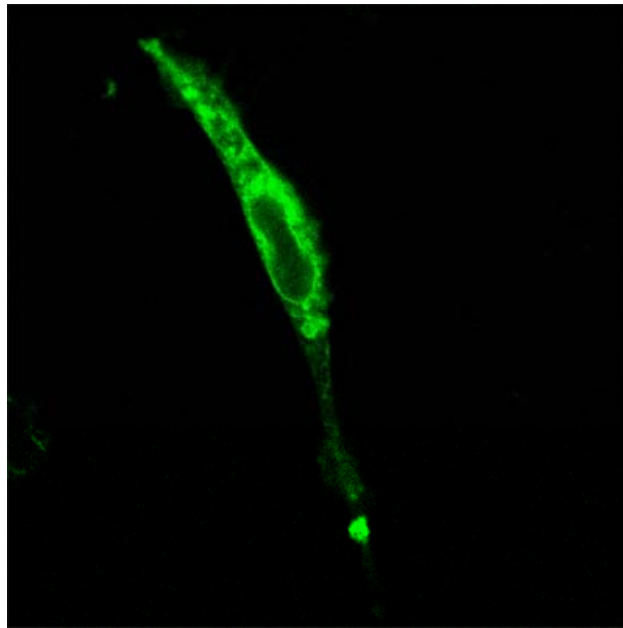


**ATG12**  
(C-GFP)  
Cat#: RC100004

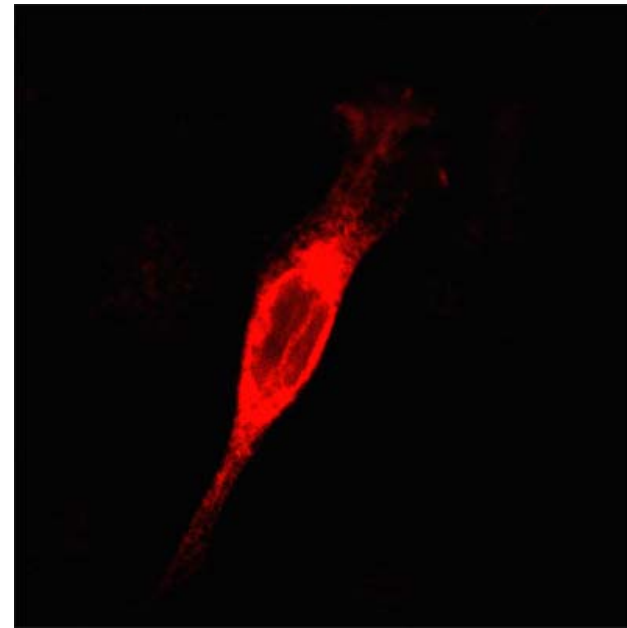


**ATG12**  
(C-RFP)  
Cat#: RC100036

# Other Proteins

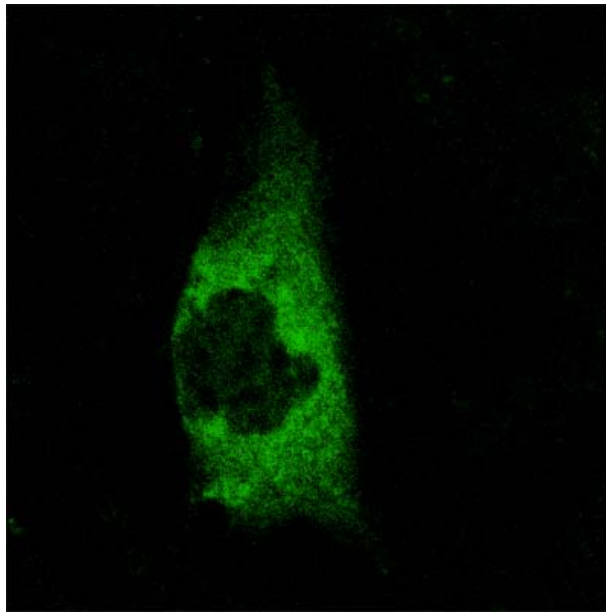


**Integrin B1**  
(C-GFP)

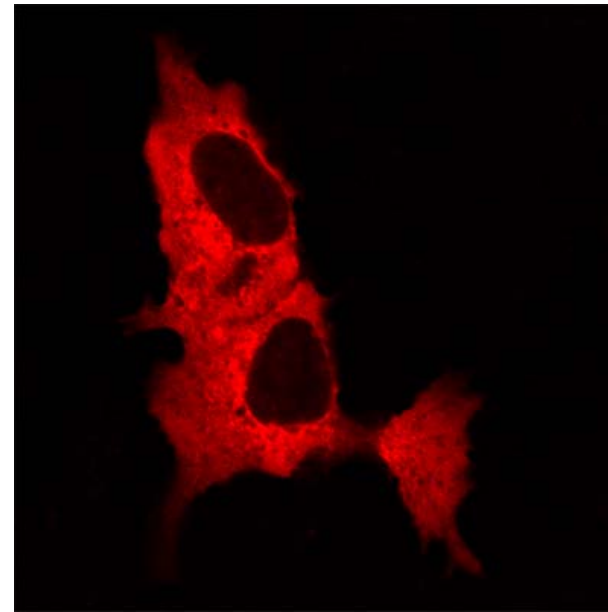


**Integrin B1**  
(C-RFP)

# Other Proteins



**PI3K3C3**  
(C-GFP)



**PI3K3C3**  
(C-RFP)