

ROS1

ROS1 Fusion Protein

5' Fusion Partners

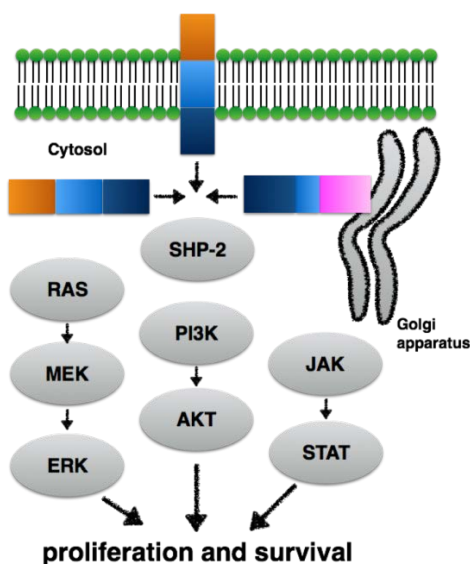
SLC34A2, CD74, SDC4, TPM3, EZR, KDELR2, CCDC6, YWHAE, TFG, CEP85L

FIG (GPCR)

3' ROS1

Variable region (exon 32-35)

Conserved region (kinase domain)



ROS1  TrueMAB™ Antibody

SKU# TA805804

Clone Name OT11A1

Target Homo sapiens ROS proto-oncogene 1, receptor tyrosine kinase (ROS1)

Host Mouse

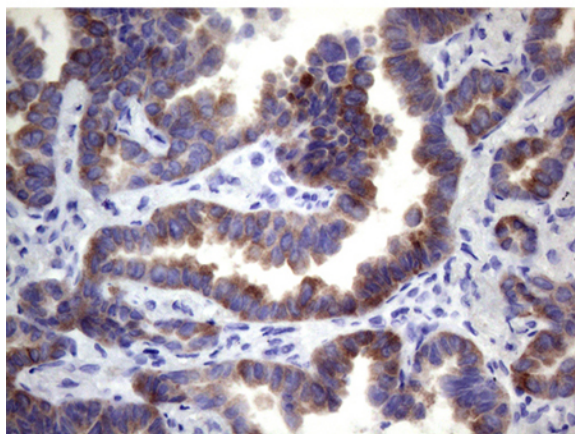
Reactivity Human

Application WB, IHC, IF

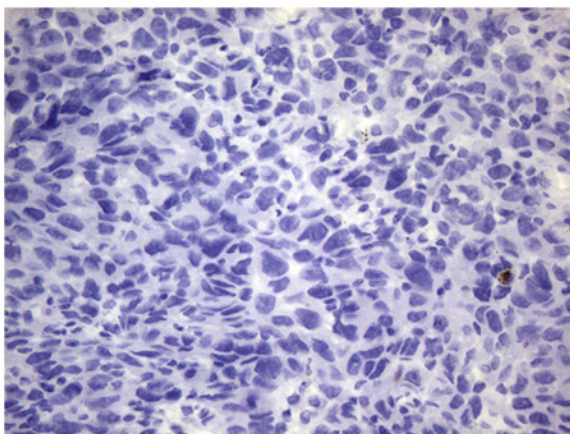
Dilution WB 1:200-1000, IF/ICC 1:5000-10000, IHC 1:500

- ROS1 is a receptor tyrosine kinase that has been demonstrated to undergo genetic rearrangements in a variety of human cancers including glioblastoma, non-small cell lung cancer (NSCLC), ovarian cancer, gastric adenocarcinoma, and colorectal cancer.
- The rearrangement of cancer-related ROS1 fusion proteins activate downstream signaling pathways, including auto-phosphorylation of ROS1 and phosphorylation of SHP-2, MEK, ERK, STAT3, and AKT.
- **New!** On March 11, 2016, FDA approved Xalkori (crizotinib) to treat people with advanced (metastatic) NSCLC whose tumors have an ROS-1 gene alteration.

NSCLC Sample 1#



NSCLC Sample 2#



IHC staining of paraffin-embedded non-small cell lung cancer tissues (Case 1 was ROS1-positive, Case 2 was ROS1-negative) using TA805804 (0.2ug/ml).

OriGene is for Cancer Research!

cDNA Clones · shRNA/siRNA · CRISPR · Antibodies

Antibodies against commonly studied targets related to ROS1

Protein Name	Antibody Description	SKU
AKT1	AKT1 mouse monoclonal antibody, clone OTI4E10	TA504234
AKT2	AKT2 mouse monoclonal antibody, clone OTI4H7	TA500814
AKT3	AKT3 mouse monoclonal antibody, clone OTI9B2	TA500001
ALK	ALK mouse monoclonal antibody, clone OTI1A4	UM800118
CD74	CD74 mouse monoclonal antibody, clone OTI1H3	TA507339
EGFR	EGFR mouse monoclonal antibody, clone UMAB95	UM500070
ERK2	Anti-MAPK1 (ERK2) mouse monoclonal antibody, clone OTI6F8	TA500468
ERK3	MAPK3 (ERK1) mouse monoclonal antibody, clone OTI4D7	TA505700
EZR	Rabbit Polyclonal Anti-EZR Antibody	TA349950
FIG/GOPC	Rabbit Polyclonal FIG/GOPC/PIST Antibody	TA306263
HRAS	HRAS mouse monoclonal antibody, clone OTI1D9	TA505669
JAK1	Rabbit polyclonal JAK1 (Ab-1022) antibody	TA314107
JAK2	Rabbit polyclonal JAK2 (Tyr570) antibody (Phospho-specific)	TA314114
KDEL2	Rabbit polyclonal anti-KDEL2 / ERD22 antibody	TA315138
KRAS	KRAS mouse monoclonal antibody, clone OTI2C1	TA801672
LRIG3	Anti-LRIG3 Rabbit Polyclonal Antibody	TA322013
MEK/MAP2K	MAP2K1 mouse monoclonal antibody, clone OTI4E1	TA506006
PI3K	PIK3CG (PI3K) mouse monoclonal antibody, clone OTI6C6	TA505226
RAF	Rabbit polyclonal Raf1 (Tyr341) antibody (Phospho-specific)	TA313055
SDC4	Rabbit polyclonal Syndecan4 (Ab-179) antibody	TA314520
SHP-1	Rabbit polyclonal SHP-1 (Ab-564) antibody	TA312507
SHP-2	PTPN11 (SHP2) mouse monoclonal antibody, clone OTI3F2	TA501758
STAT5A	STAT5A mouse monoclonal antibody, clone OTI9F7	TA502736
STAT6	Rabbit Polyclonal Anti-STAT6 Antibody	TA349221
TPM3	TPM3 Rabbit Polyclonal Antibody	TA326995

For more antibodies, please visit www.origene.com/antibody/



9620 Medical Center Drive, Suite 200
Rockville, MD 20850
USA

Website <http://www.origene.com>

Phone 1-301-340-3188
1-888-267-4436 (U.S. only)

Email custsupport@origene.com (Customer Support)
techsupport@origene.com (Technical Support)