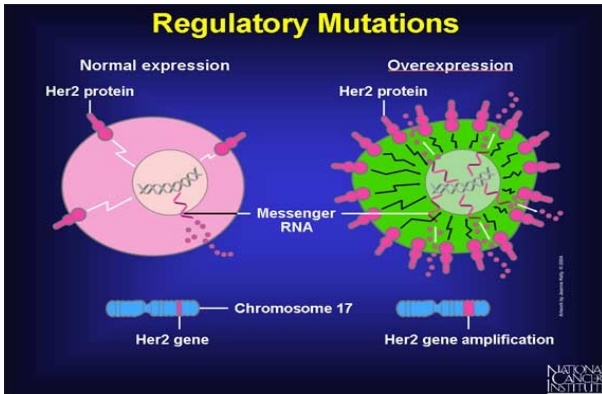


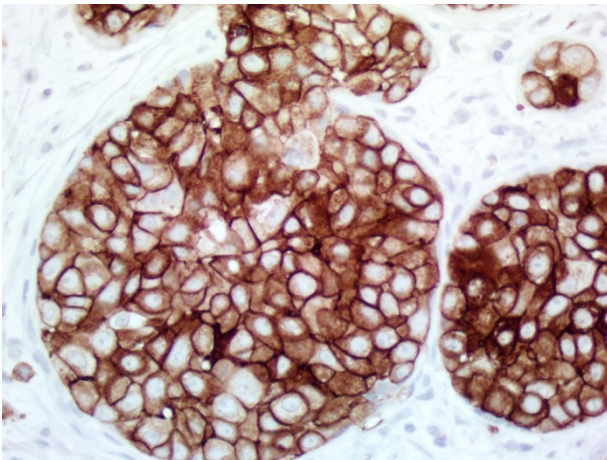
HER2

Regulatory Mutations



HER2 is a receptor tyrosine kinase that is overexpressed in 30% of all breast cancers. The image shows how amplification occurs at the protein and DNA level. Recent studies have linked HER2 overexpression in 29% of gastric cancers, 10% of lung cancers, and 18-61% of uterine cancers.

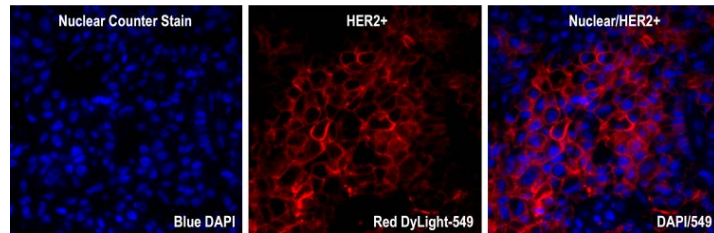
IHC staining for HER2 has become an important method for identifying patients who could respond to HER2 targeting therapies.



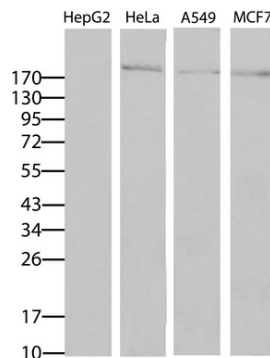
IHC staining of FFPE-embedded human breast cancer tissue using the mouse anti-HER2 (SKU# UM500036) monoclonal antibody diluted 1:100. Strong staining is present on the membrane of this HER2-positive breast cancer.

HER2 UltraMAB[®] Antibody

SKU#	UM500036
Clone Name	UMAB36
Target	Homo sapiens erb-b2 receptor tyrosine kinase 2 (ERBB2), transcript variant 1
Host	Mouse
Reactivity	Human, Mouse, Rat, Monkey
Tested Application	IHC, IF, WB
Dilution	WB: 1:2000, IHC: 1:100 to 1:200, IF: 1:100



Immunofluorescence image of HER2+ breast cancer labeled with HER2 mouse monoclonal antibody clone UMAB36 (red, SKU# UM500036) and DAPI (blue) for nuclear.



Western blot analysis of HepG2, HeLa, A549, and MCF7 cell lines extracts (35ug per lane) using anti-HER2 antibody (clone UMAB36) at 1:500.

OriGene is for Cancer Research!

cDNA Clones · shRNA/siRNA · CRISPR · Antibodies

Antibodies against commonly studied targets related to HER2 or breast cancer

Protein Name	Antibody Description	SKU
CD16 alpha	Rabbit Polyclonal Anti-FCGR3A (CD16 alpha) Antibody	TA350080
CTNNB1	Beta-Catenin (CTNNB1) mouse monoclonal antibody, clone UMAB15	UM500015
EGF	Anti-EGF Rabbit Polyclonal Antibody	TA324063
EGFR	EGFR mouse monoclonal antibody, clone UMAB95	UM500070
EGFR3/HER3	EGFR3/HER3/ERBB3 mouse monoclonal antibody, clone OTI2F11	
EGFR4/HER4	Rabbit Polyclonal Anti-EGFR4/HER4/ERBB4 Antibody	TA349275
ER (ESR1)	ESR1 (Estrogen Receptor 1/ER) mouse monoclonal antibody, clone OTI1B1	TA503759
ERBIN	Anti ERBIN / ERBB2IP / LAP2 (C-term) polyclonal antibody	AP31601PU-N
GRB2	Rabbit Polyclonal Anti-GRB2 Antibody	TA349332
HB-EGF	Anti HBEGF (Center) polyclonal antibody	AP52008PU-N
HSP90AA1	Rabbit polyclonal anti-HSP90AA1(HSP90) antibody, Loading control	TA332385
Ki67	Purified KI67 (MKI67) mouse monoclonal antibody, clone UMAB107	UM800033
LRG1	Rabbit polyclonal anti-LRG1 (A2GL) antibody	TA316028
p38 MAPK	Rabbit Anti-p38 MAPK (Thr180/Tyr182) Antibody (Phospho-Specific)	TA309206
MUC1	MUC1/EMA mouse monoclonal antibody, clone UMAB57	UM800008
NGR1	Rabbit Polyclonal Anti-Nogo (NGR1) Receptor	TA328650
p53	Purified P53 (TP53) mouse monoclonal antibody, clone UMAB62	UM500053
Phospholipase C	Anti-PHOSPHOLIPASE C / PLC polyclonal antibody	AP21376AF-N
PICK1	Rabbit Polyclonal Anti-PICK1 Antibody	TA350769
PICK3R5	PIK3R5 mouse monoclonal antibody, clone OTI5B1	TA505815
PLCG1	Anti-PLCG1 (phospho-Tyr771) Rabbit Polyclonal Antibody	TA322973
PR	PR (PgR) mouse monoclonal antibody, clone UMAB136	UM800037
PTEN	PTEN mouse monoclonal antibody, clone OTI6F10	TA805360
SHC1	Anti-SHC1 (SHC) mouse monoclonal antibody, clone OTI3A1	TA501056
SRC	Rabbit Polyclonal Src (Tyr529) Antibody (Phospho-specific)	TA325880
TGFalpha	Anti-TGFA Rabbit Polyclonal Antibody	TA323258
cd16alpha	Rabbit Polyclonal Anti-FCGR3A (CD16 alpha) Antibody	TA350080

For more antibodies, please visit www.origene.com/antibody/



9620 Medical Center Drive, Suite 200
Rockville, MD 20850
USA

Website <http://www.origene.com>

Phone 1-301-340-3188
1-888-267-4436 (U.S. only)

Email custsupport@origene.com (Customer Support)
techsupport@origene.com (Technical Support)