



GFAP

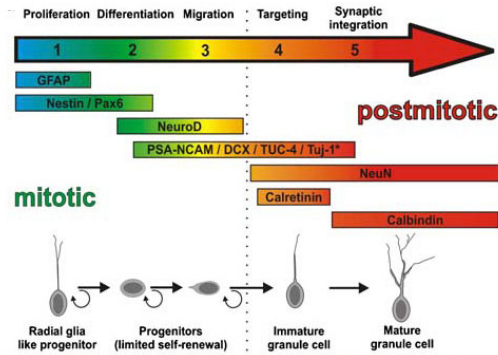
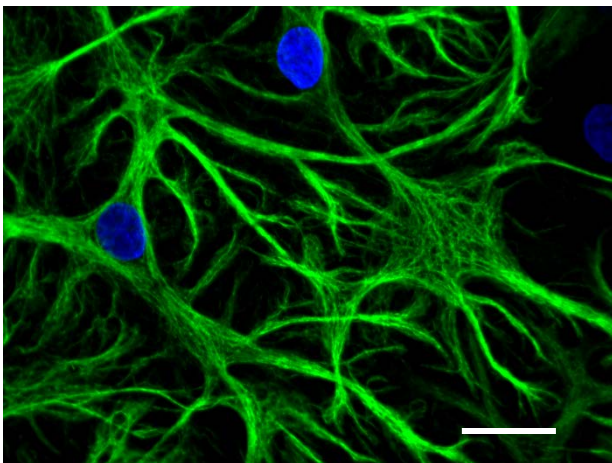


Image reference: www.sites.lafayette.edu/neur401-sp10/methodology/immunohistological-markers/

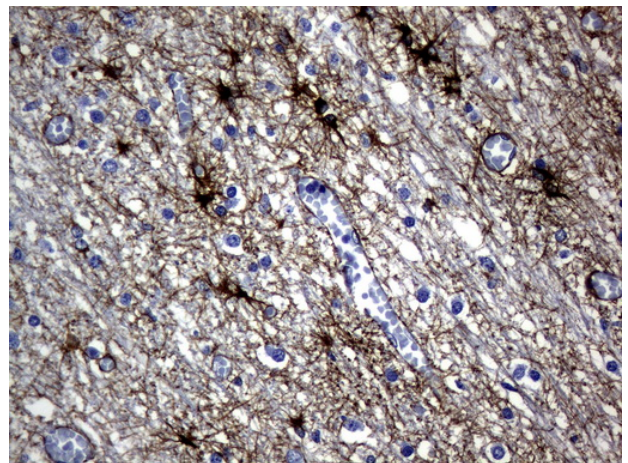
- GFAP is one of the major intermediate filament proteins of mature astrocytes. It is used as a marker to distinguish astrocytes from other glial cells during development.
- Mutations cause Alexander disease, a rare disorder of astrocytes in the central nervous system.

GFAP UltraMAB[®] Antibody

SKU#	UM500094
Target	Homo sapiens glial fibrillary acidic protein (GFAP), transcript variant 1
Host	Mouse
Reactivity	Human, Rat
Tested Application	WB, IHC, IF
Dilution	WB: 1:2000, IHC: 1:100, IF: 1:100



Confocal immunofluorescence image of primary rat neurons labeled with GFAP mouse monoclonal antibody (green) (SKU# UM500094) and DAPI (blue) for nuclear. Scale car, 20 μ m



IHC staining of FFPE human embryonic cerebellum using GFAP mouse monoclonal antibody (SKU# UM500094). For FFPE tissues, HIER pretreatment with citrate pH 6.0 is required. Detection was done with Polink2 HRP for DAB.





OriGene is for Neuroscience!

Lenti Particles · shRNA/siRNA · CRISPR · Antibodies

Antibodies against commonly studied proteins in Neuroscience

Protein Name	Antibody Description	SKU
5-HTT	Rabbit Polyclonal Anti-Serotonin Transporter (SERT) (extracellular)	TA328879
ALDH1L1	ALDH1L1 mouse monoclonal antibody, clone UMAB45	UM500041
GABAA	Rabbit Polyclonal Anti-GABA (B) R1 (extracellular)	TA328819
GABAB	Rabbit Polyclonal Anti-GABA (B) R2	TA328675
GAD65	Rabbit Polyclonal antibody to GAD65	TA308367
GIRK2	Rabbit polyclonal Anti-Kir3.2 (GIRK2)	TA328926
GluR1	Rabbit Polyclonal Anti-AMPA Receptor 1 (GluA1) (extracellular)	TA328823
GluR2	Rabbit Polyclonal Anti-AMPA Receptor 2 (GluA2) (extracellular)	TA328824
vGluT2	vGluT2/SLC17A6 Rabbit Polyclonal Antibody	TA322266
LRRK2	Rabbit Polyclonal LRRK2 Antibody	TA309737
MAP2	Mouse monoclonal MAP2 Antibody	TA324336
N-Cadherin	NCAM1/CD56 mouse monoclonal antibody, clone UMAB194	UM800086
Nestin	Rabbit polyclonal Nestin Antibody (S1409)	TA324694
NeuN	Rabbit Polyclonal RBFOX3/NeuN Antibody	TA309832
NeuroD1	Rabbit polyclonal NeuroD1 Antibody (N-term)	TA324696
Notch1	Anti-Notch1 mouse monoclonal antibody, clone OTI3E12	TA500078
NR1	Rabbit Polyclonal Anti-NMDA Receptor 1 (NR1) (extracellular)	TA328820
NR2B	Rabbit polyclonal NMDAR2B (Tyr1336) antibody(Phospho-specific)	TA313307
Nurr1	Rabbit polyclonal NURR1 (NR4A2) Antibody (N-term)	TA324841
PSD95	PSD95/DLG4 mouse monoclonal antibody, clone OTI12A5	TA809015
SOX1	Rabbit monoclonal antibody against SOX1(clone EPR4766)	TA307867
SOX2	Rabbit Polyclonal Antibody against SOX2 - Embryonic Stem Cell Marker	TA301462
SOX3	Goat Anti-SOX3 Antibody	TA311340
Tau	Rabbit polyclonal TAU Antibody	TA324703
Beta Tubulin	Rabbit polyclonal anti-TUBB(beta Tubulin) antibody, Loading control	TA301569
Vimentin	Vimentin (VIM) mouse monoclonal antibody, clone UMAB160	UM800055

For more antibodies, please visit www.origene.com/antibody/

Acris Antibodies is now part of OriGene

Find your antibody from Acris's offering of over 200,000 products including NeuroMab at

www.acris-antibodies.com

