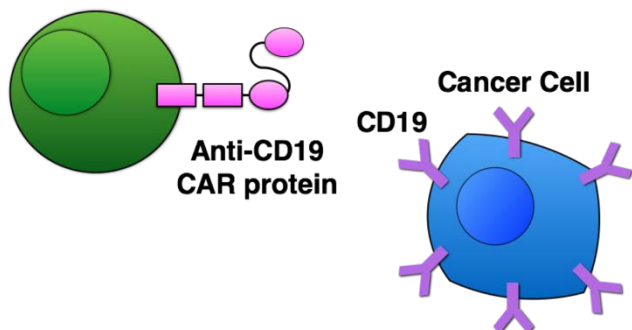


CD19

CAR-expressing T cell

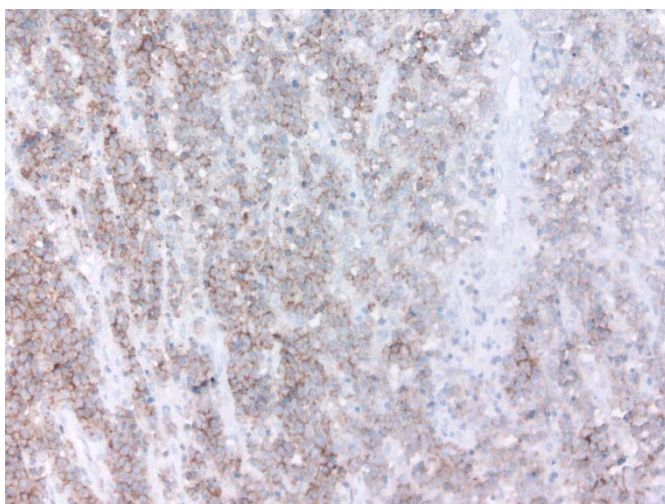


A schematic of an anti-CD19 CAR-expressing T cell recognizing a CD19⁺ malignant cell. CAR, chimeric antigen receptor

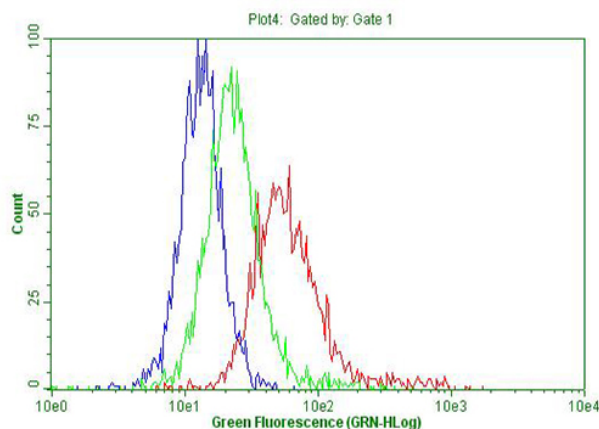
CD19 UltraMAB[®] Antibody

| | |
|--------------------|---|
| SKU# | UM500071 |
| Clone Name | UMAB103 |
| Target | Homo sapiens CD19 molecule (CD19), transcript variant 2 |
| Host | Mouse |
| Reactivity | Human |
| Tested Application | WB, IHC, FC |
| Dilution | IHC: 1:100, FC: 1:50 |

- CD19 is a biomarker for B cell lineage and positively regulates mature B cell antigen receptor signal transduction cascade.
- CD19 has been used to diagnose diseases related to B-cell lymphomas, including Non-Hodgkin lymphomas (NHL), acute lymphoblastic leukemias (ALL), and chronic lymphocytic leukemias (CLL).
- CD19 monoclonal antibody is widely studied for therapies of lymphoma, leukemia and autoimmune disorders, especially in the clinical trials of chimeric antigen receptor (CAR) T-cell therapy.



IHC staining of FFPE human B cell lymphoma tissue using anti-CD19 mouse monoclonal antibody (SKU# UM500071) diluted in 1:200.



Flow cytometric analysis of viable B-Cell Lymphoma cell line (Raji) using anti-CD19 antibody at 1:20 (UM500071, red), compared to isotype control (anti-DDK TA180144, green), and negative control (PBS, blue).

OriGene is for Cancer Research!

cDNA Clones · shRNA/siRNA · CRISPR · Antibodies

Antibodies against commonly studied targets related to CD19 or B cells

| Protein Name | Antibody Description | SKU |
|--------------|---|----------|
| CD20 | Purified CD20 (MS4A1) mouse monoclonal antibody, clone UMAB58 | UM800009 |
| CD21 | Rabbit Polyclonal Anti-CR2 (CD21) Antibody | TA350811 |
| CD22 | CD22 mouse monoclonal antibody, clone OTI4C3 | TA506412 |
| CD22 | CD22 mouse monoclonal antibody, clone OTI4C3 | TA506412 |
| CD24 | Mouse Anti-Human CD24 Purified, Clone eBioSN3 (SN3 A5-2H10) | TA320249 |
| CD25 | Anti-IL2RA (CD25) Rabbit Polyclonal Antibody | TA323669 |
| CD27 | Mouse Anti-Human CD27 Purified, Clone O323 | TA320253 |
| CD38 | CD38 mouse monoclonal antibody, clone OTI1C9 | TA804538 |
| CD3E | CD3E mouse monoclonal antibody, clone UMAB54 | UM500048 |
| CD45R/B220 | PTPRC (CD45R) mouse monoclonal antibody, clone OTI1B7 | TA506054 |
| CD69 | Anti-CD69 Rabbit Polyclonal Antibody | TA321397 |
| CD81 | Rabbit Polyclonal CD81 Antibody | TA306789 |
| CD81 | Rabbit Polyclonal CD81 Antibody | TA306789 |
| CD82 | Rabbit Polyclonal KAI1 (CD82) Antibody | TA306407 |
| CR2 | Rabbit Polyclonal Anti-CR2 Antibody | TA350811 |
| IFN-r | Rabbit polyclonal anti-IFN alpha 2b (IFN-R) antibody | TA319105 |
| IL-10 | ELISA and Luminex validated biotinylated IL-10 Rat monoclonal antibody, clone OTI12G8 | TA700017 |
| IL-2 | Rabbit polyclonal IL-2 antibody Peroxidase Conjugated | TA319284 |
| IL-6 | IL6 mouse monoclonal antibody, clone OTI3G9 | TA500067 |
| Lyn | Rabbit Polyclonal Anti-LYN Antibody | TA350146 |
| SHP-1 | Rabbit polyclonal SHP-1 (Ab-564) antibody | TA312507 |
| TNF-a | TNF mouse monoclonal antibody, clone OTI1C1 | TA506513 |
| VAV2 | Rabbit Polyclonal Anti-VAV2 Antibody | TA351911 |

For more antibodies, please visit www.origene.com/antibody/



9620 Medical Center Drive, Suite 200
Rockville, MD 20850
USA

Website <http://www.origene.com>

Phone 1-301-340-3188
1-888-267-4436 (U.S. only)

Email custsupport@origene.com (Customer Support)
techsupport@origene.com (Technical Support)