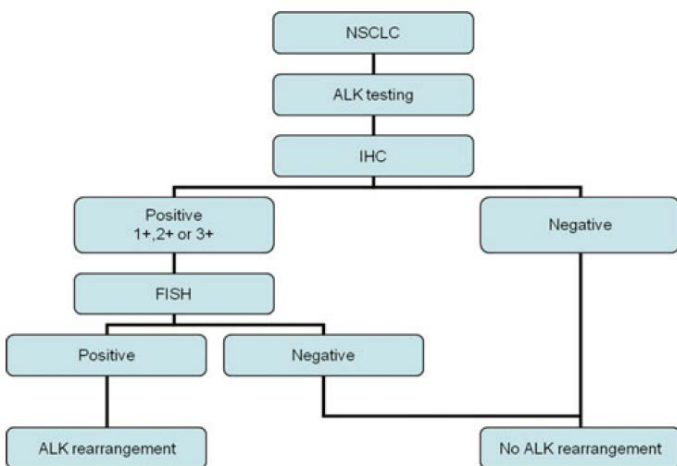


ALK

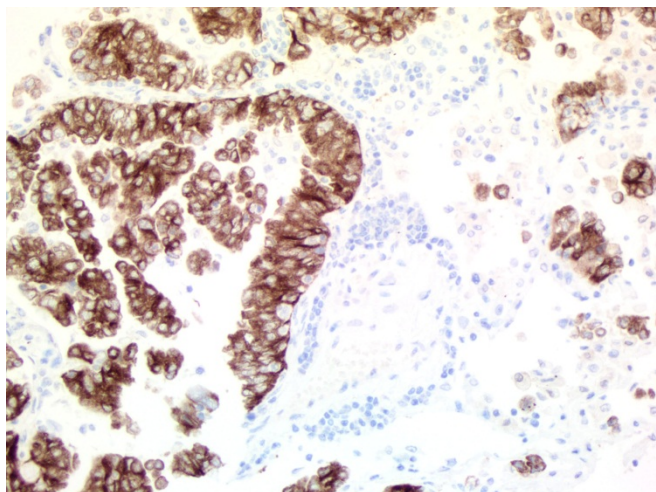


Possible ALK testing algorithm in NSCLC if IHC becomes fully validated. Retrieved from Thunnissen et al., *Virchows Arch*, 2012.

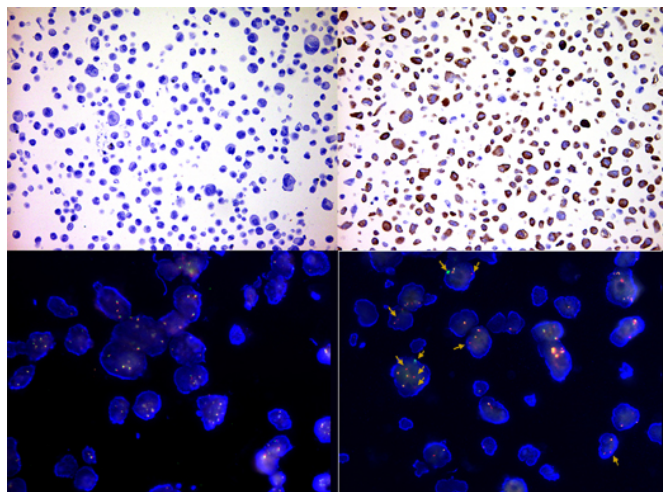
ALK UltraMAB[®] Antibody

SKU#	UM800118
Clone Name	OT11A4
Target	Homo sapiens Anaplastic Lymphoma Receptor Tyrosine Kinase (ALK)
Host	Mouse
Reactivity	Human
Tested Application	WB, IHC, Luminex
Dilution	WB: 1:2000, IHC: 1:100 to 1:200

- ALK is a receptor tyrosine kinase, which belongs to the insulin receptor superfamily. The ALK gene has been found to be rearranged, mutated, or amplified in a series of tumors including anaplastic large cell lymphomas, neuroblastoma, and non-small cell lung cancer (NSCLC).
- ALK-specific antibody has been widely used in ALK rearrangement IHC studies, together with FISH and RT-PCR, to determine ALK rearrangement-positive samples in NSCLC.



IHC staining of paraffin-embedded human ALK-positive lung cancer tissue using anti-ALK mouse monoclonal antibody (UM800118, 1:100 for 30 min at RT; heat-induced epitope retrieval by TEE, pH9.0).



IHC staining of paraffin-embedded human cell line H1975 (upper left) and H2228 (upper right) using anti-ALK monoclonal antibody UM800118 (1:400). The ALK rearrangement in H2228 cells is labeled with ALK Break apart probe in FISH test (lower right, 60X) and the control of H1975 cell at the same FISH probe test (lower left, 60X).

OriGene is for Cancer Research!

cDNA Clones · shRNA/siRNA · CRISPR · Antibodies

Antibodies against commonly studied cancer biomarkers and important targets

Protein Name	Antibody Description	SKU
AFP	AFP mouse monoclonal antibody, clone UMAB66	UM500056
CA 125	CA125 (MUC16) mouse monoclonal antibody, clone OTI3B6	TA801281
CA 19-9	CA19-9 mouse monoclonal antibody, clone NS19-9	TA190083
CA 50	Anti CA50 monoclonal antibody, clone93	AM09238PU-N
CEA	CEA (CEACAM5) mouse monoclonal antibody, clone OTI1C2	TA803415
CSTB	Rabbit Polyclonal Cystatin B Antibody	TA351119
EGFR	EGFR mouse monoclonal antibody, clone UMAB95	UM500070
ERCC1	ERCC1 mouse monoclonal antibody, clone 4F9	UM500008
ESR1 (ER)	ESR1 (Estrogen Receptor 1/ER) mouse monoclonal antibody, clone OTI1B1	TA503759
FGF21	FGF21 mouse monoclonal antibody, clone UMAB71	UM500059
GOLM1	GOLM1 mouse monoclonal antibody, clone OTI4B12	TA504112
HER2	Purified HER2 (ERBB2) mouse monoclonal antibody, clone UMAB36	UM500036
HGF	HGF mouse monoclonal antibody, clone OTI2F3	TA807186
HLA-G/B2M	Rabbit polyclonal HLA-G Antibody (Center)	TA325084
IGFBP2	IGFBP2 mouse monoclonal antibody, clone OTI1A7	TA504413
IL6	IL6 mouse monoclonal antibody, clone OTI3G9	TA500067
Ki67	Purified Ki67 (MKI67) mouse monoclonal antibody, clone UMAB107	UM800033
LGR5	LGR5 mouse monoclonal antibody, clone UMAB212	UM800104
p53	Purified P53 (TP53) mouse monoclonal antibody, clone UMAB62	UM500053
PD-1	PD-1 (PDCD1) mouse monoclonal antibody, clone UMAB199	UM800091
PD-L1	PD-L1 / CD274 mouse monoclonal antibody, clone OTI2C7	TA507087
PIK3CA	PIK3CA mouse monoclonal antibody, clone OTI6D9	TA801592
ROS1	ROS1 mouse monoclonal antibody, clone OTI1A1	TA805804
SERPINB3	SERPINB3 mouse monoclonal antibody, clone OTI3C2	TA502259
TGFB1	TGFB1 mouse monoclonal antibody, clone OTI1E12	TA506585
TUBB2	Tubulin, beta 2A class IIa (TUBB2A) mouse monoclonal antibody, clone OTI3E6	TA506590
VEGF	VEGFA (VEGF) mouse monoclonal antibody, clone OTI4E3 (formerly 4E3)	TA500289
XRCC1	XRCC1 mouse monoclonal antibody, clone UMAB40	UM500037

For more antibodies, please visit www.origene.com/antibody/



9620 Medical Center Drive, Suite 200
Rockville, MD 20850
USA

Website <http://www.origene.com>

Phone 1-301-340-3188
1-888-267-4436 (U.S. only)

Email custsupport@origene.com (Customer Support)
techsupport@origene.com (Technical Support)