

# Prestained Protein Ladder

(12-122 kDa)

**SKU: TP790027**     250ul

**LOT:**

**Storage:** Stable at 4°C for up to 1 week.

For long term storage, store at -20°C. Avoid repeated freeze-thaw cycles.



## ***Description***

Prestained Protein Ladder is a mixture of 9 recombinant purified and prestained polypeptides between 12 and 122 kDa when electrophoresed.

The covalent coupling of the dye to the proteins affects their electrophoretic behavior in SDS-PAGE gels relative to unstained proteins. The apparent molecular weight of the prestained proteins are given in the gel image below.

The ladder is supplied in gel loading buffer and is ready-to-use: no heating, further dilution or addition of a reducing agent is required.

## ***Contents***

Concentration: 0.1–0.2 mg/ml of each protein

Storage Buffer: 25mM Tris-base, 192 mM Glycine, 1 mM EDTA, 0.1% SDS and 20% Glycerol, pH8.0.

## ***Applications***

- Monitoring protein separation during SDS-polyacrylamide gel electrophoresis
- Monitoring protein transfer onto membranes after Western blotting
- Sizing of proteins on SDS-polyacrylamide gels and Western blots

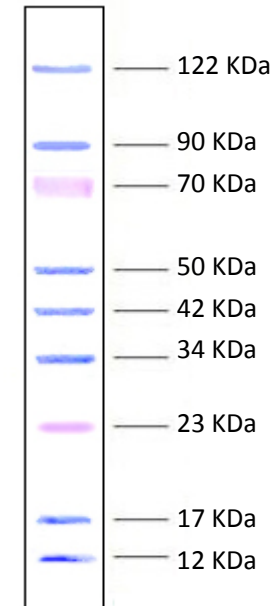
### ***Instruction for Use***

1. Thaw the ladder at room temperature for a few minutes to dissolve precipitated solids.
2. Mix gently, but thoroughly, to ensure the solution is homogeneous.
3. Load the following volumes of the ladder on an SDS-polyacrylamide gel.
  - Recommended Load: 3-4  $\mu$ l
  - Loading volumes are intended for use in gels with a thickness of 1.0 mm. For thicker gels, the recommended loading volume should be increased.
4. After the run is complete, stain the gel or perform Western transfer procedure as desired.

### **Quality Control**

5  $\mu$ l of Page Protein Ladder resolves 9 bands of equal intensities in 8-20% SDS-PAGE (Tris-glycine buffer).

### **Prestained Protein Ladder (12-122 kDa)**



**8-20% Tris-glycine SDS-PAGE**

---

This product is to be used for laboratory only. Not for diagnostic or therapeutic use.