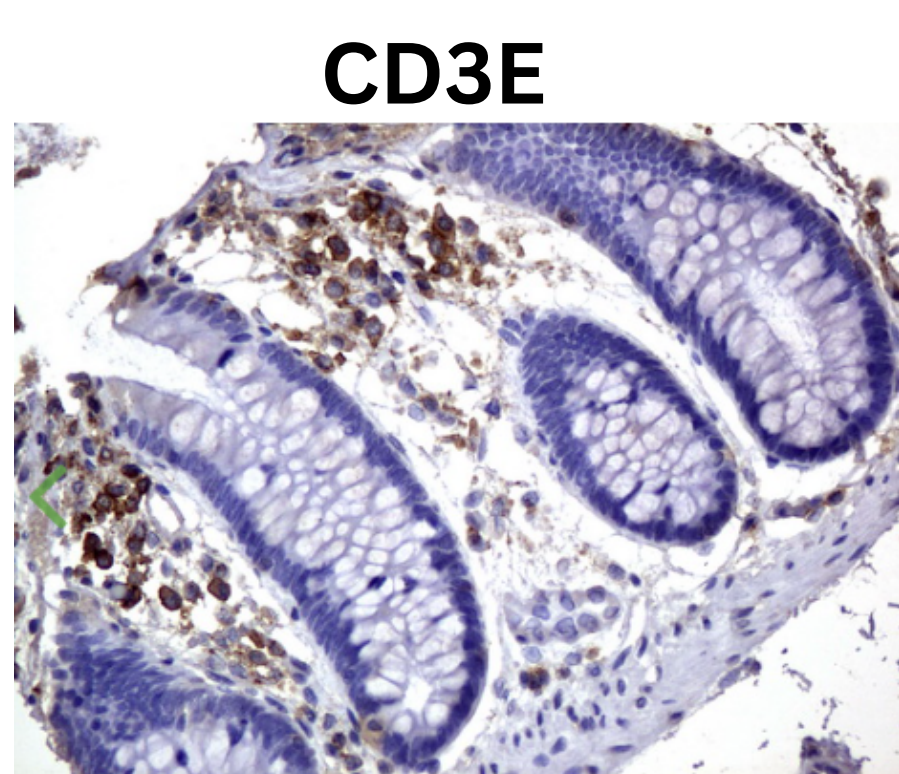


Regulatory T-Cells (Tregs)

Harnessing the Power of Tregs

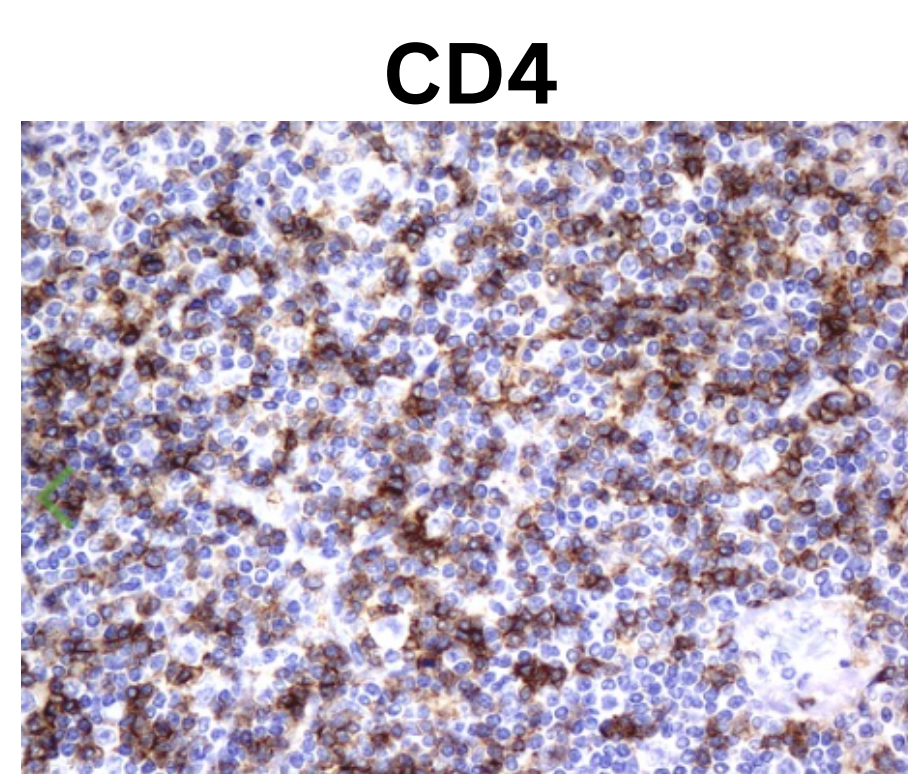
Regulatory T cells (Tregs) are lymphocytes that control the biological phenomenon of self-non-self-discrimination, preventing auto-immune diseases. These cells, which express CD4+CD25+ surface markers are the key regulators of immune response and play a critical role in immune tolerance and homeostasis.

Popular Tregs Markers



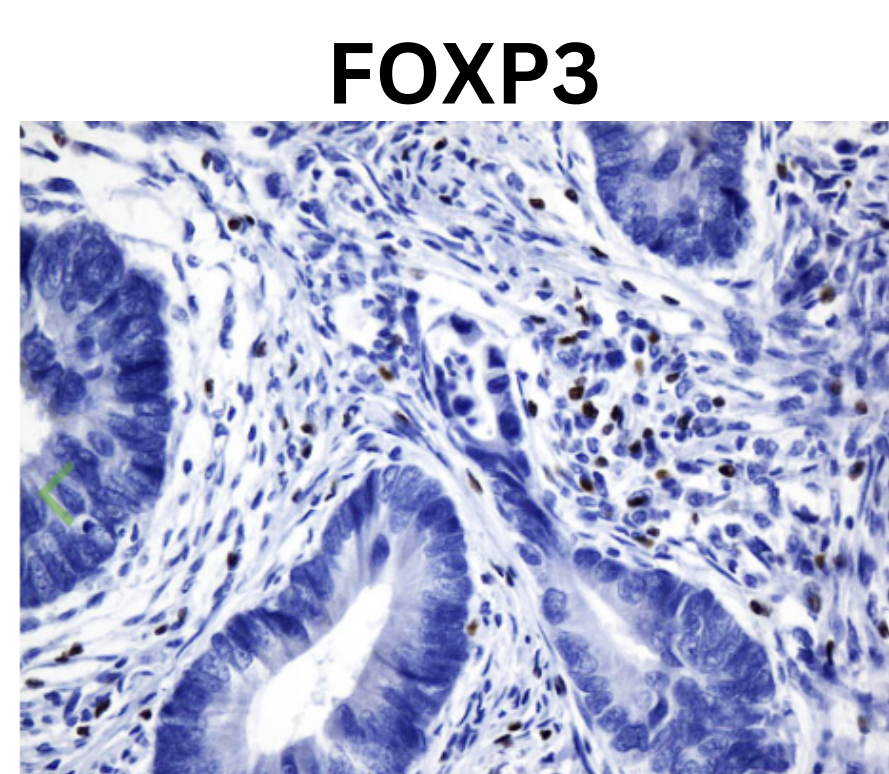
IHC staining of human colon tissue using anti-CD3E

UM570048



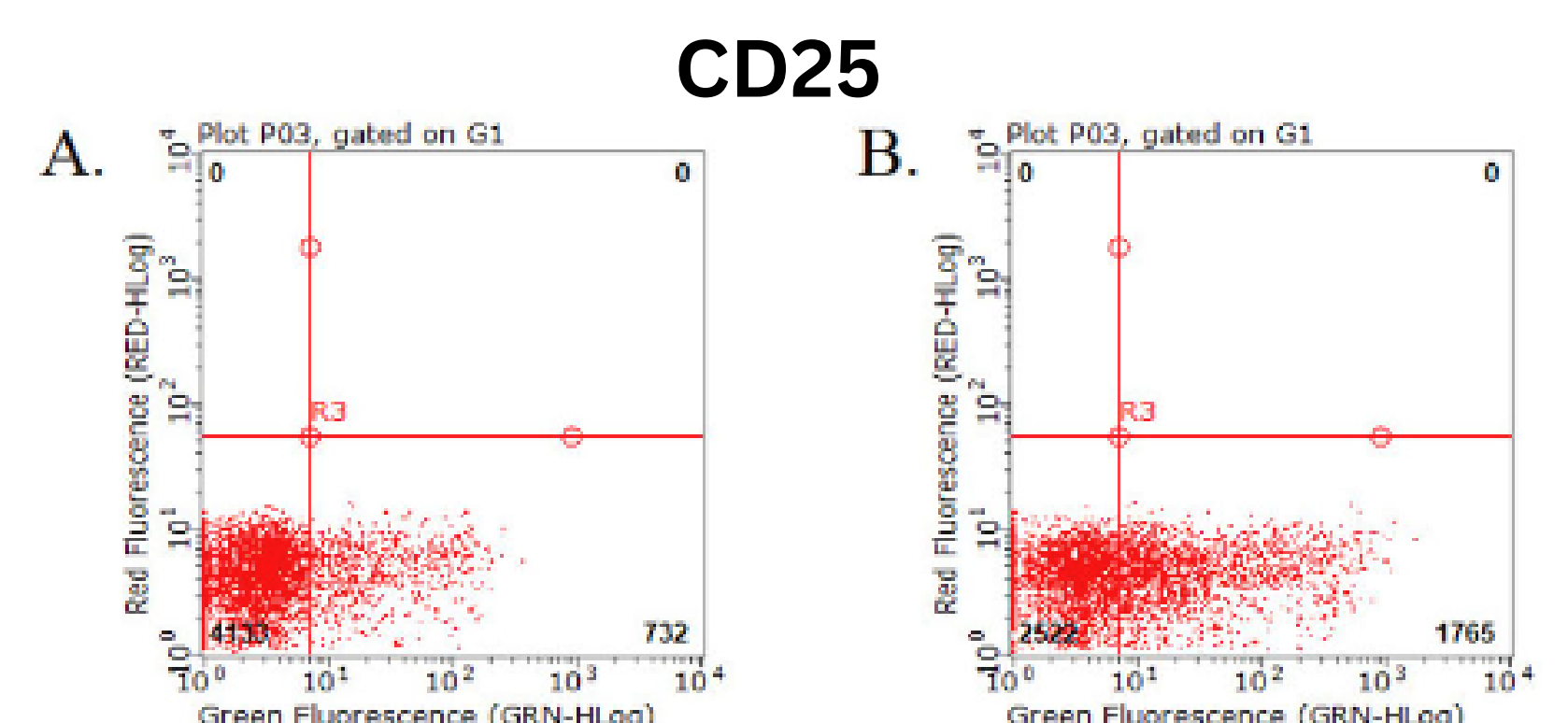
IHC staining of human lymphoma tissue using anti-CD4

UM870010



IHC staining of human colon tissue using anti-FOXP3

UM870140

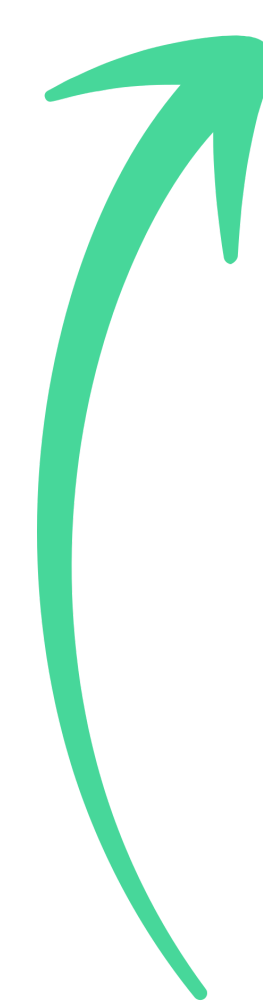


Flow cytometric analysis of living PBMCs treated with 10ug/ml PHA for 72h (Right)/untreated (Left) using anti-IL2RA antibody

TA813473S

Additional Tregs Markers

Target	Reactivity	Application	SKU
CD5	Human	FC, IHC, WB	TA802427S
CD19	Human	IF, IHC, WB, FC	TA506236S
CD14	Human	FC, IHC, WB	TA811528S
CTLA4	Human	IHC	UM870141
IL10	Human	ELISA	TA700017
TGF-B	Human	FC, IHC, WB	TA506583
FOLR4	Human	WB	TA357530
CD39	Human	IHC, WB	TA804559S
CD40	Human	FC, IHC, WB	TA807082S



SCAN ME

Get a sampler antibody kit for Tregs, scan the code or, contact our tech support team at techsupport@origene.com