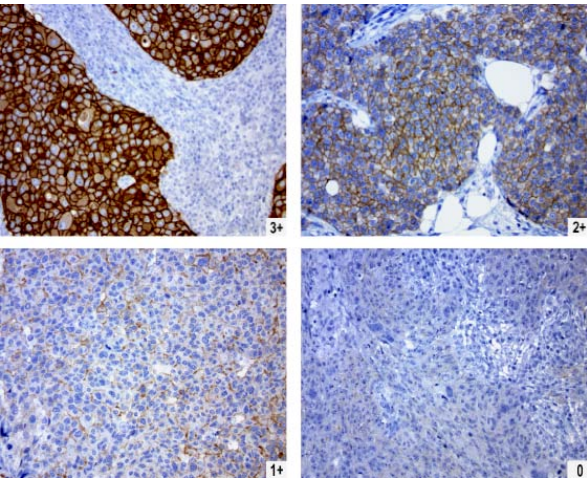


HER2 UltraMAB® Antibody

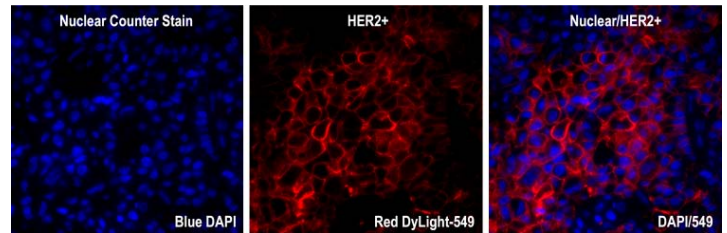
| | |
|---------------------------|--|
| SKU# | UM500036 (100ul) & UM570036 (30ul) |
| Clone Name | UMAB36 |
| Target | Homo sapiens erb-b2 receptor tyrosine kinase 2 (ERBB2), transcript variant 1 |
| Host | Mouse |
| Reactivity | Human, Mouse, Rat, Monkey |
| Tested Application | IHC, IF, WB |
| Dilution | WB: 1:500, IHC: 1:100, IF: 1:100 |

Cartoon depicting HER2 amplification at the protein and DNA level. HER2 gene encodes a member of the epidermal growth factor (EGF) receptor family of receptor tyrosine kinases.

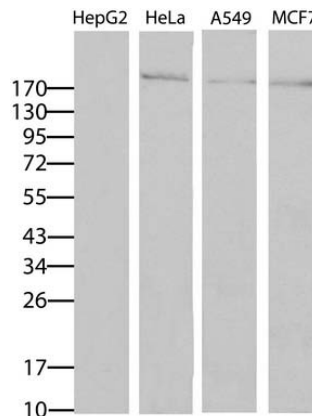
- HER2 over-expression occurs in
- 10-30% of all breast cancers
 - 29% of gastric cancers
 - 10% of lung cancers
 - 18-61% of uterine cancers



The four panels show different levels of HER2 expression in FFPE human breast cancer. IHC was done on a breast cancer tissue microarray using mouse anti-HER2 clone UMAB36 (SKU# UM500036) monoclonal antibody (1:100). Anti-HER2 clone UMAB36 requires HIER pretreatment with Tris/EDTA pH 8.5 buffer for optimal staining. HER2 expression levels were evaluated by a board certified pathologist.



Immunofluorescence image of FFPE HER2+ breast cancer labeled with HER2 mouse monoclonal antibody clone UMAB36 (red, SKU# UM500036) and DAPI (blue) for nuclear staining.



Western blot analysis of HepG2, HeLa, A549, and MCF7 cell lines extracts (35ug per lane) using anti-HER2 antibody (clone UMAB36) at 1:500.

Antibodies against commonly studied targets related to HER2 or breast cancer

| Protein Name | Antibody Description | SKU |
|-----------------|---|-------------|
| CD16 alpha | Rabbit Polyclonal Anti-FCGR3A (CD16 alpha) Antibody | TA350080 |
| CTNNB1 | Beta-Catenin (CTNNB1) mouse monoclonal antibody, clone UMAB15 | UM500015 |
| EGF | Anti-EGF Rabbit Polyclonal Antibody | TA324063 |
| EGFR | EGFR mouse monoclonal antibody, clone UMAB95 | UM500070 |
| EGFR3/HER3 | EGFR3/HER3/ERBB3 mouse monoclonal antibody, clone OTI2F11 | |
| EGFR4/HER4 | Rabbit Polyclonal Anti-EGFR4/HER4/ERBB4 Antibody | TA349275 |
| ER (ESR1) | ESR1 (Estrogen Receptor 1/ER) mouse monoclonal antibody, clone OTI1B1 | TA503759 |
| ERBIN | Anti ERBIN / ERBB2IP / LAP2 (C-term) polyclonal antibody | AP31601PU-N |
| GRB2 | Rabbit Polyclonal Anti-GRB2 Antibody | TA349332 |
| HB-EGF | Anti HBEGF (Center) polyclonal antibody | AP52008PU-N |
| HSP90AA1 | Rabbit polyclonal anti-HSP90AA1(HSP90) antibody, Loading control | TA332385 |
| Ki67 | Purified KI67 (MKI67) mouse monoclonal antibody, clone UMAB107 | UM800033 |
| LRG1 | Rabbit polyclonal anti-LRG1 (A2GL) antibody | TA316028 |
| p38 MAPK | Rabbit Anti-p38 MAPK (Thr180/Tyr182) Antibody (Phospho-Specific) | TA309206 |
| MUC1 | MUC1/EMA mouse monoclonal antibody, clone UMAB57 | UM800008 |
| NGR1 | Rabbit Polyclonal Anti-Nogo (NGR1) Receptor | TA328650 |
| p53 | Purified P53 (TP53) mouse monoclonal antibody, clone UMAB62 | UM500053 |
| Phospholipase C | Anti-PHOSPHOLIPASE C / PLC polyclonal antibody | AP21376AF-N |
| PICK1 | Rabbit Polyclonal Anti-PICK1 Antibody | TA350769 |
| PICK3R5 | PIK3R5 mouse monoclonal antibody, clone OTI5B1 | TA505815 |
| PLCG1 | Anti-PLCG1 (phospho-Tyr771) Rabbit Polyclonal Antibody | TA322973 |
| PR | PR (PgR) mouse monoclonal antibody, clone UMAB136 | UM800037 |
| PTEN | PTEN mouse monoclonal antibody, clone OTI6F10 | TA805360 |
| SHC1 | Anti-SHC1 (SHC) mouse monoclonal antibody, clone OTI3A1 | TA501056 |
| SRC | Rabbit Polyclonal Src (Tyr529) Antibody (Phospho-specific) | TA325880 |
| TGFalpha | Anti-TGFA Rabbit Polyclonal Antibody | TA323258 |
| cd16alpha | Rabbit Polyclonal Anti-FCGR3A (CD16 alpha) Antibody | TA350080 |

For more antibodies, please visit
www.origene.com/products/antibodies