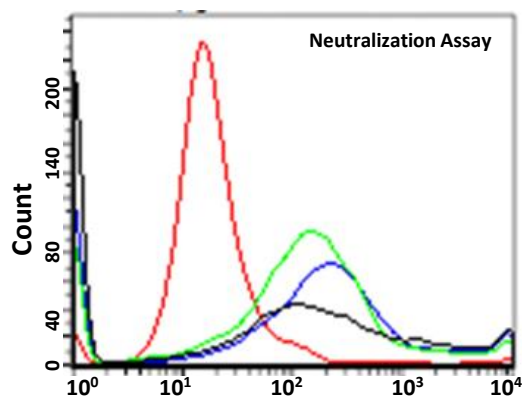


Flow Antibodies for I-O Targets



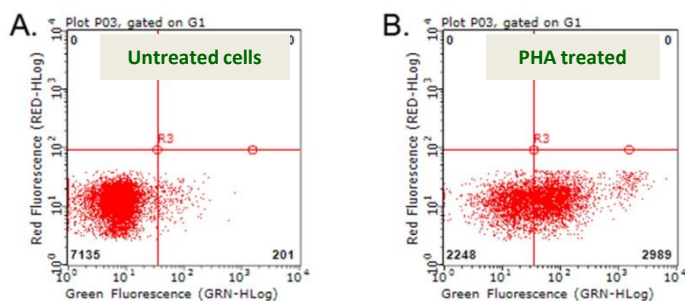
Key Features:

- Mouse monoclonal antibodies
- Validated for live cell Flow Cytometry (FC)

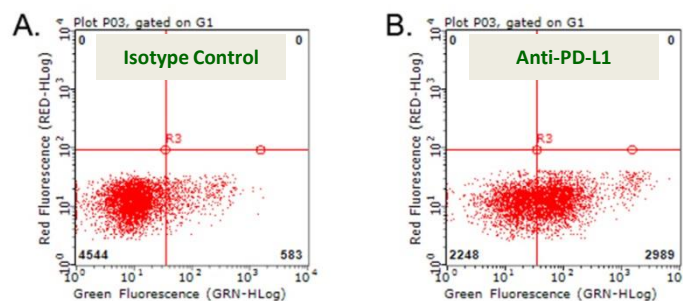


**PD-L1 (CD274) , SKU# TA809809
validated in neutralization assay
& live cell FC**

Neutralizing assay: GFP+/PDL1+ cells were incubated with either PD-L1 ab (red), control ab (green), isotype control (blue) or PBS (black), and then pulled down by PD1+ cells. GFP+/PDL1+ cells can't be collected when PD1/PDL1 interaction is blocked by PD-L1 ab.

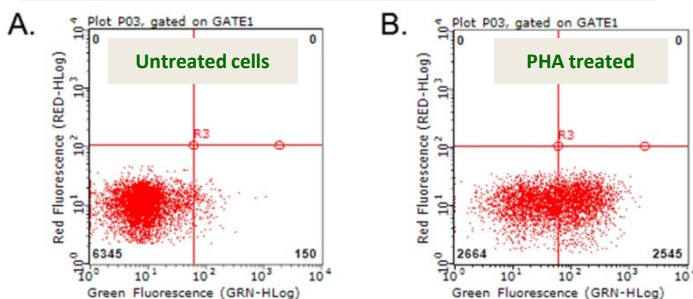


FC analysis of living PBMCs using anti-PD-L1 antibody (1:100)

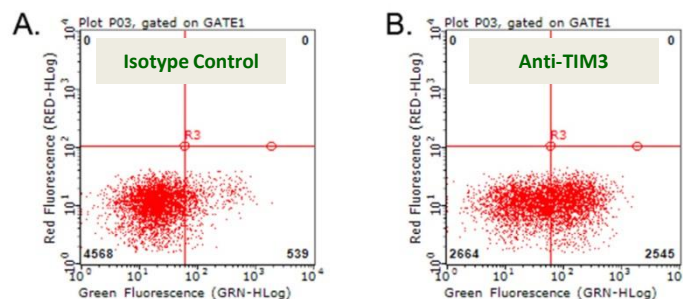


FC analysis of Living PBMCs treated with 10ug/ml PHA for 72 hours

TIM3 (HAVCR2) , SKU# TA812578



FC analysis of living PBMCs using anti-TIM3 antibody (1:100).



FC analysis of Living PBMCs treated with 10ug/ml PHA for 72 hours

Antibodies that work for live cell FC

Flow antibodies for I-O targets

Target Name	Flow Ab SKU#
PD-L1	TA809809
CD4	TA800532
TIM3	TA812578
CD8A	TA802376
OX40	UM800166
CD45	TA506056
CD27	TA812551
TNFRSF8	TA801647
BTLA	TA812587
LAG3	TA807180
ICOS	TA813209
CD137	TA813093
TIGIT	TA813032
CD47	TA813269
CD70	TA813206
TNFRSF18	TA806459
CD3	TA807198
CD19	UM500071

For more Flow antibodies against I-O targets, please visit
[https://www.origene.com/IO flow abs](https://www.origene.com/IO_flow_abs)