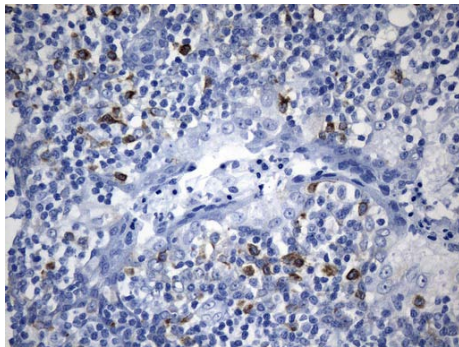
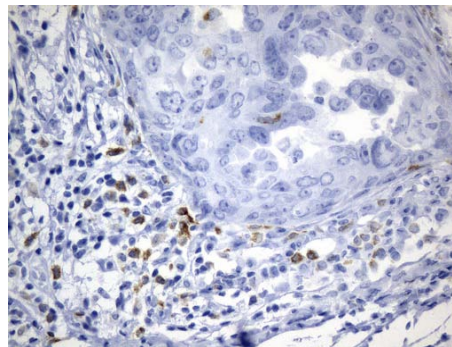
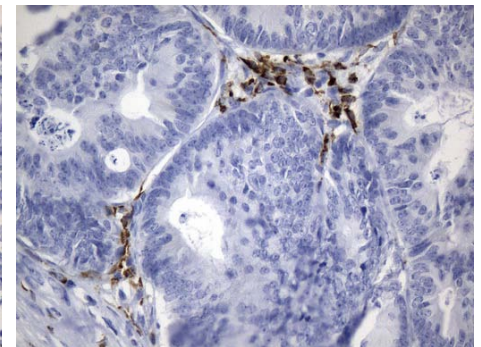


CTLA4 Inhibits T-Cell Proliferation

**CTLA4 UltraMAB® Antibody**

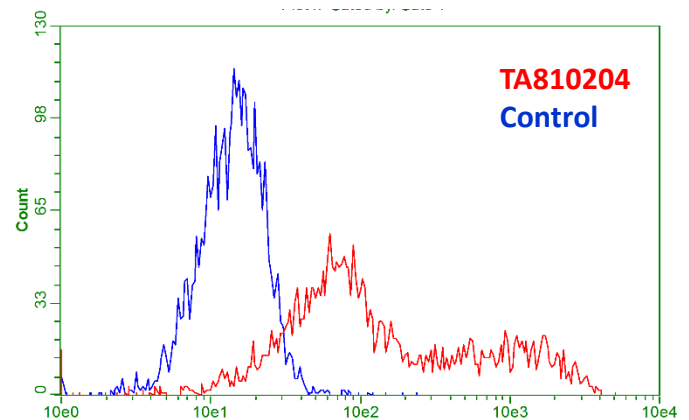
<b>SKU#</b>	UM800141
<b>Clone Name</b>	UMAB249
<b>Target</b>	Cytotoxic T-Lymphocyte Associated Protein 4
<b>Host</b>	Mouse
<b>Reactivity</b>	Human
<b>Tested Application</b>	IHC

**Tonsil****Breast Cancer****Colon Cancer**

CTLA4 antibody (UM800141) diluted 1:200; pretreatment required HIER TRIS/EDTA pH 8.5 buffer.

**CTLA4 TrueMAB™ Antibody**

<b>SKU#</b>	TA810204
<b>Clone Name</b>	OT18F1
<b>Target</b>	Cytotoxic T-Lymphocyte Associated Protein 4
<b>Host</b>	Mouse
<b>Reactivity</b>	Human
<b>Tested Application</b>	WB, Flow



HEK293T cells transfected with either CTLA4 (RC210150) plasmid (Red) or empty vector control plasmid (Blue). The cells were immuno-stained by anti-CTLA4 antibody and analyzed by flow cytometry. (1:100)

## Antibodies against commonly studied proteins in cancer immunotherapy

Protein Name	Antibody Description	SKU
ARG1	ARG1 mouse monoclonal antibody, clone OTI4E6	TA502413
B7-1/CD80	CD80 mouse monoclonal antibody, clone UMAB65	UM500055
B7-H3/CD276	Rabbit Polyclonal CD276 Antibody	TA590443
B7-H4/VTCN1	Anti-VTCN1 mouse monoclonal antibody	TA318347
BTLA	BTLA mouse monoclonal antibody, clone UMAB61	UM500052
CD160	Rabbit Polyclonal Anti-CD160 Antibody	TA349762
CD19	CD19 mouse monoclonal antibody, clone UMAB103	UM500071
CD244	Rabbit Polyclonal Anti-CD244 Antibody	TA349773
IDO1	IDO1 mouse monoclonal antibody, clone UMAB126	UM500091
IL-10	IL10RA mouse monoclonal antibody, clone OTI1D10	TA506929
IL-13	IL13 mouse monoclonal antibody, clone OTI6D3	TA804004
IL-4	Rabbit polyclonal IL4 Antibody (C-term)	TA324803
LAG3	LAG3 mouse monoclonal antibody, clone OTI8F6	TA807082
MICA	Rabbit Polyclonal MICA Antibody	TA306443
MICB	anti MIC-B monoclonal antibody, cloneB-D55	AM31286AF-N
N-Cadherin	NCAM1/CD56 mouse monoclonal antibody, clone UMAB194	UM800086
Notch1	Anti-Notch1 mouse monoclonal antibody, clone OTI3E12	TA500078
PD-1	PD-1 (PDCD1) mouse monoclonal antibody, clone UMAB198	UM800090
PD-L1	CD274 mouse monoclonal antibody, clone OTI13G7	TA809809
PD-L2	PDCD1LG2 mouse monoclonal antibody, clone OTI5A7	TA808997
SOX2	Rabbit Polyclonal Antibody against SOX2 - Embryonic Stem Cell Marker	TA301462
TIM3	HAVCR2 mouse monoclonal antibody, clone OTI2E2	TA807034
Beta Tubulin	Rabbit polyclonal anti-TUBB(beta Tubulin) antibody, Loading control	TA301569
Vimentin	Vimentin (VIM) mouse monoclonal antibody, clone UMAB160	UM800055

For more antibodies, please visit  
[www.origene.com/products/antibodies](http://www.origene.com/products/antibodies)