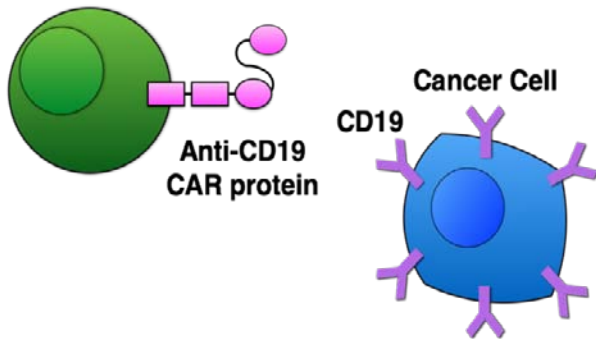
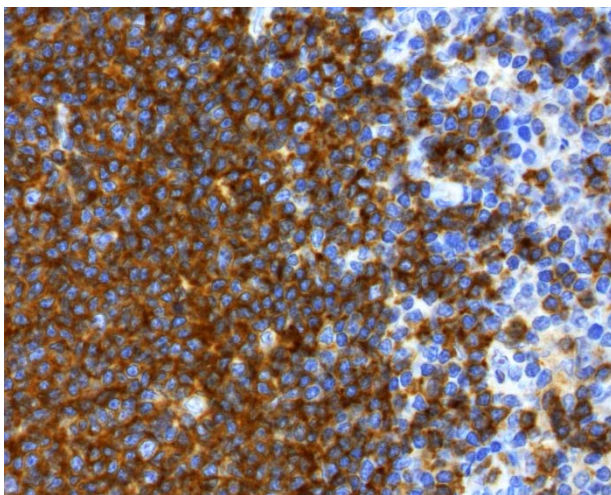


CAR-expressing T cell



A schematic of an anti-CD19 CAR-expressing T-cell recognizing a CD19⁺ malignant cell. CAR, chimeric antigen receptor

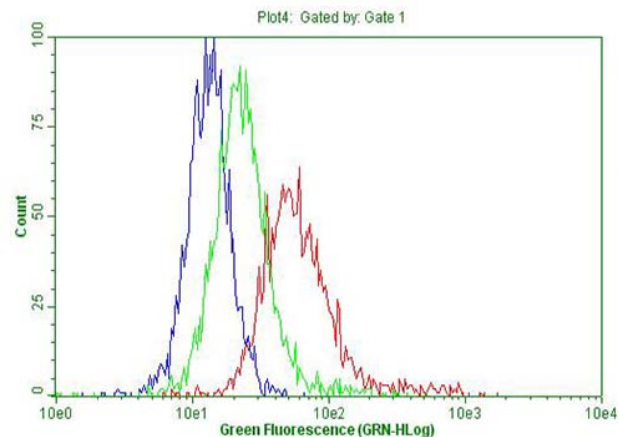
- CD19 is a biomarker for B cell lineage and positively regulates mature B cell antigen receptor signal transduction cascade.
- CD19 has been used to diagnose diseases related to B-Cell Lymphomas, including Non-Hodgkin lymphomas (NHL), acute lymphoblastic leukemia (ALL), and chronic lymphocytic leukemia (CLL).
- CD19 monoclonal antibody is widely studied for therapies of lymphoma, leukemia and autoimmune disorders, especially in the clinical trials of chimeric antigen receptor (CAR) T-cell therapy.



IHC staining of FFPE human B-Cell Lymphoma using anti-CD19 mouse monoclonal antibody (SKU# UM500071; heat-induced epitope retrieval by 10mM citric buffer, pH6.0, 120°C for 3min).

CD19 UltraMAB® Antibody

SKU#	UM500071 (100ul) &UM570071 (30ul)
Clone Name	UMAB103
Target	Homo sapiens CD19 molecule (CD19), transcript variant 2
Host	Mouse
Reactivity	Human
Tested Application	WB, IHC, FC
Dilution	WB: 1:500, IHC: 1:200, FC: 1:50



Flow cytometric analysis of viable B-Cell Lymphoma cell line (Raji) using anti-CD19 antibody at 1:20 (UM500071, red), compared to isotype control (anti-DDK TA180144, green), and negative control (PBS, blue).

Antibodies against commonly studied targets related to CD19

Protein Name	Antibody Description	SKU
CD20	Purified CD20 (MS4A1) mouse monoclonal antibody, clone UMAB58	UM800009
CD21	Rabbit Polyclonal Anti-CR2 (CD21) Antibody	TA350811
CD22	CD22 mouse monoclonal antibody, clone OTI4C3	TA506412
CD22	CD22 mouse monoclonal antibody, clone OTI4C3	TA506412
CD24	Mouse Anti-Human CD24 Purified, Clone eBioSN3 (SN3 A5-2H10)	TA320249
CD25	Anti-IL2RA (CD25) Rabbit Polyclonal Antibody	TA323669
CD27	Mouse Anti-Human CD27 Purified, Clone O323	TA320253
CD38	CD38 mouse monoclonal antibody, clone OTI1C9	TA804538
CD3E	CD3E mouse monoclonal antibody, clone UMAB54	UM500048
CD45R/B220	PTPRC (CD45R) mouse monoclonal antibody, clone OTI1B7	TA506054
CD69	Anti-CD69 Rabbit Polyclonal Antibody	TA321397
CD81	Rabbit Polyclonal CD81 Antibody	TA306789
CD81	Rabbit Polyclonal CD81 Antibody	TA306789
CD82	Rabbit Polyclonal KAI1 (CD82) Antibody	TA306407
CR2	Rabbit Polyclonal Anti-CR2 Antibody	TA350811
IFN-r	Rabbit polyclonal anti-IFN alpha 2b (IFN-R) antibody	TA319105
IL-10	ELISA and Luminex validated biotinylated IL-10 Rat monoclonal antibody, clone OTI12G8	TA700017
IL-2	Rabbit polyclonal IL-2 antibody Peroxidase Conjugated	TA319284
IL-6	IL6 mouse monoclonal antibody, clone OTI3G9	TA500067
Lyn	Rabbit Polyclonal Anti-LYN Antibody	TA350146
SHP-1	Rabbit polyclonal SHP-1 (Ab-564) antibody	TA312507
TNF-a	TNF mouse monoclonal antibody, clone OTI1C1	TA506513
VAV2	Rabbit Polyclonal Anti-VAV2 Antibody	TA351911

For more antibodies, please visit
www.origene.com/products/antibodies