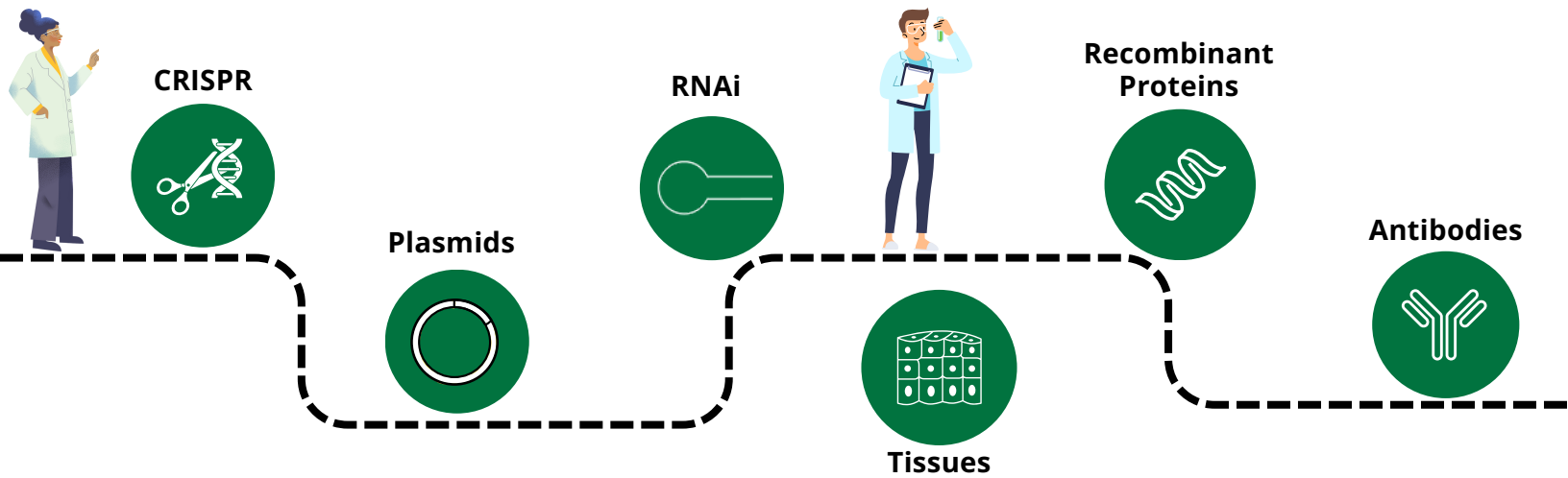


# Breast Cancer Research Catalog

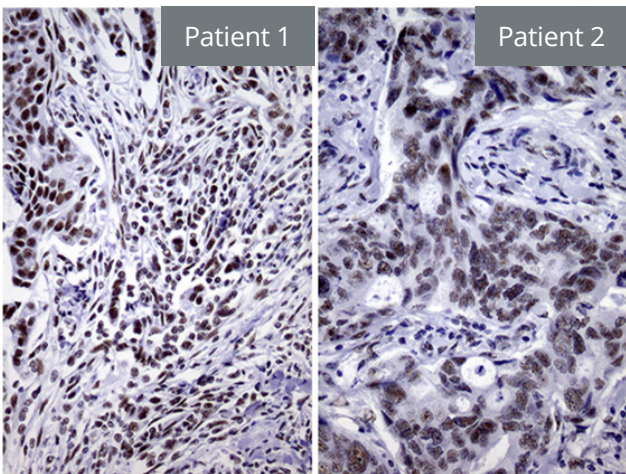
## Your One Stop Shop: From Genomics to Proteomics



## Breast Cancer Research Products from OriGene

Breast cancer is one of the most commonly diagnosed cancers worldwide. With breast cancer posing a significant challenge to the medical community, OriGene recognizes the urgency of advancing research for better insights and solutions. From meticulously designed plasmids and antibodies to recombinant proteins and CRISPR knockout kits, OriGene equips researchers to unravel the genetic and molecular complexities of breast cancer.

## Product Highlight: BRCA1 Mouse Monoclonal Antibody



**Catalog #:** TA802618

**Gene Target:** BRCA1

**Host:** Mouse

**Reactivity:** Human

**Isotype:** IgG1

**Tested Application(s):** IHC, WB

**Available Volumes:** 30ul, 100ul, Custom

**Figure 1.** Immunohistochemical staining of paraffin-embedded Adenocarcinoma of Human breast tissue using anti-BRCA1 mouse monoclonal antibody.



Interested in  
Tissues for  
Breast Cancer Research?

SCAN ME

# Breast Cancer Gene Targets

Below is a table summarizing our product offering for popular breast cancer gene targets. For custom projects, reach out to us at [techsupport@origene.com](mailto:techsupport@origene.com) to collaborate on your research needs.

Gene Name	Plasmids	Recombinant Proteins	Antibodies	siRNA	qPCR Primer Pairs	CRISPR Knockout Kits
<u>ALDH1</u>	✓	✓	✓	✓	✓	✓
<u>AR</u>	✓	✓	✓	✓	✓	✓
<u>ATM</u>	✓	Custom	✓	✓	✓	✓
<u>BARD1</u>	✓	Custom	✓	✓	✓	✓
<u>BRCA1</u>	✓	Custom	✓	✓	✓	✓
<u>BRCA2</u>	✓	Custom	✓	✓	✓	✓
<u>BRIP1</u>	✓	Custom	✓	✓	✓	✓
<u>Cadherin</u>	✓	✓	✓	✓	✓	✓
<u>CASP8</u>	✓	✓	✓	✓	✓	✓
<u>Caveolin</u>	✓	✓	✓	✓	✓	✓
<u>CD44</u>	✓	✓	✓	✓	✓	✓
<u>CDH1</u>	✓	✓	✓	✓	✓	✓
<u>CHEK2</u>	✓	✓	✓	✓	✓	✓
<u>Claudin</u>	✓	✓	✓	✓	✓	✓
<u>CTLA4</u>	✓	✓	✓	✓	✓	✓
<u>CYP19A1</u>	✓	✓	✓	✓	✓	✓
<u>Cytokeratin</u>	✓	✓	✓	✓	✓	✓
<u>EGFR</u>	✓	✓	✓	✓	✓	✓
<u>ESR1</u>	✓	✓	✓	✓	✓	✓
<u>FGFR2</u>	✓	✓	✓	✓	✓	✓
<u>GRB7</u>	✓	✓	✓	✓	✓	✓
<u>H19</u>	✓	Custom	Custom	✓	✓	Custom
<u>HER2</u>	✓	✓	✓	✓	✓	✓
<u>LSP1</u>	✓	✓	✓	✓	✓	✓
<u>MAP3K1</u>	✓	✓	✓	✓	✓	✓
<u>MRE11A</u>	✓	✓	✓	✓	✓	✓
<u>MUC1</u>	✓	✓	✓	✓	✓	✓
<u>NBN</u>	✓	✓	✓	✓	✓	✓
<u>P53</u>	✓	✓	✓	✓	✓	✓
<u>PALB2</u>	✓	✓	✓	✓	✓	✓
<u>PGR</u>	✓	✓	✓	✓	✓	✓
<u>PTEN</u>	✓	✓	✓	✓	✓	✓
<u>RAD51</u>	✓	✓	✓	✓	✓	✓
<u>RAD51C</u>	✓	✓	✓	✓	✓	✓
<u>RAD51D</u>	✓	✓	✓	✓	✓	✓

©OriGene Technologies, Inc. All rights reserved

Contact Us:

P 301.340.3188

F 301.340.9254

E [sales@origene.com](mailto:sales@origene.com)

