

# Multiple-Choice™ First Strand cDNA

## OVERVIEW

Amplification and cloning of cDNA by PCR is an essential tool for today's molecular biologist. This technique can be used to clone members of a multi-gene family, either homologues across species or previously identified. PCR amplification of cDNA and its subsequent subcloning can often save time and reduce costs by eliminating the need for the construction and screening of a cDNA library.

## PRODUCT FORMAT AND QUALITY CONTROL

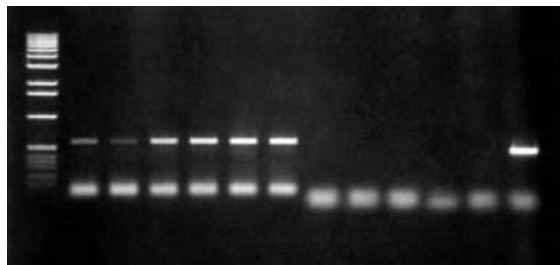
Multiple-Choice™ First-Strand cDNA Kits are formatted for the rapid and efficient screening of a panel of tissues for gene expression. The cDNA panels provided in these kits are also ideal for the characterization of alternatively spliced mRNA either within a single tissue or across multiple organism tissues.

Each step in the production of Multiple-Choice First Strand cDNA is carefully monitored to ensure product quality. First strand cDNA is synthesized from poly A+ RNA using an oligo(dT) primer and a reverse transcriptase that favors the production of long product. Each panel of cDNAs is examined by PCR using standard conditions for the detection of "house-keeping" cDNAs, such as b-actin and cyclophilin. Small aliquots of these primers are included as controls in each kit.

## PRODUCT APPLICATION

Multiple-Choice First Strand cDNA is PCR\* ready and available as individual cDNA (30 reactions) or in sets of six cDNAs (10 reaction each).

When Multiple-Choice cDNA is used as a template for PCR, it results in specific amplification of the desired sequence. As shown the figure below, an actin signal is detectable in each cDNA sample of the rat Multiple-Choice cDNA Set 1, whereas the liver-specific cytochrome P450 can only be amplified from the liver cDNA sample.



## KIT COMPONENTS

- First strand cDNAs derived from either human, rat or mouse tissues (2-10ng/ul)
- Control primers for  $\beta$ -Actin
- Control primers for Cyclophilin (Multiple Choice™ cDNA Set only)

# Multiple-Choice™ First Strand cDNA

## ORDERING INFORMATION & PRICING

MULTIPLE-CHOICE FIRST STANDARD cDNA	TISSUES AVAILABLE	CATALOG NUMBER
Human cDNA from individual tissues (30 reactions)	Brain, Heart, Kidney, Liver, Placenta, PBL, Lung, Muscle, Ovary, Prostate, Small Intestine, Spleen, Stomach, Testis, Fetal Brain, Fetal Kidney, Fetal Liver, Fetal Muscle, Fetal Spleen, Fetal Testis	CH-10XX
Mouse cDNA from individual tissues (30 reactions)	Brain, Heart, Kidney, Liver, Lung, Muscle, Skin, Small Intestine, Spleen, Stomach, Testis, Thymus	CM-10XX
Rat cDNA from individual tissues (30 reactions)	Brain, Heart, Kidney, Liver, Lung, Muscle, Skin, Small Intestine, Spleen, Stomach, Testis, Thymus	CR-10XX
Human cDNA Set 1	Brain, Heart, Kidney, Spleen, Liver, PBL	CH-1101
Human cDNA Set 2	Lung, Muscle, Ovary, Prostate, Small Intestine, Testis	CH-1102
Human cDNA Set 3	Fetal Brain, Fetal Kidney, Fetal Liver, Fetal Muscle, Fetal Spleen, Fetal Testis	CH-1103
Mouse cDNA Set 1	Brain, Heart, Kidney, Liver, Spleen, Thymus	CM-1101
Mouse cDNA Set 2	Lung, Muscle, Skin, Small Intestine, Stomach, Testis	CM-1002
Rat cDNA Set 1	Brain, Heart, Kidney, Liver, Spleen, Thymus	CR-1001
Rat cDNA Set 2	Lung, Muscle, Skin, Small Intestine, Stomach, Testis	CR-1002

**For pricing information call Customer Service at 1-888-267-4436 ext. 1.**

**To Order call 888-267-4436 (M-F, 9AM-5PM EST) or fax your order to 1-301-340-9254 (24 hours)**

**For Technical Support call 301-340-3188 ext. 2 or visit the OriGene website at [www.origene.com](http://www.origene.com)**

## PRODUCT DELIVERY AND STORAGE

Multiple-Choice First Stand cDNA is shipped on dry ice. Product storage at -20°C is recommended.



**TrueClone™ Collection Blue-Ribbon™ Reagents Rapid-Screen™ Tools**

6 Taft Court, Suite 300 Rockville, MD 20850 • Phone: 888-267-4436 Fax: 301-340-9254

[www.origene.com](http://www.origene.com)