

Product Overview

The Evolving Product Lines

cDNA Clones
Lenti Vectors and Particles
Proteins
Antibodies
CRISPR/Cas9/sgRNAs
RNAi

 **ORIGENE**
www.origene.com

Comprehensive Collection of cDNA Clones

Choose from 100,000 ready-to-ship cDNA for a quick and cost-saving solution

- Broad coverage: human, mouse, rat and virus
- Expression clones driven by CMV promoter
- 10 µg transfection-ready plasmids
- Lenti vector/particles available

Start here with other vendors or...



Other Providers:
Clones arrive as
bacterial stock

Start here with OriGene



OriGene:
Clones arrive as
purified plasmid DNA

OriGene cDNA clone offerings

TrueClone



- Native protein expressed; No tags
- Cost-effective and time-saving
- Pathway-specific clone sets available

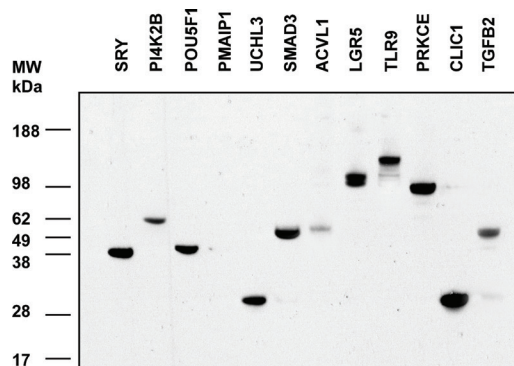
TrueORF



- Two tags readily available: Myc-DDK or GFP
- 20,000 TrueORF Gold: expression validated by WB
- Flexibility: easily shuttled to 80 destination vectors



- TrueORF clones with Myc-DDK tag
- Cited in > 1,000 publications



Myc-DDK tagged ORF clones were transfected into HEK293 cells; WB was performed with anti-DDK Ab

TrueORF^{Gold}

- ✓ Expression Validated
- ✓ Sequence Verified
- ✓ Next-Day Shipment

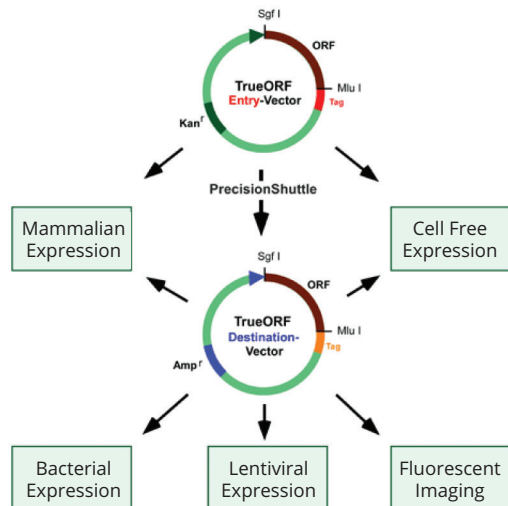


Scan to watch our
video on cDNA clones

Convenient Choices of TrueORF Vectors

Easy Shuttling: The ORF insert can be shuttled to > 80 destination vectors

Vector	Vector SKU	Vector Map	Fusion Tag	Ideal Application	ORF Clone SKUs	Examples
pCMV6-Entry	PS100001		C-terminal Myc-DDK	Detection and purification of over-expressed protein	RC2XXXXX	
pCMV6-AC-GFP	PS100010		C-terminal tGFP	Tracking the over-expressed protein in transfected cells	RG2XXXXX	



Epitope tagging	FP tagging	Selection markers	Lentiviral	Bacterial expression
Myc-DDK	GFP	Puromycin	Myc-DDK	His
HA	RFP	Neomycin	GFP	GST
His	YFP	Blasticidin	RFP	
3xDDK	CFP	Hygromycin	YFP	
FC	mBFP			
	mKate			

All TrueORF inserts housed in a pCMV6-Entry vector can be easily shuttled via PrecisionShuttle, a simple 'cut-and-paste' procedure, into any of the destination vectors (via two rare-cutting restriction endonucleases, Sgf I and Mlu I).



Lentiviral System for Effective DNA Delivery

Vector Name	pLenti-C-Myc-DDK	pLenti-C-mGFP
Vector SKU	PS100064	PS100071
Fusion Tag	C-terminal Myc-DDK	C-terminal mGFP
Ideal For	In hard-to-transfect cells: Detection and purification of expressed protein	Tracking the over-expressed protein in transfected cells

- 3rd Generation Lentiviral System
- Ideal for delivering DNA into hard-to-transfect cells and animal models
- Genome-wide coverage of human/mouse/rat ORF clones
- C-terminal Myc-DDK or mGFP tag

Lenti Packaging Kit

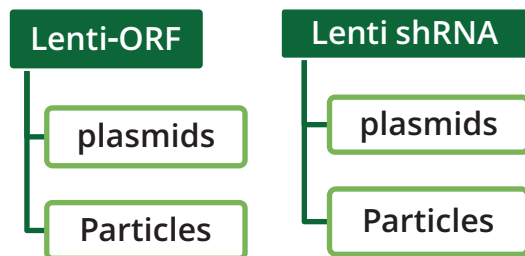
Lenti-vPAK (Cat# TR30037)

for generating lentivirus

Transfection reagent included!



Lentiviral System: Lenti-ORF & Lenti-shRNA

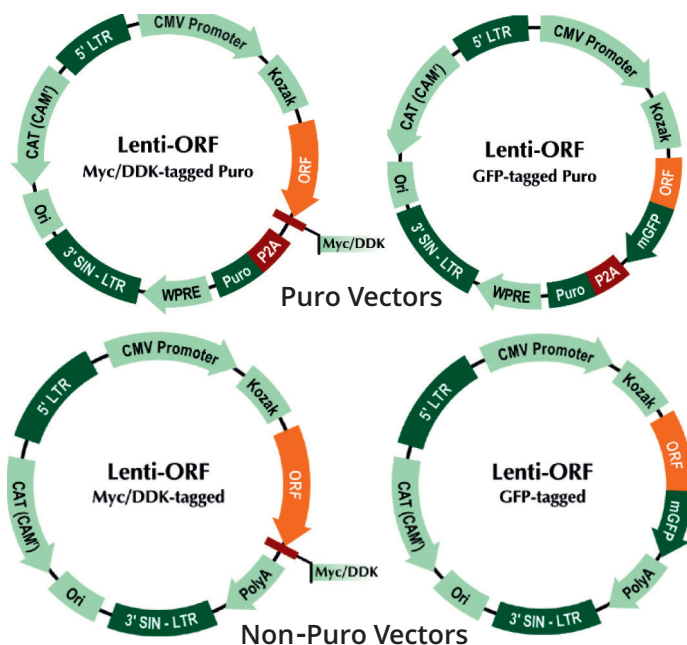


- **High efficiency:** Up to 100% transduction
- **Broad spectrum:** Dividing & non-dividing
- **Biosafety:** 3rd generation, safest
- **Coverage:** Genome wide offering



Accessories: **Packaging kit** **Control particles** **LentiTiter Kit**

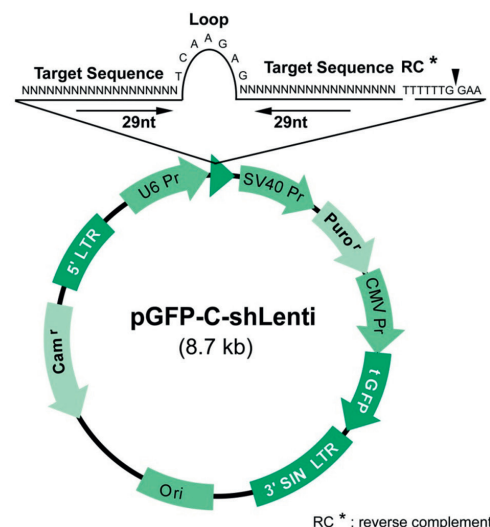
Lenti-ORF clones, 4 vector options



More lentiviral destination vectors:

<https://www.origene.com/products/vectors/orf-cloning-vectors>

Lenti shRNAs

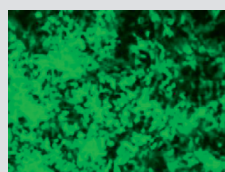


Three major functional elements

- shRNA under U6 promoter
- Puro selection marker
- GFP as a reporter

Highly effective Lenti-packaging kit
Cat# TR30037

- Optimized for high efficiency
- Package 3rd generation vectors
- Transfection reagent included



HEK293 cells transduced
with lenti GFP virus

One-Wash™ Lenti Titer kit
Cat# TR30038

- Simplified workflow, 1 wash instead of 4
- One temperature incubation, no 37°C
- Shortened sample binding time, 2 hr vs O/N

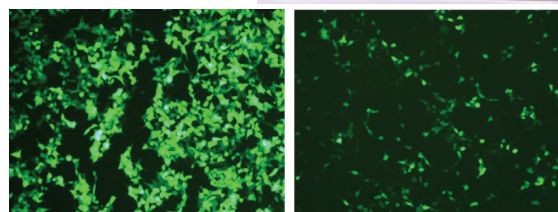
RNA Interference with Guaranteed Knockdown

HuSH-29 shRNA

Comprehensive coverage of human, mouse & rat genes

- 29mer shRNA: higher potency, minimal interferon response
- Multiple vector selection: lentiviral or retroviral
- Guaranteed knockdown ($\geq 70\%$)
- Lenti particles available
- Each kit contains 4 shRNAs + 1 scrambled control

We recommend the highly effective Lenti-vPAK (Cat# TR30037) for Lenti-shRNA packaging.



tGFP Knockdown using Lenti-shRNA

Trilencer-27 siRNA

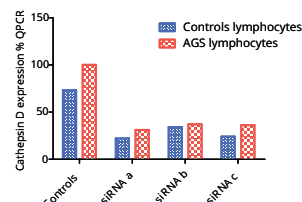
For human, mouse and rat

- 27mer Dicer-substrate duplex–higher potency & minimal interferon response
- Guaranteed gene knockdown ($\geq 70\%$)
- Cost effective
- Each kit contains 3 gene-specific siRNAs + 1 negative control



siRNA Transfection Reagent: siTRAN 1.0

- Dual purpose reagent – transfect both siRNA duplex and cDNA
- High transfection efficiency and low cytotoxicity
- Proven effective in multiple cell lines and primary cells



OriGene siRNAs achieved more than 70% knockdown of the expression of cathepsin D in AGS lymphocytes. Data retrieved from Pulliero et al., 2013.

microRNA Tools

From miRNA detection, quantification to target identification

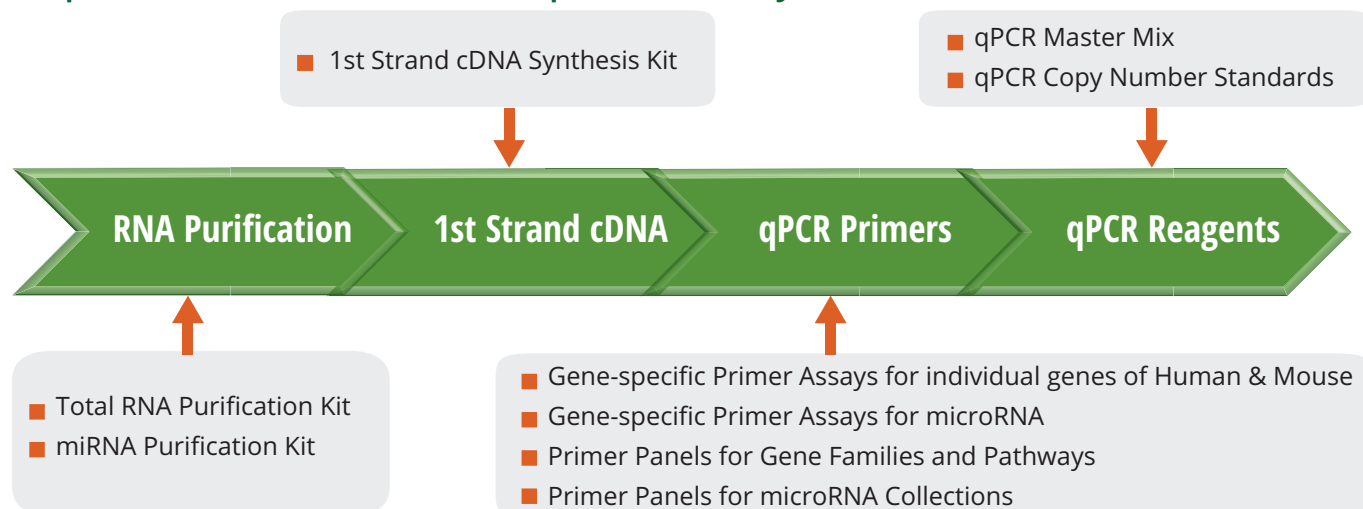
Global miRNA profiling	qPCR Master Mix	miRNA expression perturbation	miRNA expression plasmids
	qPCR Primer Panels		Transfection reagents
miRNA detection & quantification	miRNA primer pairs	miRNA target identification	3' UTR reporter clones
	miRNA copy number standards		Expression cDNA clones

Scan to watch our video on shRNA



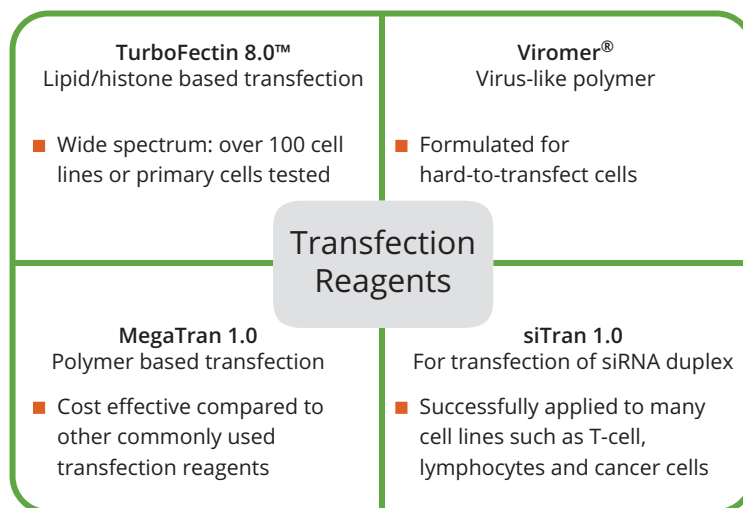
Real-time PCR & Lab Essentials

Comprehensive Tools for Gene Expression Analysis



Molecular Tools for Your Day-to-Day Needs

Transfection Reagents, Tailored for Your Unique Needs



PowerPrep® Plasmid Purification Kits

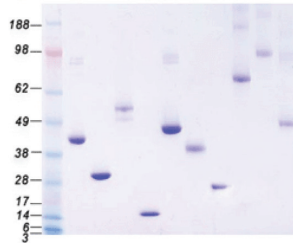
- High Yield... Low Endotoxins... No Syringes...
- New!** Low cost shipping option, cheaper and solution-free!



Recombinant Human Proteins

Better Proteins, Better Assays

Powered by our extensive collection of TrueORF human cDNA clones, OriGene offers full-length purified human proteins expressed in human cells. C-terminal Myc-DDK tagged human ORF clones are transfected into HEK293T cells. The total crude cell lysates are over-expression lysates with the specific gene over-expressed. Recombinant human proteins are obtained with anti-DDK antibody by affinity purification under native conditions.



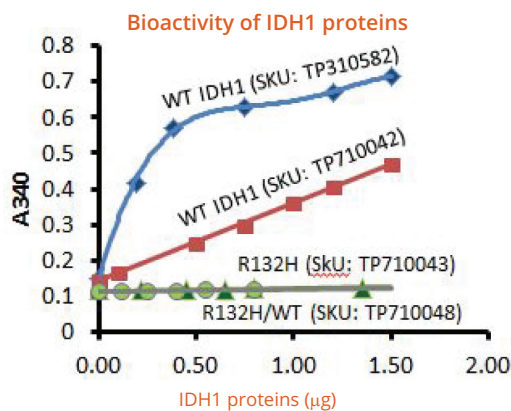
Features

- Expressed in HEK293 cells
- Myc-DDK (FLAG®) tagged
- Optimal preservation of protein structure and post-translational modification

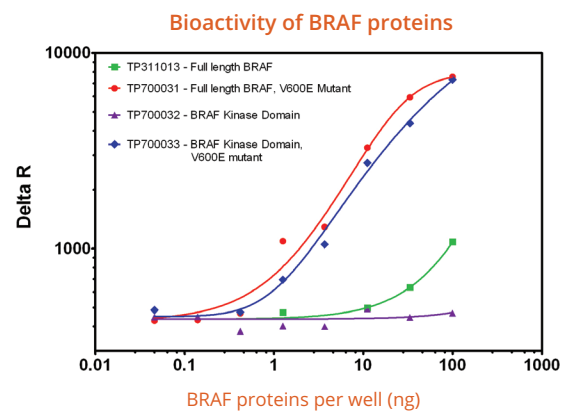
Benefits of Mammalian Expressed Proteins

	Mammalian	Yeast	Insect Cells	E. coli
Protein folding and purification	Optimal	Poor	Low	Poor
Post-translational processing	Yes	Low	Low	No
Authenticity & Bioactivity	Native & Active	Poor	Poor	Very Poor
Time & Efforts required	Time-consuming & Expensive	Low cost	High yield	Low cost & High yield

Bioactivity of Purified Proteins in Functional Assays



Enzymatic activities of wild-type or mutant IDH1 proteins were determined by monitoring NADPH formation based on the absorbance at 345nm.



BRAF kinase activity was measured in an HTRF® assay.

Scan for a video on
Expression Hosts for Recombinant Proteins



Primary Antibodies

Better Antigens, Better Antibodies, Better Assays

Primary Antibodies

- Monoclonal and polyclonal antibodies against targets of various pathways
- Money back guarantee for validated applications

Feature Product

TrueMAB™ Mouse Monoclonal Antibody



- Generated against full-length human proteins produced in human cells
- Recognizes native epitopes
- Extensively validated for WB, IHC, IF/ICC, IP, Flow cytometry, ELISA and Luminex
- Available in bulk, carrier-free (BSA/glycerol-free) formulation and conjugates

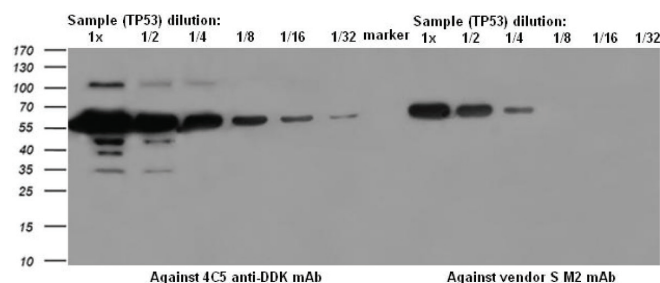


A positive control for WB is available at nominal cost!

While overexpression lysate is available

Antibodies against Epitope Tags and Fluorescent Proteins

- Epitope tags:
DDK (FLAG® tag), Myc, HA, His, GST, V5



Origene's DDK (FLAG® tag) antibody (Cat# TA50011) is shown to be more sensitive than anti-FLAG M2 from vendor S.

- A broad selection of antibodies against fluorescent proteins

Cyan	Green	Yellow	Orange	Red		Far Red	Photo-switchable
AmCyan1 eCFP mBFP mCFP	AcGFP1 eGFP mGFP tGFP ZsGreen1	mBanana mYFP tYFP ZsYellow1	mOrange mOrange2	AsRed2 DsRed-Express2 DsRed-Monomer DsRed2 KillerRed	mCherry mRFP mStrawberry tdTomato tRFP	E2-Crimson mKate mPlum mRaspberry	Dendra2 PS-CFP2

Other Antibody Products

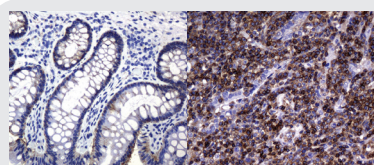
- Secondary antibodies
- Loading control antibodies: GAPDH, Actin, Tubulin, Hsp90
- Western blot reagents



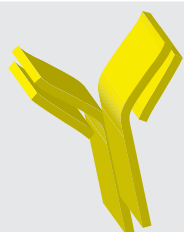
Scan to watch our video on TrueMAB

Whole Product Solution for Anatomic Pathology

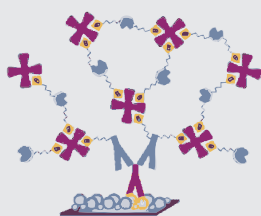
Linking Genes and Proteins to Cancer Biology



Cancer Tissues



IHC Antibodies



Detection Systems

TissueFocus™ Products

Over 140,000 human normal and cancer tissue samples

- FFPE & frozen tissue sections
- Online search available



UltraMAB™ The only antibody tested for specificity

Non-specific antibodies would generate incorrect and false-positive diagnosis. OriGene developed a novel technology – the High-density Protein Microarray – to validate antibody specificity, and to ensure every UltraMAB monoclonal antibody is mono-specific to its target. More than 17,000 human proteins are included in the microarray, covering more than 80% of the human genome. UltraMAB is also validated extensively for its performance under clinical conditions.

Antibody specificity tested by
High-Density Protein Microarray

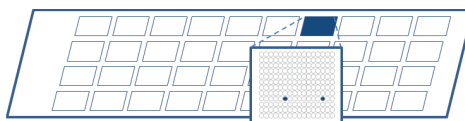
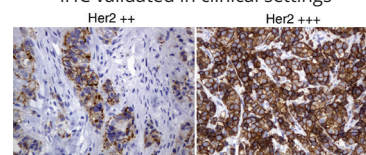


Diagram of antibody specificity test with High-density Protein Microarray (results in duplicate)

IHC validated in clinical settings



IHC analysis of human breast carcinoma using HER2 antibody (Cat# UM500036)

Selected UltraMAB Targets

ALK, Beta-Catenin, BMP4, CD2, CD4, CD5, CD20, EGFR, EPCAM, ERCC1, ERG, FOXP1, GFAP, HE4, HER2, Ki67, KRT8, p53, PD1, PDL1, PECAM1, S100P, SERPINB4, SOX5, XPF, XRCC1

Polymer HRP and AP Detection Kits

- For human, mouse, rat and other tissues
- Multiple staining for human and other animal tissues

IHC Accessory Products

- Chromogen kits
- Antigen retrieval buffers
- IHC reagents and more

Featured Product

- **Klear™ Human-on-Human Kit:** detect human primary antibody on human/primate tissue Cat# GB200002
- **Klear™ Mouse-on-Mouse Kit:** detect mouse primary antibody on mouse/rat tissue Cat# GB200006

Video on UltraMAB &
Ab Specificity test



Human Tissue Bank

Arrays, Sections, DNA, RNA & Proteins from Normal and Cancer Tissues

OriGene has developed comprehensive human cancer and normal tissue products from its biorepository of over 140,000 high quality human tissues.

Tissues collected from U.S. medical centers under strict ethical requirements and IRB protocols

TissueFocus™ Individual Products

- **Tissue total RNA and genomic DNA:** Samples were derived from our high quality frozen tissues after rigorous QC testing. Agilent Bioanalyzer 28S/18S ratio, Electropherogram, A260/A280 ratio and PCR images available upon request.
- **Tissue Protein Lysate:** Protein lysates were generated using a Modified RIPA buffer (no SDS) in the presence of protease and phosphatase inhibitors. Protein quantification is performed using the BCA Protein Assay.
- **Tissue Sections:** Frozen and FFPE tissue sections can be used for applications such as IHC, ISH, LCM and RNA/DNA/Protein extractions. Each section is freshly cut onto a SuperFrost positively charged glass slide, and offered as a set of 5 slides (each 5 micron thickness).

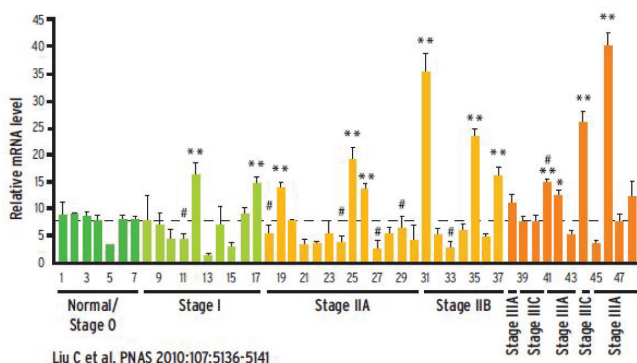
Tips! How to search for a specific tissue sample?

- Use **TissueFocus™ Search Tool** on <https://www.origene.com/products/tissues> to get details including diagnosis, disease stage, race, gender, age, etc.
- Or, let our expert clinical data managers help you: tissue@origene.com



TissueScan™ cDNA Array

qPCR gene expression results of hundreds of tissues in 2 hours



Researchers at Washington University School of Medicine discovered a new cancer biomarker LRP6 that could define a new subtype of breast cancer by using OriGene's TissueScan™ cDNA arrays.

TissueScan™ arrays have been cited in hundreds of publications



New to TissueScan™ ?
Scan to watch a video protocol!

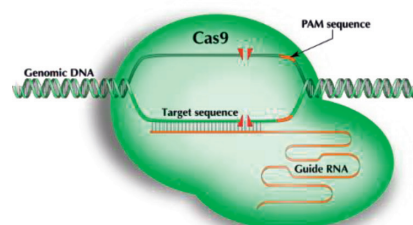


TissueScan Offerings

Cancer Survey Array	96 samples / 8 cancer types	
	384 samples / 22 cancer types	
Cancer Specific Array	Brain	Melanoma
	Breast	Ovary
	Colon	Pancreas
	Head & Neck	Prostate
	Kidney	Sarcoma
	Lymphoma	Thyroid

Genome Editing with CRISPR/Cas9

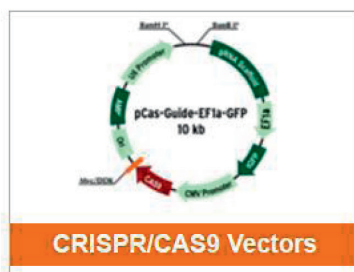
CRISPR/Cas9 is the cutting-edge RNA-guided genome editing tool, which is versatile, simple and affordable. Cas9 in complex with the guide RNA will lead to double-stranded break in a sequence specific manner. Genome editing can be achieved via repair mechanisms.



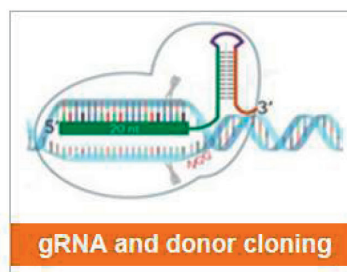
CRISPR Products



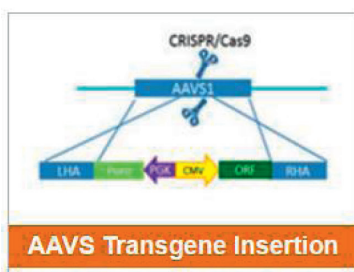
Gene Knockout Kits



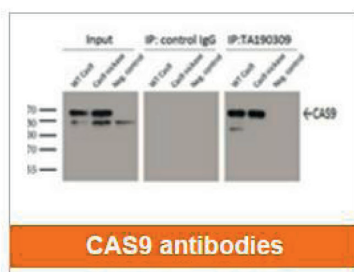
CRISPR/CAS9 Vectors



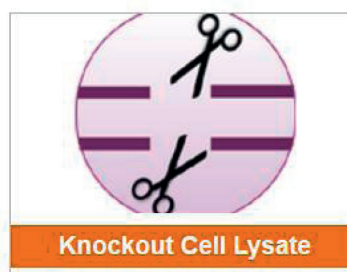
gRNA and donor cloning



AAVS Transgene Insertion

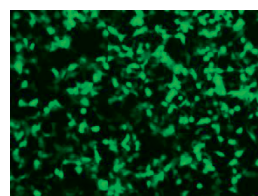
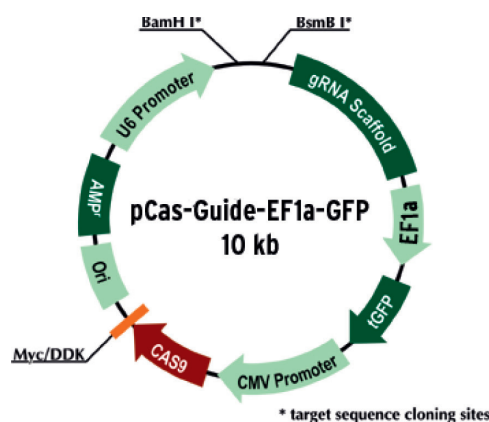


CAS9 antibodies



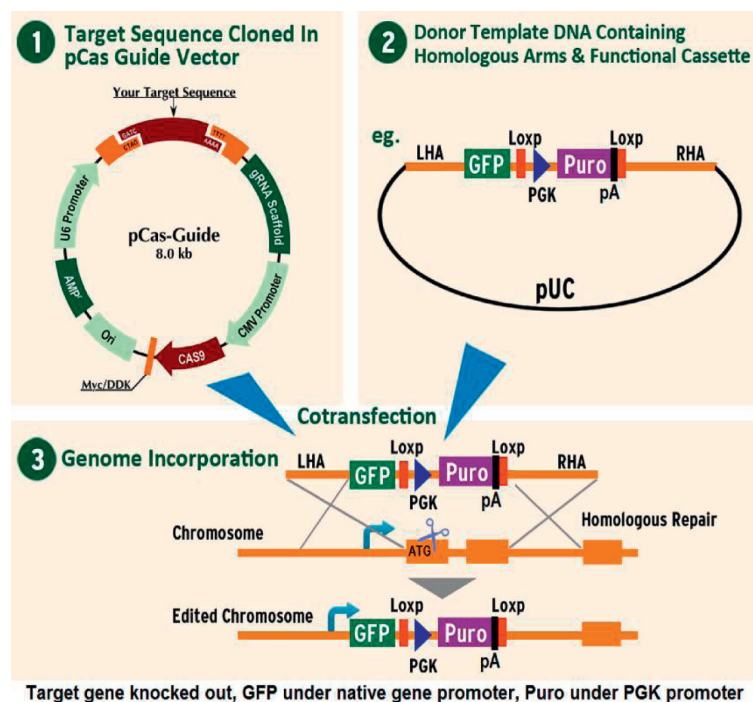
Knockout Cell Lysate

All-In-One-Vector



pCas-Guide-EF1a-GFP was transfected into HEK293 cells. The fluorescence is GFP expression.

Scheme of knockout / knockin kit



Scan to learn more about
CRISPR/Cas9



OriGene, Your Partner in Research, Diagnostics and Beyond

- cDNA Clones/Lenti Particles
- CRISPR/Cas9/sgRNA
- Recombinant Proteins
- Antibodies
- RNAi
- Normal & Cancer Tissues



US Headquarter

9620 Medical Center Drive, Suite 200,
Rockville, MD, USA 20850
+1.301.340.3188
www.origene.com

OriGene EU

Acris Antibodies GmbH
Schillerstraße 5
32052 Herford
Germany
+49.5221.346060
www.acris-antibodies.com

OriGene China

HuiLongSen International Science
& Technology Industry Park,
Build 11, No.99 Kechuang 14th Street
Beijing, China 101111
+86.10.59755312
www.origene.com.cn