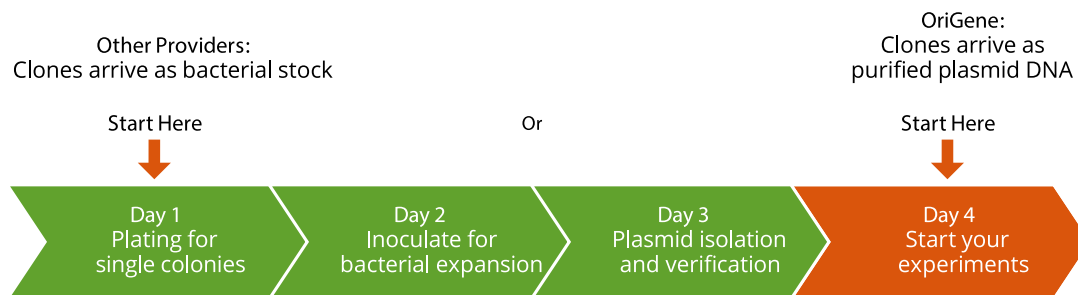


Expression-ready cDNA clones

When you need a cDNA clone, OriGene is your best choice. Our 500,000 ready-to-ship cDNA clones offer a quick and cost-saving solution.

- Comprehensive: Genome-wide coverage for human, mouse, rat, and virus
- Versatile: untagged or tagged clones (>100 vector options)
- Expression validation
- Transfection-ready DNA: Plasmids are purified with ion-exchange columns
- Pathway focused cDNA clone sets available



Two major types of cDNA clones offered

TrueClone (non-tagged clones)

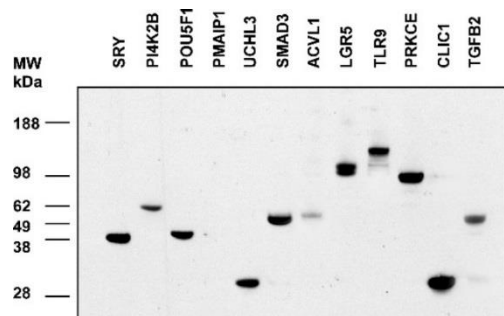
- **Native protein** expressed, no tags
- **Cost effective and time saving**
- Pathway-specific **clone sets**

True ORF (tagged ORF clones)

- **Two tags:** Myc-DDK or GFP for detection or purification
- 20,000 TrueORF Gold: **Expressio validated**
- **Flexibility:** easy shuttling into >100 destination vectors (other tags etc)

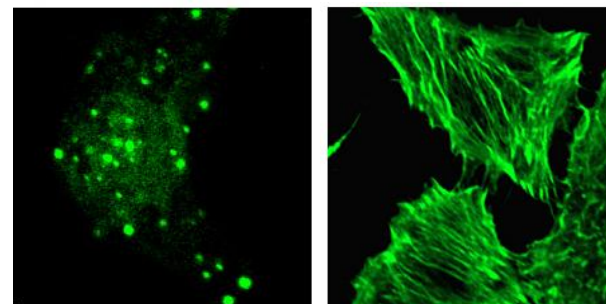
Validation Data

GFP-tagged ORF clones



Myc-DDK tagged ORF clone were transfected into HEK293 cells. WB was performed with an anti-DDK antibody

GFP-tagged ORF clones

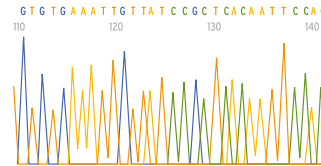
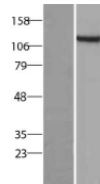


GFP tagged ORF clone was transfected into HEK293 cells. GFP tagged ORF clone can be used to track fusion protein cellular localization.

Featured cDNA clones

TrueORF Gold Expression-validated cDNA Clones

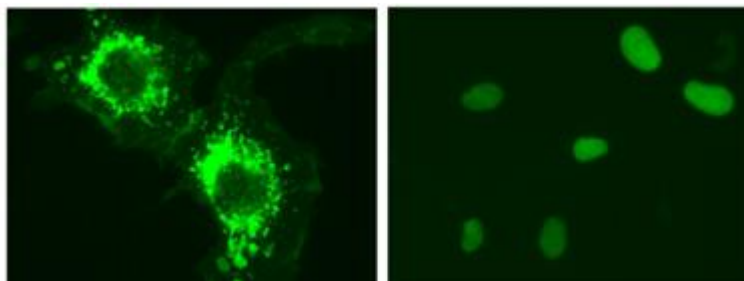
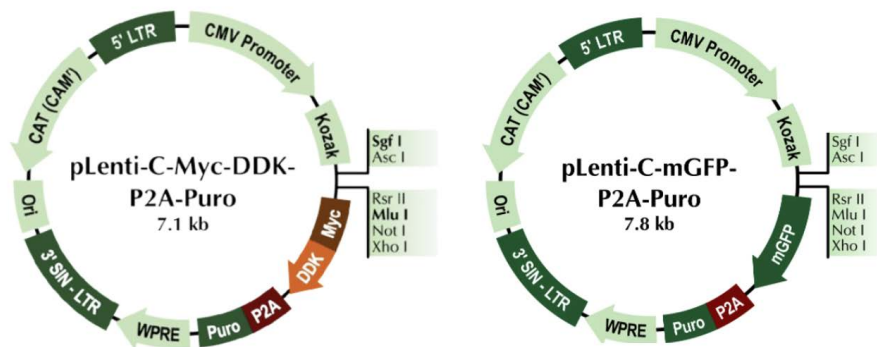
- ✓ Gene expression verified on WB
- ✓ Fully sequenced
- ✓ Ship next day



Lenti-ORF Clones

The Lentiviral system is a very powerful gene delivery tool.

- **Broad Spectrum:** Deliver genes to almost all cells, including non-dividing cells
- **High transduction efficiency:** Easily reaches 100%



RC221478L2V
Human F11R

RC229235L2V
Human KLF4