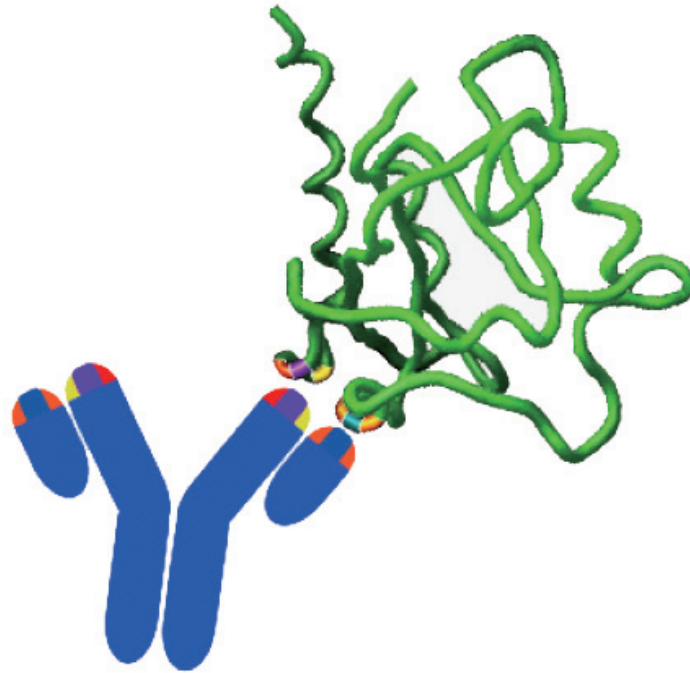


Better Antigens Better Antibodies Better Assays



Featured antibodies made with native antigens



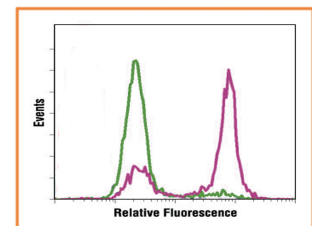
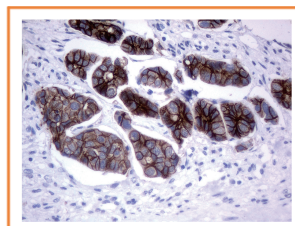
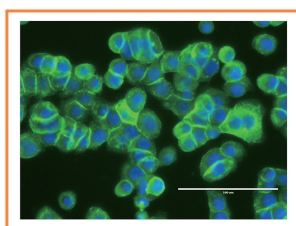
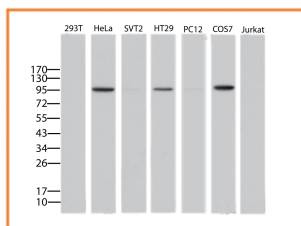
Over 30,000 primary antibodies to choose from



Positive control for WB included for free!



Money back guarantee*



* Money back guarantee applied to OriGene validated applications

www.origene.com/antibody

The only antibody tested for specificity

Mono-specific tested by High-density Protein Microarray

Validated for anatomic pathology
IHC, Flow in clinical settings Also validated for WB, IF/ICC and IP

Selected UltraMAB Targets

Beta-Catenin, BMP4, CD2, EGFR, ERCC1, ERG, FDX1, HER2, Ki67, p53, p63, PECAM1, SOX5

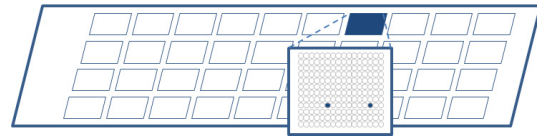
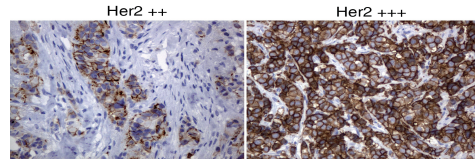


Diagram of antibody specificity test with High-density Protein Microarray (results in duplicate)



IHC analysis of human breast carcinoma using HER2 antibody (Cat# UM500036)

Origene.com/UltraMAB/

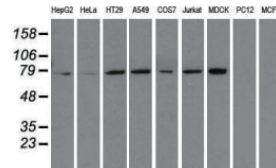


Antibodies raised against full-length human proteins

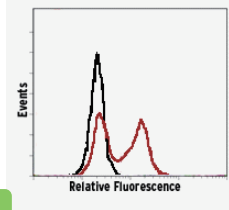
Better Antigens Full-length proteins produced in human cells

Extensive Validation WB, IHC, IF/ICC, IP, ELISA, Flow Cytometry and Luminex

Better Assays Carrier-free and conjugated TrueMAB™ available for assay development



WB analysis of 9 cell lines using HSP70 antibody (Cat# TA500771)



Flow analysis of live HT29 cells using LGR5 antibody (Cat# TA503316)

Origene.com/Antibody/



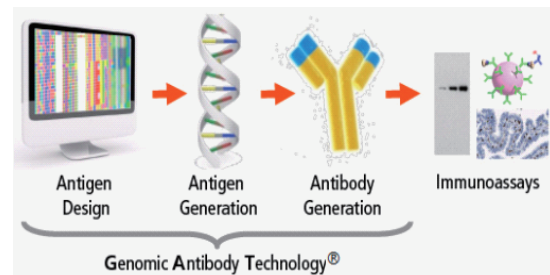
Antibodies against native protein antigen with DNA immunization

Native antigen protein antigen produced in vivo through DNA immunization

Epitope-sensitive applications such as ChIP, IP & IHC

Outperforms peptide-derived antibodies in WB, IF/ICC & ELISA

Better antibodies against GPCRs and other membrane proteins



Custom antibody development available. Please inquire: antibody@origene.com

Origene.com/Antibody/Genomic-Antibody-Technology.aspx

