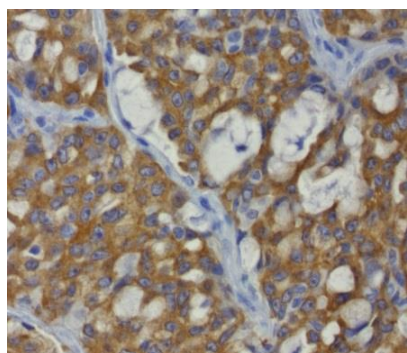


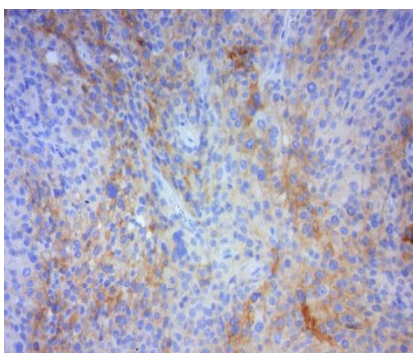
# Tissue Focus Control Slides for IHC

## ALK, PD-L1 & PD1 Control Slides

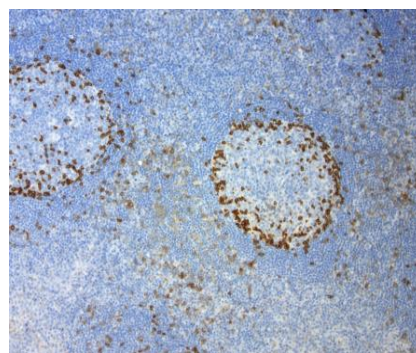
OriGene now offers positive and negative control slides for ALK, PD1 and PDL1 developed specifically for immunohistochemistry are guaranteed to detect the protein target as listed. Control slides are prepared using human tissue that has been collected from major US institutions under strict IRB and ethical consenting practices tracked, maintained and processed with the highest standards.



ALK Control Slide - Lung Cancer



PD-L1 Control Slide - Melanoma



PD1 Control Slide - Tonsil

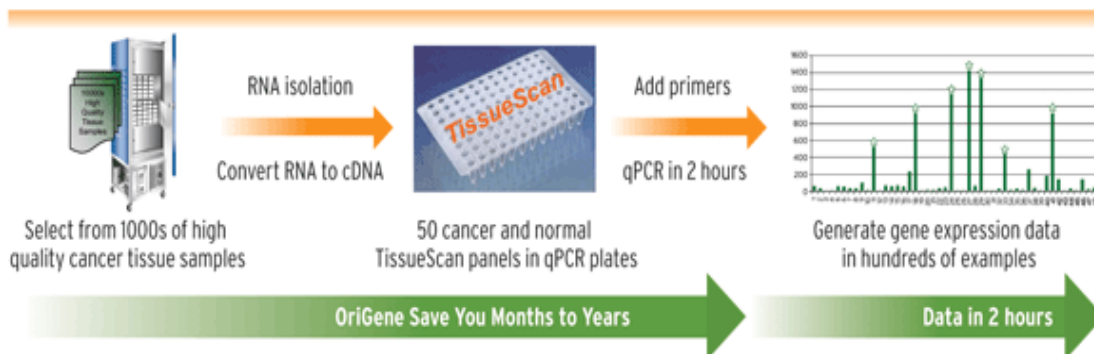
### Features

- Both positive and negative tissue 4um section mounted on unstained slide.
- Available in sets of 2 or 5 slides.
- Tissues are placed on SuperFrost® Plus Slides.
- We provide the slides unbaked. We recommend that you bake the control slides(s) according to your standard laboratory operating protocol.
- Final decision on antibody screen or stain should be based on the antibody manufacturer data sheets and input from a pathologist.

For more information, please visit  
[www.origene.com/tissues](http://www.origene.com/tissues)  
or contact [tissue@origene.com](mailto:tissue@origene.com)

# OriGene Tissue Products

## TissueScan™ Cancer and Normal Tissue cDNA Arrays



Bladder Cancer cDNA Array I	Brain Cancer cDNA Array I	Breast Cancer cDNA Array I	Colon Cancer cDNA Array I	Crohn's/Colitis cDNA Array I & II	Endometrial Cancer cDNA Array I & II
Gastro-esophageal Cancer cDNA Array	Head and Neck Cancer cDNA Array I	Human Brain cDNA Array	Human Normal cDNA Array	Human Cancer cDNA Array Multiple Types of Cancers	Kidney Cancer cDNA Array I
Liver Cancer cDNA Array I	Lung Cancer cDNA Array I	Lymphoma cDNA Array I	Melanoma cDNA Array I	Ovarian Cancer cDNA Array I	Pancreatic Cancer cDNA Array I
Prostate Cancer cDNA Array I	Sarcoma cDNA Array I	Thyroid Cancer cDNA Array	Rat or Mouse Normal Tissue cDNA Array	Mouse Developmental cDNA Array	Drosophila Normal cDNA Array

### Pathology Report Summary Available For Most Products

**TissueFocus™ Search Tool** allows you to search over 30,000 total RNA, genomic DNA, protein lysates, FFPE and frozen sections from human tissue samples. Case-matched tumor and normal samples are available.

**Tissue total RNA and genomic DNA** Samples were derived from our high quality frozen tissues after rigorous QC testing. Agilent Bioanalyzer 28S/18S ratio, Electropherogram, A260/A280 ratio and PCR images available upon request. Samples are offered in 5 ug aliquots.

**Tissue Protein Lysate** Protein lysates were generated using a Modified RIPA buffer (no SDS) in the presence of protease and phosphatase inhibitors. Protein quantification is performed using the BCA Protein Assay. Samples are offered in 150 ug aliquots.

**Tissue Sections** Frozen and FFPE tissue sections can be used for applications such as IHC, ISH, LCM and RNA/DNA/Protein extractions. Each section is freshly cut onto a SuperFrost positively charged glass slide, and offered as a set of 5 slides (each 5 micron thickness).

**TissueFocus™ Block** available in formalin-fixed, paraffin embedded OR frozen, OCT-embedded formats