



The Ultra Specific Antibodies

Validated against > 10,000 Human Antigens

Confidence in your Antibody
Accuracy in your Results

 **ORIGENE**
www.origene.com

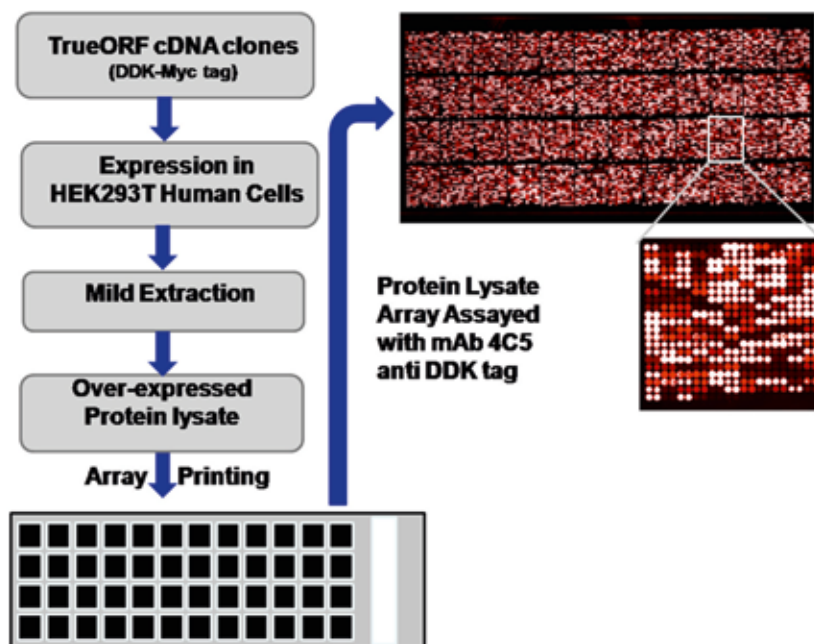
UltraMAB™, the Ultra Specific IHC Antibodies

Trust Your IHC Antibodies

High-specificity is the pre-requisite for any antibody used in diagnostic and therapeutic applications. Antibody cross-reactivity will create unexpected side effects or false diagnostic reports for clinicians. Research data from various groups have shown that some monoclonal antibodies on the market are not mono-specific. Similar epitopes are sometimes found across multiple unrelated proteins.

Antibody Validation Technology

Protein microarray technology can evaluate antibody specificity at the proteome-wide level. With the world's largest collection of overexpression antigen standards, OriGene developed a high density protein microarray chip for antibody validation. This protein chip is spotted with over 10,000 unique overexpression proteins in duplicate on a single nitrocellulose coated glass slide. OriGene's protein microarray technology has been used to validate the specificity of an existing ERCC1 diagnostic monoclonal antibody, and has been applied as a screening method to identify the most specific TrueMAB™ monoclonal antibody for ERCC1.



OriGene's overexpression lysate protein microarray chip comprises of over 22,000 spots. It includes over 10,000 unique protein lysates printed in duplicate and large selections of positive and negative controls. The array was manufactured as indicated and tested with 1:500 dilution of OriGene's anti-DDK (TA500011) tag antibody followed by dylight 649 conjugated goat anti-mouse IgG secondary antibody.

A More Specific ERCC1 Antibody for NSCL

The excision repair cross-complementation group 1 (ERCC1) protein is an important biomarker for clinicians to predict whether certain patient populations with non-small cell lung carcinoma (NSCLC) will respond to cisplatin chemotherapy. As such, it is critical to develop highly-specific immunohistochemistry validated monoclonal antibodies for this diagnostic test. Several publications reveal that 8F1, the most commonly used antibody clone for ERCC1, exhibits cross-reactivity to an unknown protein in ERCC1 deficient cell lines. By using OriGene's protein microarray technology, the corresponding cross-reactive binding protein for the 8F1 antibody was identified (Figure 1a). This technology also enabled OriGene to successfully develop the most specific UltraMAB™ monoclonal antibody for ERCC1 (clone 4F9) (Figure 1b). This data was further confirmed by western blot analysis (Figure 2) and in IHC by testing on an NSCLC tissue section (Figure 3).

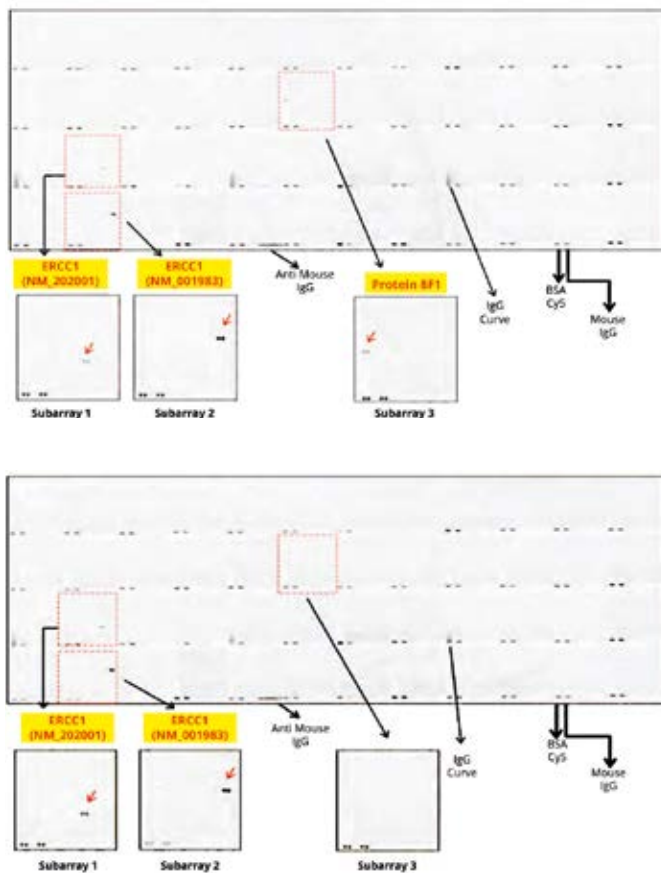


Figure 1. Specificity test results with OriGene's 10K protein microarray chip.

ERCC1 antibodies, 8F1 and UltraMAB 4F9, were used to immunostain a 10K protein microarray chip. 8F1 demonstrates recognition against two ERCC1 variants in subarrays 1 and 2 as well as a third protein in subarray 3, labeled as "Protein 8F1" (a). 4F9 specifically recognizes two ERCC1 variants in subarrays 1 and 2 with no additional proteins in subarray 3 (b)

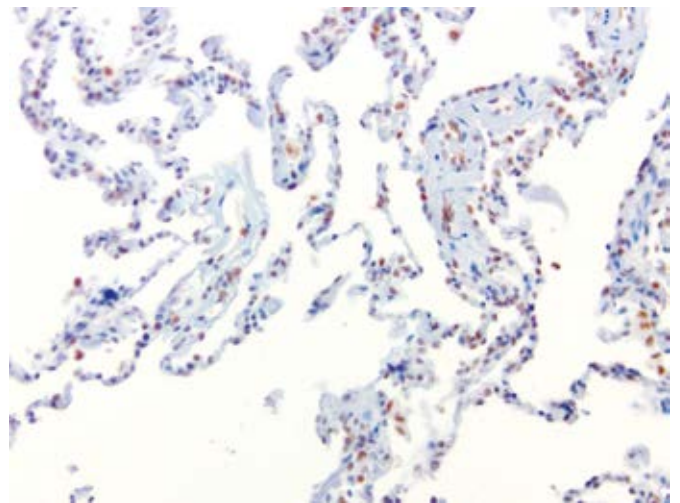


Figure 2. IHC staining of FFPE normal adjacent lung from tumor specimen using ERCC1 UltraMAB (clone 4F9, 1ug/ml).

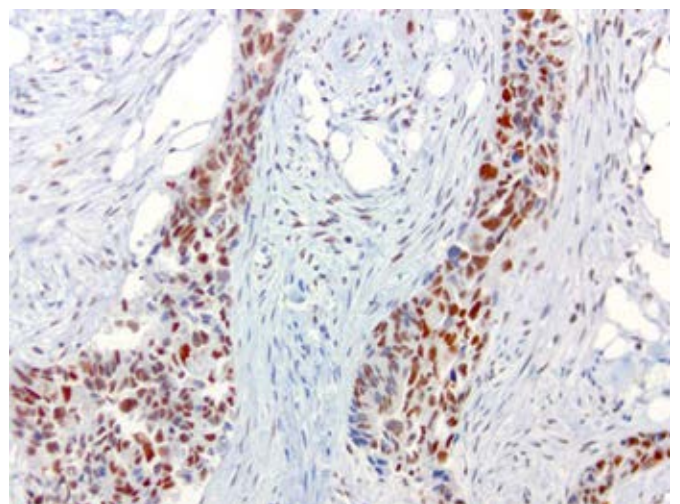


Figure 3. IHC staining of FFPE endometrial carcinoma using ERCC1 UltraMAB (clone 4F9, 1ug/ml).

Reference:

1. D. Ma, et al., Using protein microarray technology to screen anti-ERCC1 monoclonal antibodies for specificity and applications in pathology. BMC Biotechnology. 2012 Nov 21;12(1):88

A Better HER2 Antibody for Breast Cancer Diagnostics

Human epidermal growth factor receptor 2 (HER2, also known as ERBB2, CD340 or p185) is a member of the epidermal growth factor receptor (EGFR/ErbB) family. Amplification or over-expression of this gene has been shown to play an important role in the pathogenesis and progression of certain aggressive types of breast cancer and gastric cancer and it has evolved to become an important biomarker and target of therapy for the disease.

A semi-quantitative immunohistochemical assay using anti-HER2 antibody is applied to determine HER2 protein overexpression in breast cancer tissues. The specificity of the HER2 antibody (e.g. Clone 4B5) is critical because the test results will help oncologist decide a patient should receive Herceptin™ treatment. By using OriGene's high-density protein microarray, we have revealed that the antibody 4B5 is not specific to HER2 protein. As shown in Figure 1, this antibody also reacts with ZSCAN1B and HER4 (ERBB4). In contrast, HER2 UltraMAB (Clone UMAB36) developed by OriGene only recognizes HER2 protein and is thus specific. The performance of HER2 UltraMAB™ is also validated with IHC staining of breast cancer tissues (Figure 2).

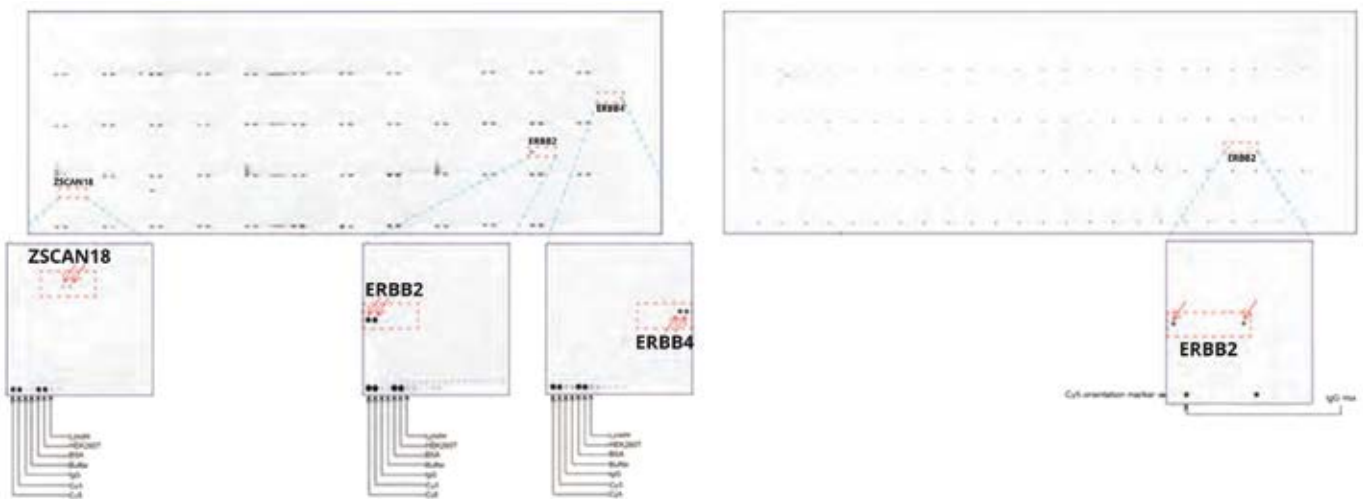


Figure 1. ERBB2 antibody specificity test results with OriGene's 10K protein microarray chip.

Antibody 4B5 (left) and OriGene's HER2 UltraMAB UM500036 (right). The commonly used diagnostic antibody 4B5 recognizes not only HER2 (ERBB2) protein, but also HER4 (ERBB4) and an unrelated protein ZSCAN18. OriGene's anti-HER2 UltraMAB recognizes only HER2 (ERBB2) protein.

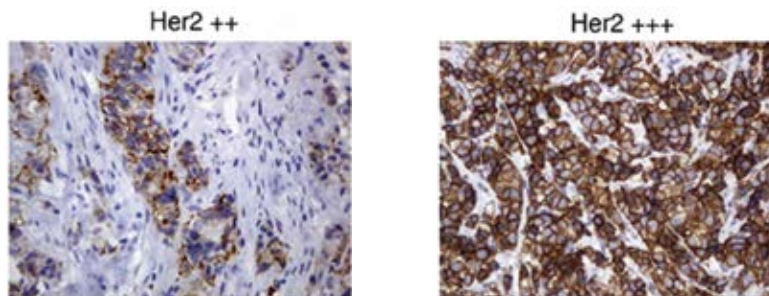
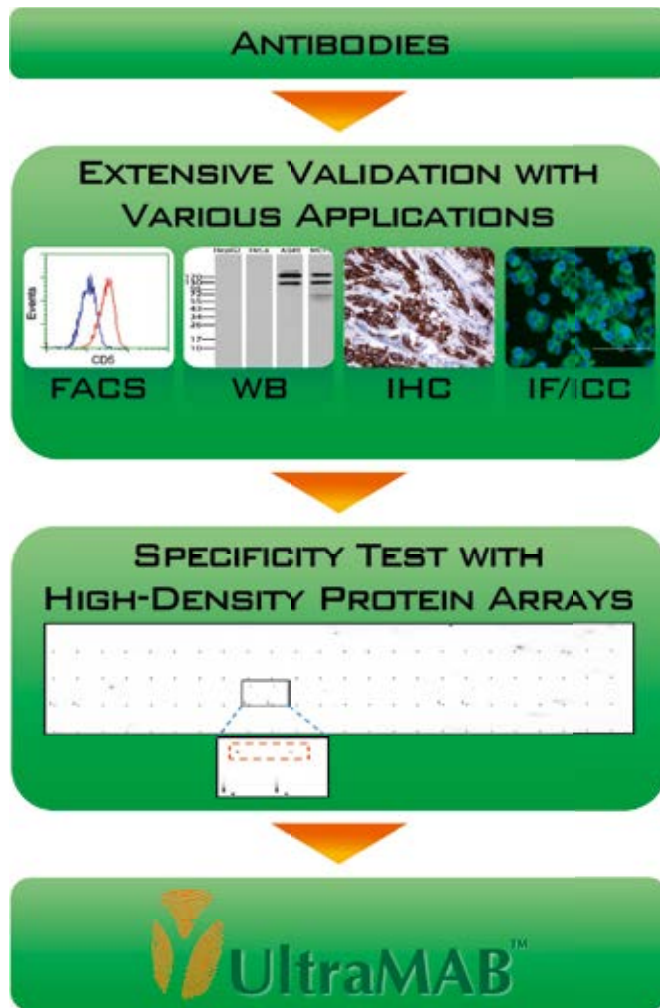


Figure 2. Immunohistochemical staining of paraffin-embedded Carcinoma of breast tissue (HER2+++), using anti-ERBB2 mouse monoclonal antibody. (Clone UMAB36, Dilution 1:100)

The Ultra Specific Antibody with Outstanding Performance

In addition to specificity, performance is also crucial to antibodies used for diagnostic and therapeutic applications. To ensure the superior performance, OriGene validates every UltraMAB™ monoclonal antibody according to the scientific findings and the medical records of related diseases. Major applications of validation include WB, IHC staining with over 25 types of normal and cancer human tissues, IF/ICC, and FACS

UltraMAB™ Development Flowchart



Selected UltraMAB™s Available

ALK	β-Catenin	CD19
CD20	CD68	CD80
Desmin	EGFR	EpCAM
ERCC1	ERG	GATA3
HE4	HER2	IDO1
JUN	Ki67	KRT20/CK20
LGR5	MET	MUC1/EMA
NCAM1/CD56	p53	PD1
PD-L2	TOP2A	Troponin

Interested? Try UltraMAB™ Today

View more targets on
www.origene.com/ultramab

OriGene, Your Partner in Research, Diagnostics and Beyond

- cDNA Clones/Lenti Particles
- CRISPR/Cas9/sgRNA
- Recombinant Proteins
- Antibodies
- RNAi
- Normal & Cancer Tissues



OriGene Headquarter
9620 Medical Center Drive
Suite 200
Rockville, MD, 20850
USA
+1.301.340.3188
www.origene.com

OriGene EU
Schillerstraße 5
32052 Herford
Germany
+49.5221.346060
www.origene.com

OriGene China
HuiLongSen International Science
& Technology Industry Park,
Build 11, No.99 Kechuang 14th Street
Beijing, China 101111
+86.10.59755312
www.origene.com.cn