

Luminex and ELISA validated purified Anti-Tag mouse monoclonal antibody (clone 1B12), detection
Catalog: TA700050
Product Data Sheet

Reactivity: Human
 Tested Application: ELISA, Luminex
 Clone Name: 1B12

Guaranteed Applications: Luminex, ELISA

Matched Antibodies: OriGene mouse monoclonal antibodies

Immunogen: Full length tagged human recombinant proteins produced in HEK293T cells.

Components:

Luminex and ELISA validated purified Anti-Tag mouse monoclonal antibody (clone 1B12), capture (TA600050)

Amount:

100ug

Concentration: 0.5 mg/ml

Storage Condition: Shipped at 4C. Upon delivery store at -20C. Stable for 12 months from date of receipt. Avoid repeated freeze-thaws.

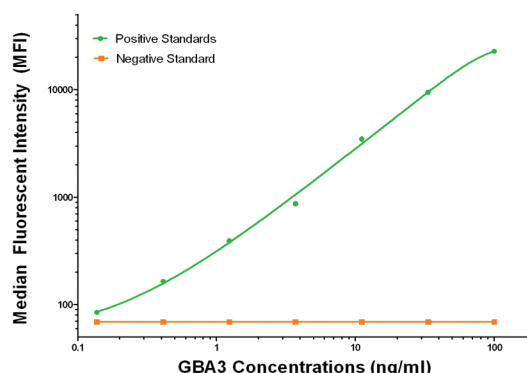
Buffer: Stored in PBS (pH 7.4) containing 0.05% sodium azide 10mg/ml BSA, 50% glycerol

Protein Standard: OriGene full-length human proteins

Background:

Validation Data:

Luminex



Luminex with GBA3 1F1 Capture (TA600144) and 1B12 Detection (TA700050) Antibodies

Related Products:

TrueORF cDNA clones
 VERIFY Tagged Antigen lysates
 Purified Proteins
 ELISA and Luminex Kits
 Assay Reagents

* ELISA and Luminex assay development protocols are available online
www.origene.com/assets/documents/Assays/ELISA_Luminex_Development_Guide.pdf
 * For custom assay development services contact assays@origene.com