

Luminex and ELISA validated purified Anti-Tag mouse monoclonal antibody (clone 1B12), capture

Catalog: TA600050

Product Data Sheet

Reactivity: Human
 Tested Application: ELISA, Luminex
 Clone Name: 1B12

Guaranteed Applications: Luminex, ELISA

Matched Antibodies: OriGene mouse monoclonal antibodies

Immunogen: Full length tagged human recombinant proteins produced in HEK293T cells.

Components:

Luminex and ELISA validated purified Anti-Tag mouse monoclonal antibody (clone 1B12), capture (TA600050)

Amount:

100ug

Concentration: 0.5 mg/ml

Storage Condition: Shipped at 4C. Upon delivery store at -20C. Stable for 12 months from date of receipt.
 Avoid repeated freeze-thaws.

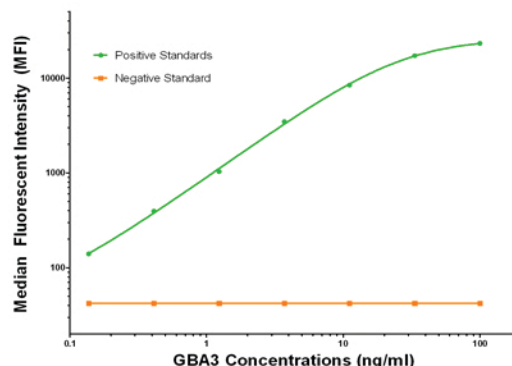
Buffer: Stored in PBS (pH 7.4) containing 0.05% sodium azide and up to 5% trehalose

Protein Standard: OriGene full-length human proteins

Background:

Validation Data:

Luminex



Luminex with 1B12 Capture (TA600050) and GBA3 4F10 Detection (TA700134) Antibodies

Related Products:

TrueORF cDNA clones
 VERIFY Tagged Antigen lysates
 Purified Proteins
 ELISA and Luminex Kits
 Assay Reagents

* ELISA and Luminex assay development protocols are available online
www.origene.com/assets/documents/Assays/ELISA_Luminex_Development_Guide.pdf
 * For custom assay development services contact assays@origene.com