

Over-Expression Cell Lysates

20,000+ human Proteins as Over-expression Lysates

Validated Positive control for Western Blot, ELISA

Over-expression cell lysates are whole-cell lysates of HEK293T cells over-expressing a target protein where the expression of the target protein is confirmed by western blot.

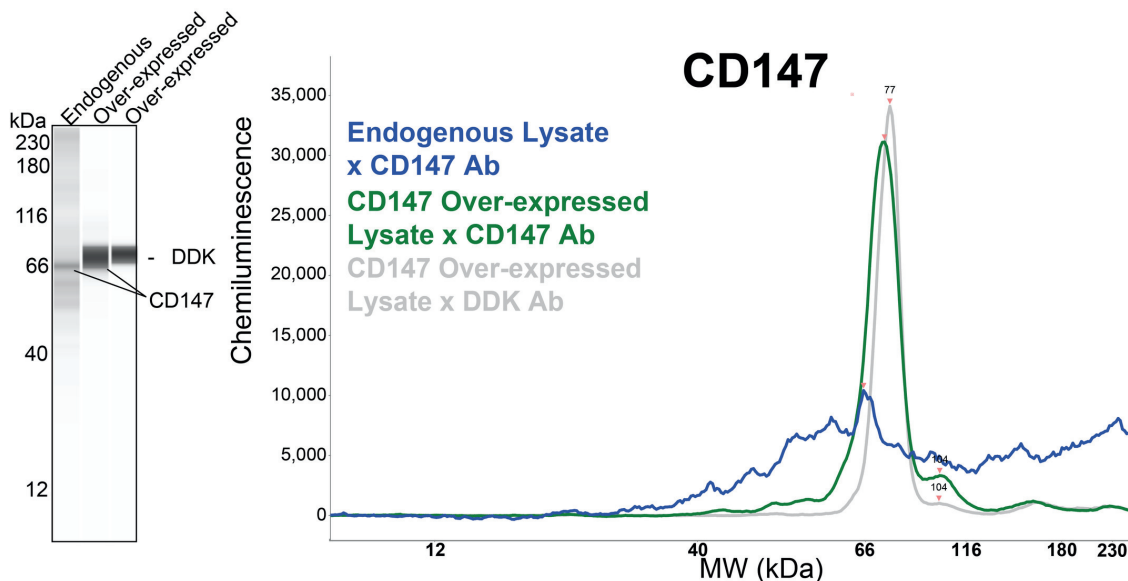
Features

- ✓ Comprehensive library of 20K over-expression lysates covering 80% of the human proteome; includes negative controls
- ✓ HEK293T cell expressed, preserving native protein structure
- ✓ C-terminal Myc-DDK tag for easy detection and isolation
- ✓ In RIPA buffer with no SDS to best preserve protein activity

Applications

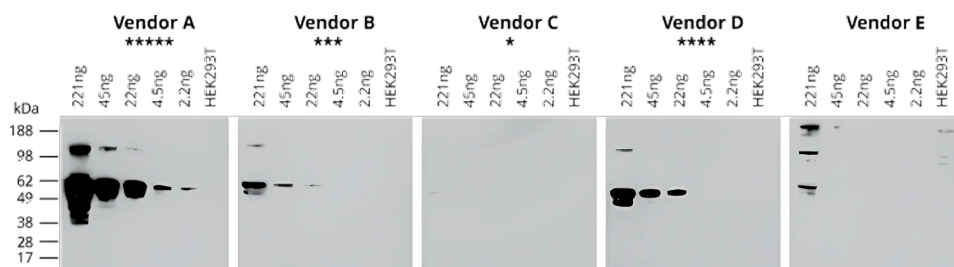
- ✓ Protein purification
- ✓ Standards for ELISA and Western Blots
- ✓ Protein-protein interactions
- ✓ Antibody validation via WB, IP, and more...
- ✓ Reverse phase protein arrays

Application Data #1: Controls for Automated Simple Western™ System



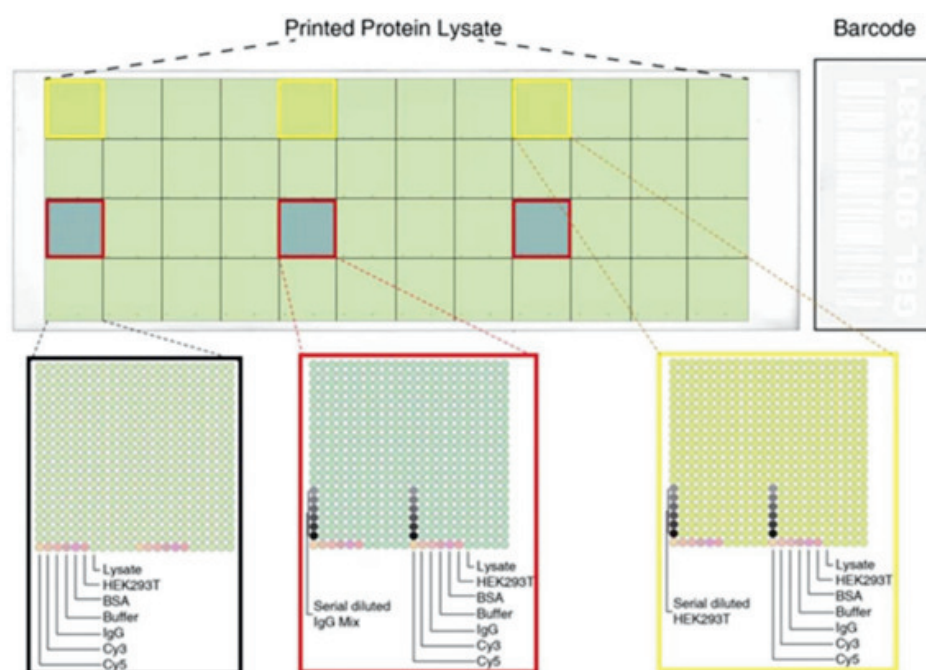
CD147 Over-expression lysate (LY403688) was used as a control in the Simple Western system to validate the anti-CD147 mouse mAB (TA501212). Electrophoretogram view (right) plots chemiluminescence by molecular weight along the capillary at 1:10 dilution of primary antibody showing enriched CD147 in over-expression lysate (**green**) compares to the endogenous lysate from HEK293T cells (**blue**) and CD147 over-expression lysate detected by anti-DDK tag antibody (TA592569) (**grey**).

Application Data #2: Antibody Validation



Five commercial antibodies against human P53 evaluated in Western blot experiments with P53 over-expression cell lysate. P53 protein level in cell lysate was pre-determined using a purified GST-Myc-DDK standard. Lysate was serially diluted before SDS-PAGE and immunoblotting. Antibody quality and star rating is based on P53 protein detection level.

Application Data #3: Protein Arrays Made from Over-expression Lysates



OriGene's high-density protein array is made with more than 10,000 unique over-expression lysates, printed in duplicate, with controls. Such protein arrays can be used in antibody specificity validation, protein-protein interaction, and auto-antibody profiling.

Customer Testimonial

"The Human Protein Atlas project adopted OriGene over-expression lysates and significantly increased our polyclonal antibody Western blot success rate. We are very happy with the results."

- Prof Mathias Uhlen, Royal Institute of Technology (KTH), Stockholm, Sweden

Visit our website to learn more about over-expression lysates



OriGene Headquarters
9620 Medical Center Dr
Rockville, MD 20850
+1-301-340-3188
custsupport@origene.co
techsupport@origene.co
sales@origene.com

OriGene EU
SchillerstraBe 5
32052 Herford, Germany
+49-5221-346060-0
info-de@origene.com

www.origene.com

ORIGENE
EMPOWER YOUR RESEARCH